

# Table of Contents

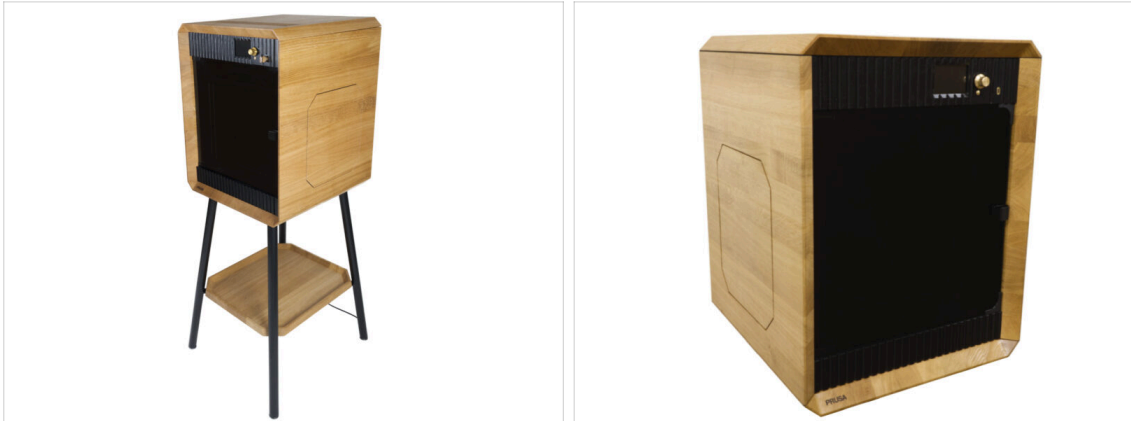
<b>1. Introduction</b>	3
Step 1 - Introduction	4
Step 2 - Navigating through the manual	4
Step 3 - View high resolution images	5
Step 4 - Tools included in the package	5
Step 5 - Additional accessories	6
Step 6 - Additional information	6
<b>2. Unpacking the printer</b>	7
Step 1 - Opening the main box	8
Step 2 - Accessing the printer	8
Step 3 - Removing the padding	9
Step 4 - Unpacking the printer	9
Step 5 - Contents of the accessories box	10
Step 6 - Attaching the tool organizers	10
Step 7 - Removing the door tabs	11
<b>3. First run</b>	12
Step 1 - Firmware update	13
Step 2 - Turning the printer ON	13
Step 3 - Printer setup	14
Step 4 - Network setup	14
Step 5 - Door sensor calibration	15
Step 6 - Handbook	15
Step 7 - Give us feedback	16
Step 8 - Prusa Cheatsheet	16
Step 9 - Prusa knowledge base	17
Step 10 - Join Printables!	17
Step 11 - Well done!	18



# 1. Introduction

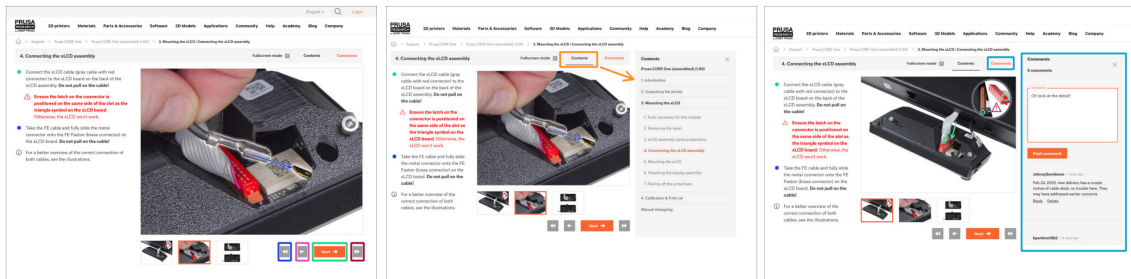


## STEP 1 Introduction



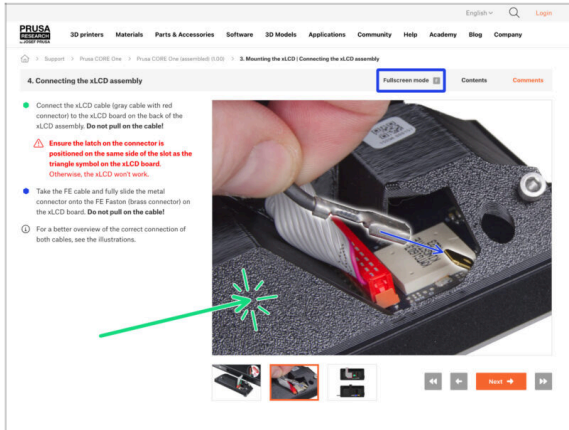
- 🛡️ Welcome to the guide for unboxing and setting up your **Prusa Signature Oak**. Follow these steps to ensure your printer is ready for its first print.
- 📄 Although the Prusa Signature Oak comes preassembled, there are a few steps that need to be taken before you can start printing.
- 📌 **We strongly recommend keeping all the packaging material in case you decide to send the printer for service.**
- 🛡️ This guide will show you the unpacking process of both versions of the PRUSA Signature Oak printer (with and without legs).

## STEP 2 Navigating through the manual



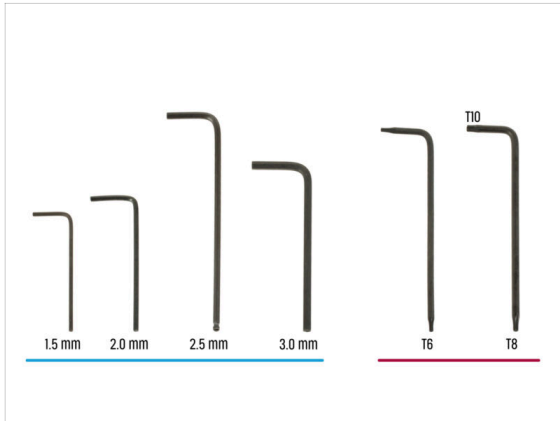
- 🛡️ Use the graphical navigation buttons in the bottom right corner or the arrow keys on your keyboard:
- 👉 **Next button / Right arrow key** - Moves to the next image, or to the next step if it's the last image in the step.
- 👈 **Left arrow button / Left arrow key** - Moves to the previous image, or to the previous step if it's the first image in the step.
- ⏮ **Play backward button / Up arrow key** - Moves to the previous step.
- ⏭ **Play forward (Next) button / Down arrow key** - Moves to the next step.
- 📄 Click on **Contents** to expand the full list of steps in this guide. This allows you to jump to any step.
- 💬 Click on **Comments** to open the discussion for a specific step and leave your feedback.

## STEP 3 View high resolution images



- ◆ When you browse the guide on [help.prusa3d.com](https://help.prusa3d.com), you can view the original images in higher resolution for clarity.
- ◆ Click on the image to open it in higher resolution for a detailed view.
- ◆ Click on **Fullscreen mode** or press the F key to maximize your screen and focus entirely on the instructions.

## STEP 4 Tools included in the package



- ◆ Your Prusa Signature Oak package includes all the tools for printer operation and maintenance:
  - ◆ Phillips (PH2) screwdriver (1x)
  - ◆ Needle-nose pliers (1x)
  - ◆ Wrench size 13 mm (1x)
  - ◆ Universal wrench (1x)
  - ◆ Allen key set 1.5 mm - 3.0 mm
  - ◆ Torx key set T6 - T10

i The tools are packed in the accessories box.

## STEP 5 Additional accessories



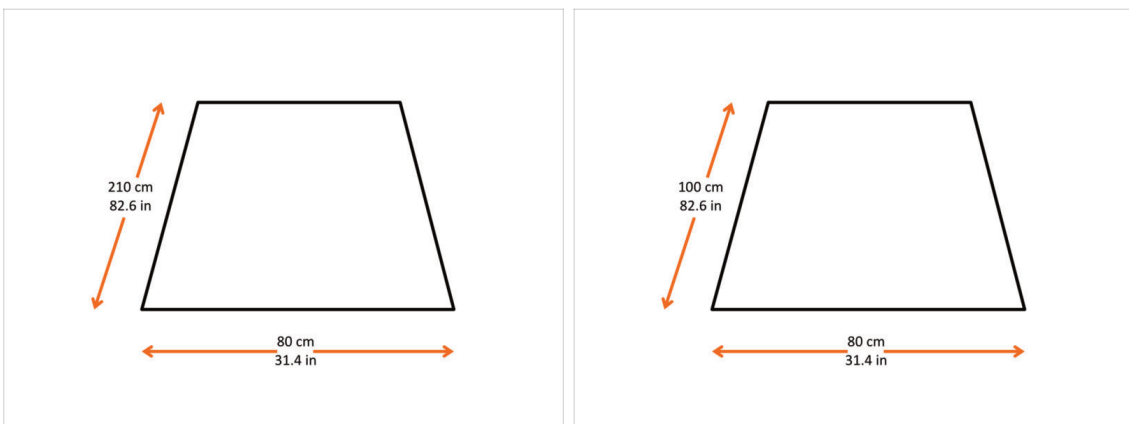
● The Nozzle service & expansion kit bag contains:

- 4mm hex access key
- Nozzle brush
- Nozzle cleaning tool
- Prusa nozzles (4x)

📌 The additional nozzle diameters are: 0.25 mm, 0.4 mm (hardened nozzle), 0.6 mm, and 0.8 mm

ⓘ The Nozzle service & expansion kit is packed in the accessories box.

## STEP 6 Additional information



⚠️ **CAUTION: The package is bulky and heavy - handle with care and never try to move the box by yourself!**

● Make sure you have enough space to set the printer up. **A clean space is essential.**

ⓘ A minimum of 210 x 80 centimeters (82.6 x 31.4 inches) is recommended for the **printer with legs**.

ⓘ A minimum of 100 x 80 centimeters (39.4 x 31.4 inches) is recommended for the **printer without legs**.

## 2. Unpacking the printer



### STEP 1 Opening the main box



**i** The unpacking process for the version with no legs is very similar. Follow this guide for both printer versions.

**⚠ CAUTION: The package is bulky and heavy. Never move the box on your own! Handle with care!**

● The package fixations and foam inserts may vary slightly.

**i** Cut the transport safety straps.

● Lift the lid off the box.

● Ensure that there is sufficient free space on the outside of the box, near the feet. The printer will be placed there from the box later.

### STEP 2 Accessing the printer



● Remove the middle section of the box.

**i** The plastic film is not taped together and can be easily opened. No need for scissors or any sharp tools.

● Pull the plastic film down on all sides.

● Remove the two graphic inserts.

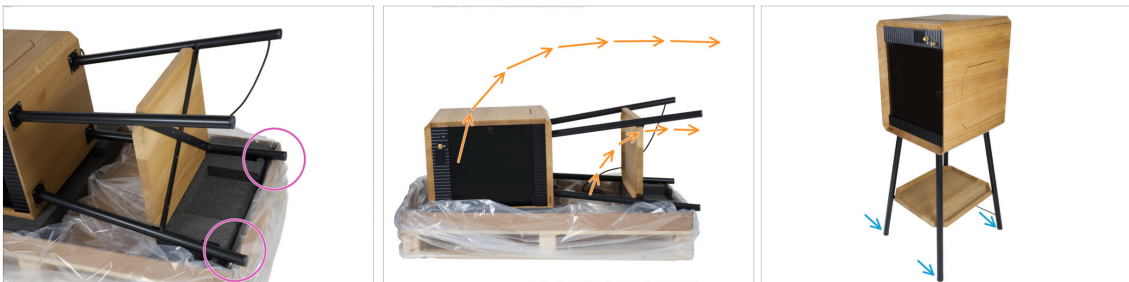
● Remove the wood care and repair kit.

### STEP 3 Removing the padding



- ◆ Remove the bottom foam padding.
- ◆ Remove the box with accessories.
- ◆ Remove the box with the USB drive, the documentation, and all three print sheets from the top.
- ⓘ Documentation for this printer contains: Welcome letter, artbook, handbook, and regular cleaning manual.
- ◆ Remove the top foam padding.

### STEP 4 Unpacking the printer



- ◆ Lift the legs up from the foam casing and move the printer so the legs are sticking out over the side of the box.
- ◆ Carefully lift the top part of the printer. **Ensure that the printer's legs touch the floor.** Proceed to tip the printer over until the printer stands on its own.
- ◆ Make sure that the printer is on a flat surface.
- ◆ The pegs at the bottom of the feet are adjustable. Turn the lower part of the peg to adjust its height.

## STEP 5 Contents of the accessories box



- The accessories box contains:
  - Tools bag
  - Nozzle service & expansion kit bag
  - Side Door Organizer Inserts bag
  - Prusament box (3x)
  - Accelerometer

## STEP 6 Attaching the tool organizers



- Gently push the side door in to open it.
  - Slide the additional print sheets into the two ridges in the side door panel.
  - Insert the tools and accessories into each tool organizer as shown in the photo.
    - Hotend assembly (not included with the printer), needle-nose pliers, Allen keys, and nozzles.
    - Phillips screwdriver, wrench size 13 mm, and the universal wrench.
    - Nozzle brush.
- i** For clarity, we are showing the tools inserted in the organizers outside of the printer.

## STEP 7 Removing the door tabs

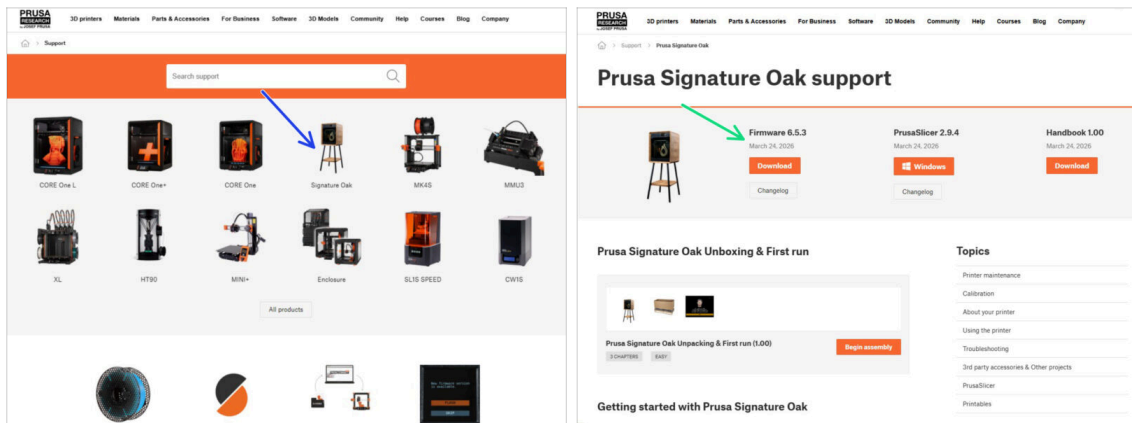


- ◆ The doors are secured with two printed tabs. Remove these before opening the door.

### 3. First run



## STEP 1 Firmware update



- i All printers are shipped with the latest firmware. However, it is recommended to check and possibly upgrade the firmware version.
- Visit the [help.prusa3d.com](https://help.prusa3d.com) page.
- Navigate to the Prusa Signature Oak page.
- Save the firmware file (*.bbf*) onto the USB-C drive.
- i Pro tip: To access the Prusa Signature Oak homepage, you can use the URL: [prusa.io/signature-oak](https://prusa.io/signature-oak)

## STEP 2 Turning the printer ON



- Insert the USB drive included in your kit into your printer.
- i The included USB drive contains the latest firmware file.
- On the back of the printer, connect the power cable and plug the printer into a wall outlet.
- Turn the printer on (symbol "I") using the switch on the back.
- i The printer will now detect if a new firmware file is available on the USB drive.
- If the "New firmware available" screen appears, hit **FLASH** by pressing the rotary knob to upgrade to the latest firmware.
- If no such message appears, the printer is running the latest firmware already. Proceed to the next step.

## STEP 3 Printer setup



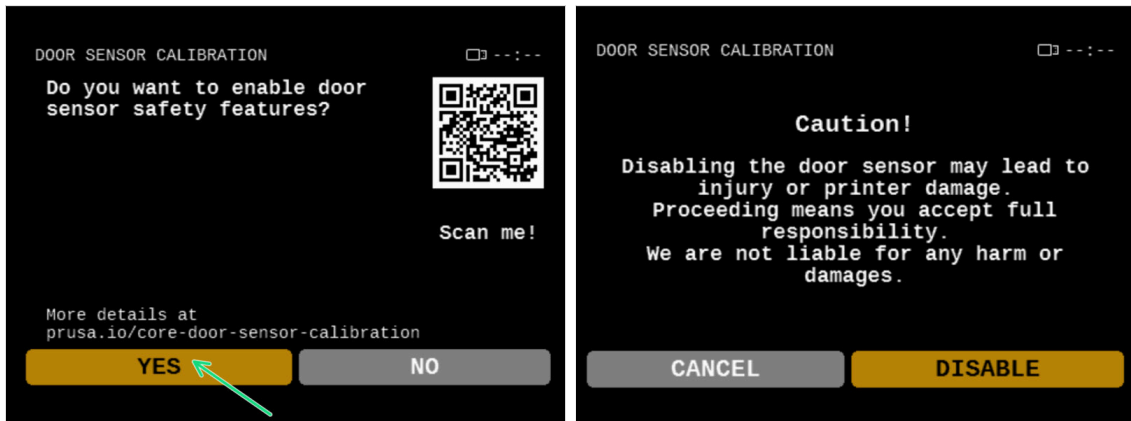
- ◆ Once the printer is on, select your language. Use the control knob or touchscreen to set your preference.
- ◆ After selecting your language, the printer will display the welcome screen. Hit **OK** to continue through the setup process.
- ◆ The next screen will prompt you to select your printer model and other settings. All of these are pre-configured from the factory. Hit **Done** to continue.
- ⓘ The printer was configured and thoroughly tested at our facility. Once you select **Done**, the printer will only ask you if you want to set up the network and the door sensor.

## STEP 4 Network setup



- ◆ The Network Setup screen will ask you to connect to a Wi-Fi network using our official Prusa mobile app.
- ⓘ Read more on [prusa.io/app](https://prusa.io/app).
- ◆ If you select **No**, the printer will show alternative ways to connect to Wi-Fi. This step is optional and can be done later.
- ⓘ You can skip this screen and set up the network connection later.

## STEP 5 Door sensor calibration



- The printer will prompt you to enable the optional door sensor safety feature.
- ① We recommend that you enable this function. However, it is optional, and you can activate or disable it at any point.
  - When you select YES, follow the on-screen instructions to make sure that the door sensor is calibrated.
  - When you select NO, the caution screen appears, informing you of the risks of disabling the door sensor safety feature.

## STEP 6 Handbook



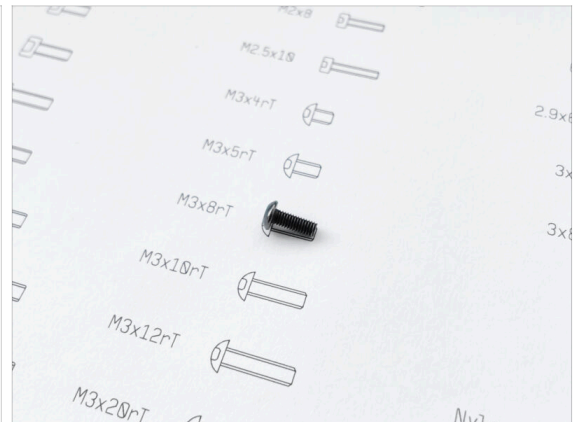
- Read the **3D Printing Handbook** dedicated to your printer and follow the instructions to set up the printer and prepare it for your first print.
- 📌 The latest version is always available at [prusa.io/core-one-plus](https://prusa.io/core-one-plus).  
xxx **UPDATE THE LINK** xxx
- ⚠️ **Read the Disclaimer and Safety instructions chapters.**

## STEP 7 Give us feedback



- We know you are eager to start printing, but we would really appreciate it if you could take 3–4 minutes to **share your thoughts** on this manual: how clear it was, how easy it was to follow, and any ideas for improvement.
- ⓘ This feedback is a little different from the usual comments you might leave on individual steps.
- **Share your feedback here.**
- Thank you for helping us make our manuals even better!

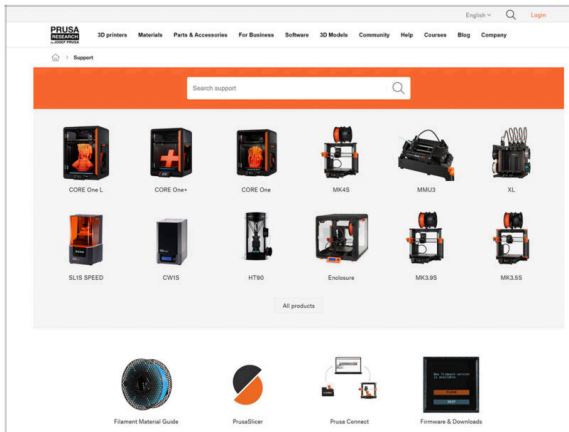
## STEP 8 Prusa Cheatsheet



You can download the cheatsheet on [prusa.io/col-cheatsheet](https://prusa.io/col-cheatsheet).

- Our cheatsheet will help you every time you are not sure if you are using the correct tool type or size. Place the fastener on the corresponding print to compare its type and size.
- Print the cheatsheet at a 1:1 scale.
- ⓘ This guide does not involve screws or nuts. However, the cheatsheet will be useful for future maintenance.

## STEP 9 Prusa knowledge base

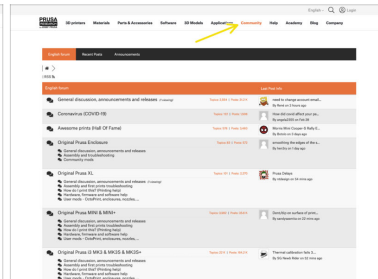
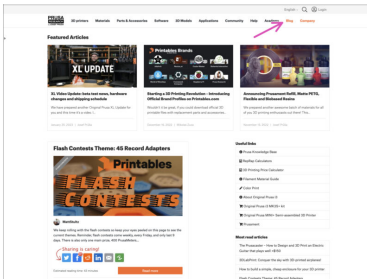
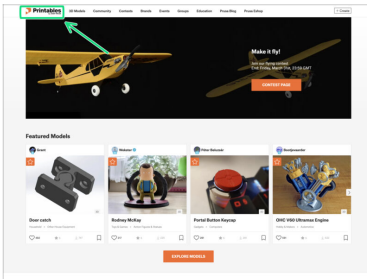



If you encounter any problems at all, do not forget you can always check out our knowledge base at [help.prusa3d.com](https://help.prusa3d.com)



We are adding new topics every day!

## STEP 10 Join Printables!



- Do not forget to join the biggest Prusa community! Download the latest models in STL or G-code tailored for your printer. Register at [Printables.com](https://printables.com)
- Looking for inspiration on new projects? Check our blog for weekly updates.
- If you need help with the build, check out our forum with a great community :-)
-  All Prusa services share one user account.

---

**STEP 11** Well done!



- ◆ Congratulations! Your Prusa Signature Oak setup is complete.
- ◆ Happy printing!











