

Table of Contents

1. Introduction	3
Step 1 - Introduction	4
Step 2 - How to navigate through the manual	4
Step 3 - View high resolution images	5
Step 4 - Tools included in the package	5
Step 5 - Prusa Cheatsheet	6
Step 6 - View high-resolution images	6
Step 7 - Let's get everything set up!	7
2. Unpacking the printer	8
Step 1 - Preparing the package	9
Step 2 - Removing the box	9
Step 3 - Removing the cardboard layer	10
Step 4 - Anti-vibration bar: parts preparation	10
Step 5 - Sticking the anti-vibration bar	11
Step 6 - Removing the inside protections	11
Step 7 - Preparing the Tool pack	12
3. Mounting the xLCD	13
Step 1 - Tools necessary for this chapter	14
Step 2 - Removing the bezel	14
Step 3 - xLCD assembly: parts preparation	15
Step 4 - Connecting the xLCD assembly	15
Step 5 - Mounting the xLCD	16
Step 6 - Attaching the display assembly	17
Step 7 - Peeling off the protectives	17
4. Calibration & First run	18
Step 1 - Attaching the print sheet	19
Step 2 - Turning it ON	19
Step 3 - Setting up the printer: Intro	20
Step 4 - Setting up the printer: Network setup	20
Step 5 - Wizard: Intro	21
Step 6 - Wizard: Loadcell Test	22
Step 7 - Wizard: Gearbox Alignment	22
Step 8 - Wizard - Filament Sensor Calibration	23
Step 9 - Wizard complete	23
Step 10 - Handbook	24
Step 11 - Firmware update	24
Step 12 - Prusa knowledge base	25
Step 13 - Join Printables!	25
Manual changelog	26
Step 1 - Version history	27

1. Introduction

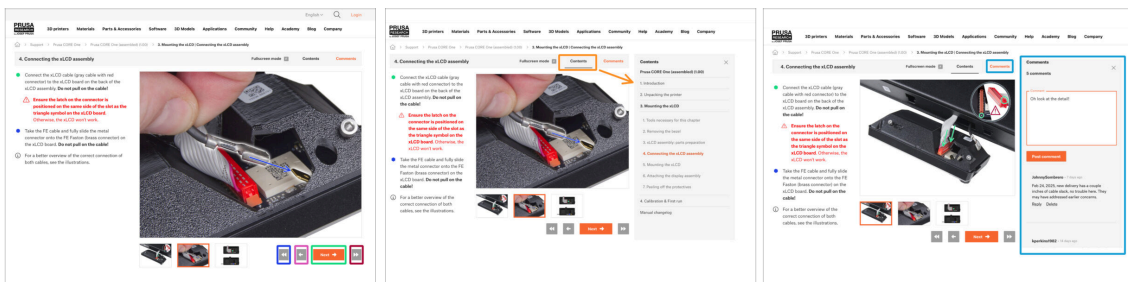


STEP 1 Introduction



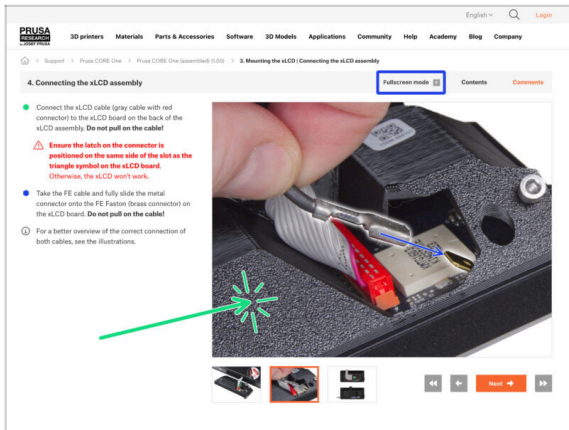
- Welcome to the guide for unboxing, calibrating, and setting up your **Prusa CORE One**. Follow these steps to ensure your printer is ready for its first print.
- Although the Prusa CORE One comes pre-assembled, the LCD must be installed before printing, as it is removed for transport protection.
- Do not install the LCD at this moment; wait for the appropriate instructions later in the guide.**

STEP 2 How to navigate through the manual



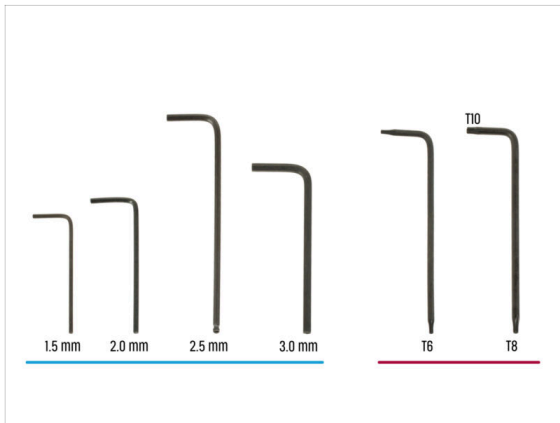
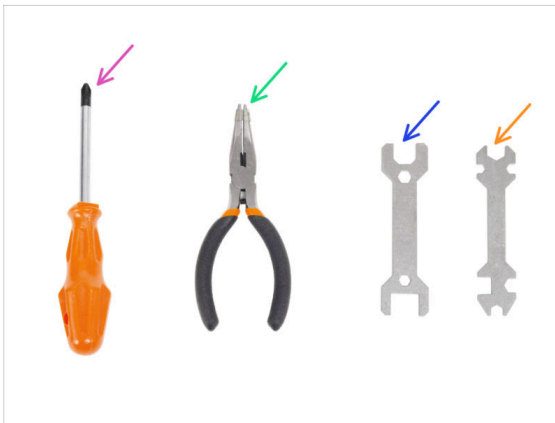
- Use the graphical navigation buttons in the bottom right corner or the arrow keys on your keyboard:
 - Next button / Right arrow key** - Moves to the next image, or to the next step if it's the last image in the step.
 - Left arrow button / Left arrow key** - Moves to the previous image, or to the previous step if it's the first image in the step.
 - Play backward button / Up arrow key** - Moves to the previous step.
 - Play forward (Next) button / Down arrow key** - Moves to the next step.
 - Click on **Contents** to expand the full list of steps in this guide. This allows you to jump to any step regardless of the sequence.
 - Click on **Comments** to open the discussion for a specific step and leave your feedback.

STEP 3 View high resolution images



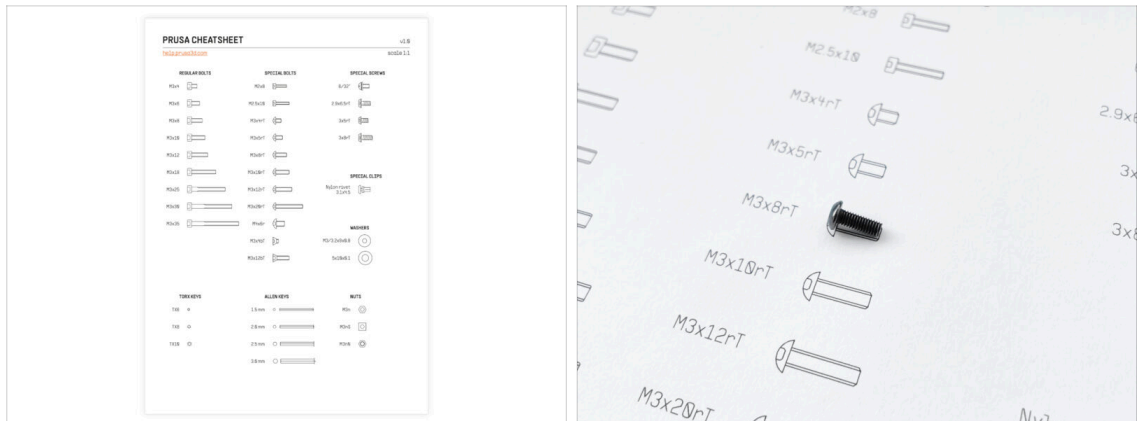
- When you browse the guide on help.prusa3d.com, you can view the original images in high resolution for clarity.
- Just click on the image to open it in high resolution for a detailed view.
- Click on **Fullscreen mode** or press the F key to maximize your screen space and focus entirely on the instructions.

STEP 4 Tools included in the package



- Your Prusa CORE One package includes all the tools for printer operation and maintenance:
 - Phillips (PH2) screwdriver (1x)
 - Needle-nose pliers (1x)
 - Wrench size 13 mm (1x)
 - Universal wrench (1x)
 - Allen key set 1.5 mm - 3.0 mm
 - Torx key set T6 - T10
- You will come across the tool pack during unpacking the printer, we will let you know.
- i For this guide, you will only need the 2.5 mm Allen key.

STEP 5 Prusa Cheatsheet



- If you're unsure whether you're using the correct screw type or size, our cheatsheet will help you. Print it at a 1:1 scale and place the fastener on the corresponding drawing to compare its type and size.

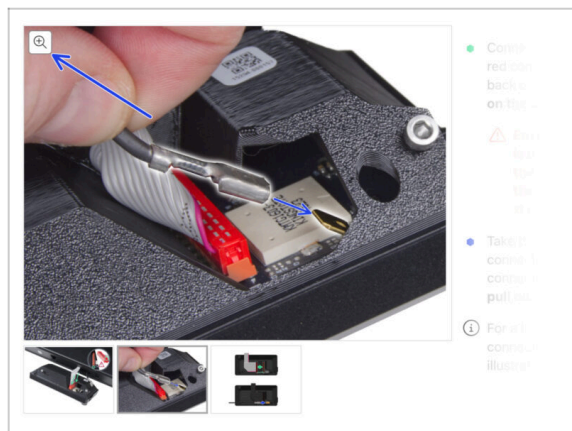


You can download the cheatsheet on prusa.io/core-one-cheatsheet.



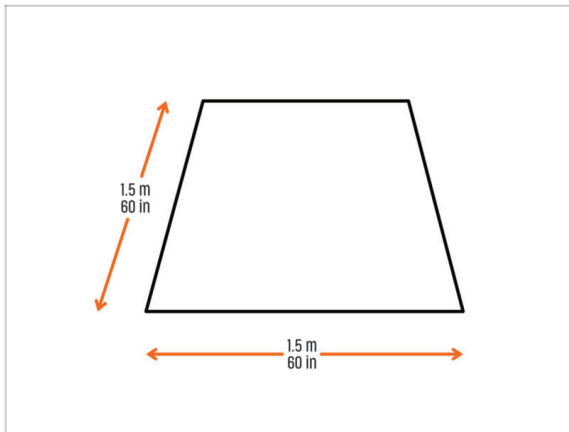
This guide doesn't involve screws or nuts, but this option may be useful for future maintenance.

STEP 6 View high-resolution images



- When you browse the guide on help.prusa3d.com, you can view the original images in high-resolution for clarity.
- Just hover your cursor over the image and click the Magnifier button ("View original") in the top left corner.

STEP 7 Let's get everything set up!



CAUTION: The package is heavy—handle it with care!

- Make sure you have enough space to prepare the printer. **A clean space is essential.**
- ① A minimum of 1.5 x 1.5 meters (60 x 60 inches) is recommended.
- Bring your family, friends, or pets—this will be engaging!
- Continue to the next chapter: **2. Unpacking the printer.**


2. Unpacking the printer



STEP 1 Preparing the package



 **CAUTION: The package is heavy—handle it with care!**

 **The package fixations and foam inserts may vary.**

- Open the package. On the top layer, you will find:
 - Print sheet
 - USB drive
 - Power cord
 - Anti-vibration bars
- Remove these items from the package and place them in a safe spot for later use.
- Remove the cardboard protection layer.
- Take out the Prusament cardboard box and set it aside.


STEP 2 Removing the box



- Remove top foam fixation.
- Notice the two cutouts (handles) on both sides of the cardboard layer. Bend them downward.

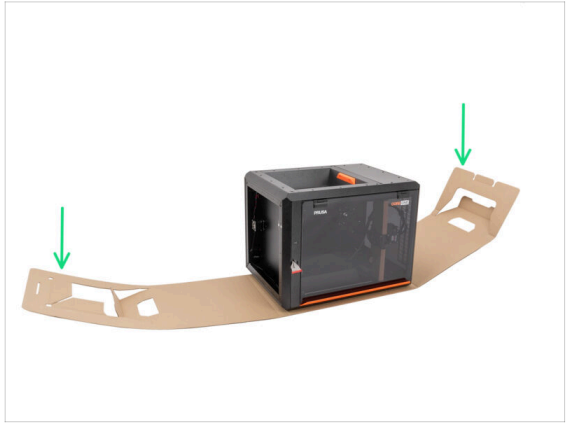
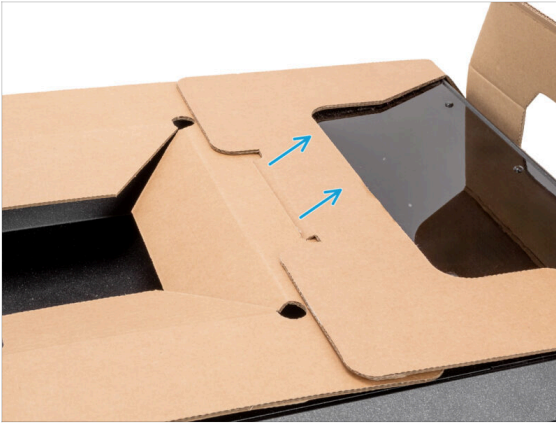
 **CAUTION: The printer is heavy—handle it with care!**

- Grasp both handles and **CAREFULLY** lift the printer out of the box.

 **Tip:** Ask someone to hold the bottom cardboard box in place to make it easier to lift the printer out.

- Place the printer on a **stable and clean surface**.

STEP 3 Removing the cardboard layer



- Detach the two ends of the cardboard protective layer from each other by pulling the upper layer out.
- Fold down the cardboard protective layer away from the printer.

STEP 4 Anti-vibration bar: parts preparation



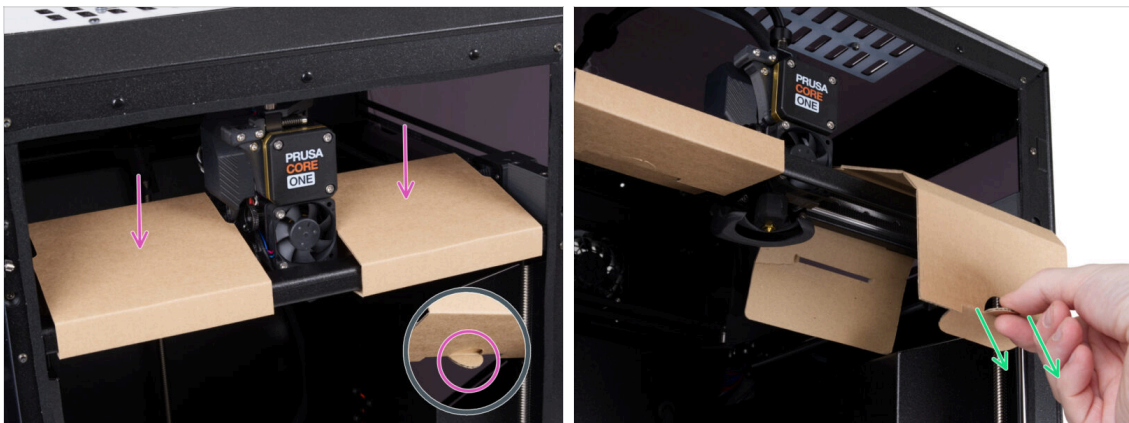
- **For the next step, please prepare:**
- Anti-vibration bar (2x)

STEP 5 Sticking the anti-vibration bar



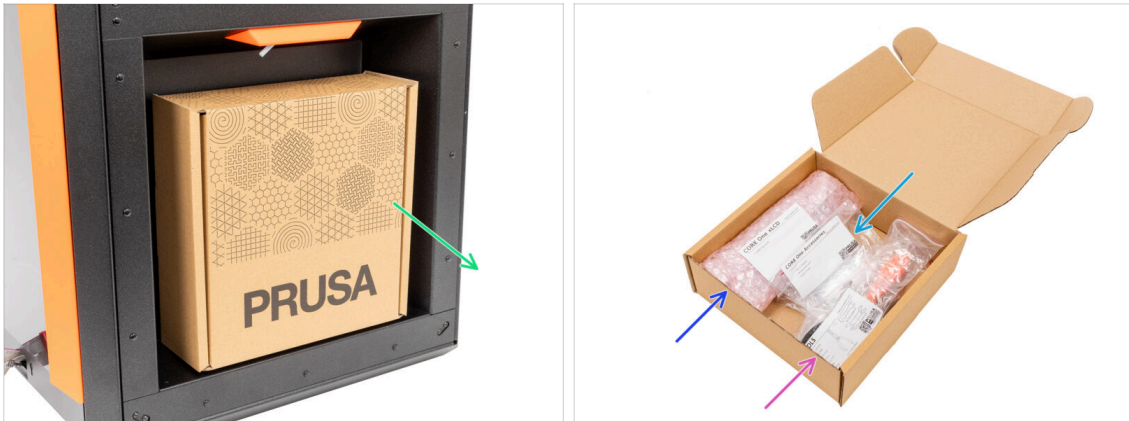
- Remove the protective film from both anti-vibration bars.
- Stick the anti-vibration bars on the underside of the profiles.
- Carefully turn the printer to its "natural standing position" with the orange door handle on the right side.
- Now, you can completely remove the cardboard layer from the printer.

STEP 6 Removing the inside protections



- Open the door.
- Locate two cardboard fixations on the X-axis. There is a notch on the underside that releases the fixation.
- Pull the notch, release, and remove the fixation.
- Using the same method, remove the second fixation.

STEP 7 Preparing the Tool pack

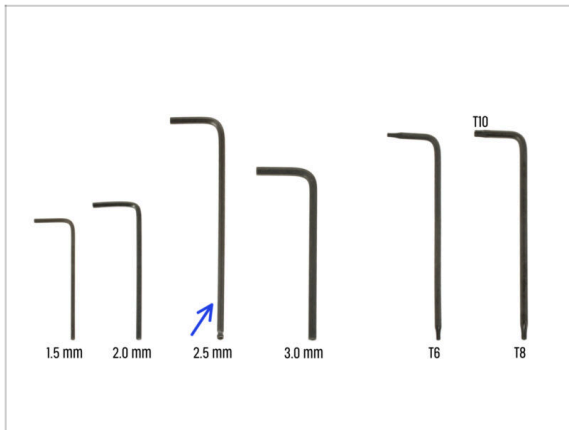


- The tool pack is located on the right side of the printer.
- Remove the cardboard tool pack from the printer.
- Open the tool pack completely. **Inside, you will find:**
 - xLCD assembly package
 - Accessories
 - Tools package - contents are described in the first chapter
- Keep the content aside for later use. Now let's go to the next chapter: **3. Mounting the xLCD**

3. Mounting the xLCD



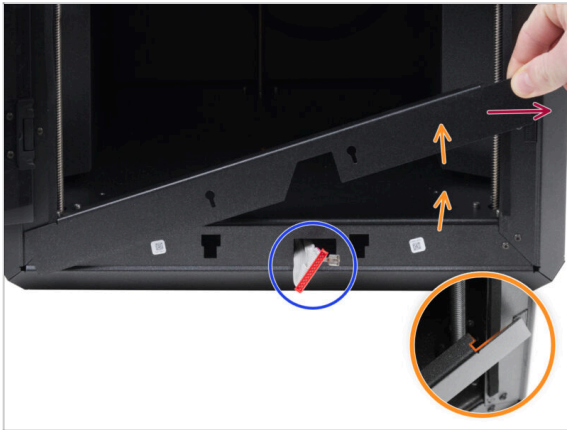
STEP 1 Tools necessary for this chapter



For this chapter, please prepare:

2.5mm Allen key

STEP 2 Removing the bezel



Open the door fully.

Lift the right end of the front bezel and unhook it from the printer frame.

Pull the bezel out of the printer. Do not discard the part.

⚠ Proceed carefully to avoid scratching the parts or damaging the door.

i The bezel is attached to the printer with magnets, making it easy to remove.

Note the cables coming from the printer. We'll address them shortly. **Avoid pushing them into the printer, keep them as they are.**

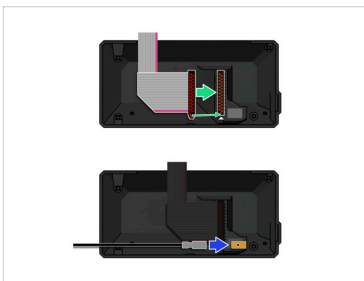
STEP 3 xLCD assembly: parts preparation



● For the following steps, please prepare:

- xLCD assembly (1x)

STEP 4 Connecting the xLCD assembly



- Connect the xLCD cable (gray cable with red connector) to the xLCD board on the back of the xLCD assembly. **Do not pull on the cable!**

⚠ **Ensure the latch on the connector is positioned on the same side of the slot as the triangle symbol on the xLCD board. Otherwise, the xLCD won't work.**

- Take the FE cable and fully slide the metal connector onto the FE Faston (brass connector) on the xLCD board. **Do not pull on the cable!**

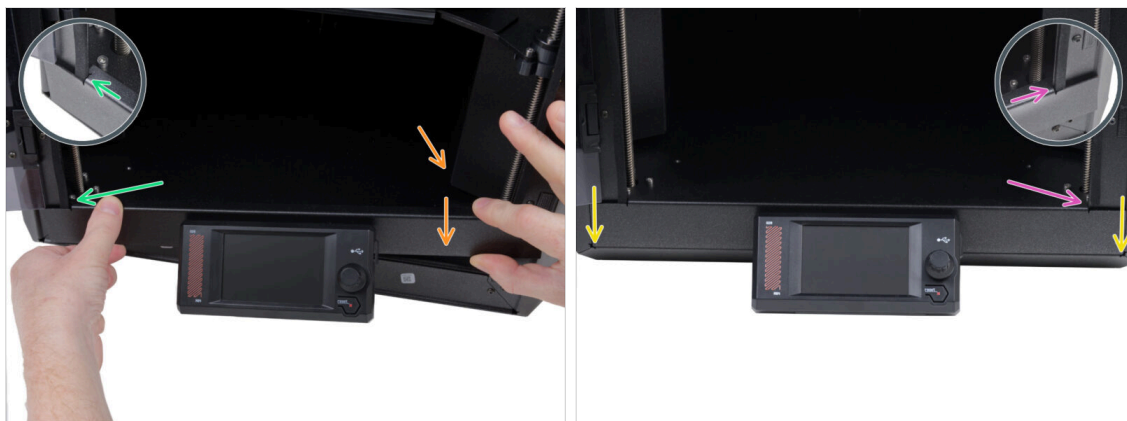
ⓘ For a better overview of the correct connection of both cables, see the illustrations.

STEP 5 Mounting the xLCD



- ✿ Install the bezel onto the screws on the back of the xLCD assembly.
- ✿ **Ensure the magnets face upward.** The bezel has four magnets, but only two are visible in the picture.
- ⬛ **Ensure both screws (M3x6) are not fully tightened,** leaving approximately a 3 mm (1/8 inch) gap between the screw head and the xLCD cover.
- ✿ Slide the bezel toward you, ensuring both screws are positioned at the end of the keyhole-shaped holes.
- ⬛ Keep the bezel in position and fully tighten both screws.

STEP 6 Attaching the display assembly



- Carefully install the display assembly (xLCD and bezel) onto the printer using the following procedure:

⚠ **Proceed carefully** to avoid scratching the parts or damaging the door.

- Hook the left side of the bezel onto the left frame of the printer, ensuring the square cutout is securely attached to the frame.
- Slowly lower the right side into place as well.
- Secure the right side of the bezel onto the right frame of the printer, ensuring the square cutout is securely attached to the frame.
- Ensure the **bezel is evenly seated at both ends along the bottom edge** — test it by closing the door slowly to check if the bezel obstructs movement.

STEP 7 Peeling off the protectives



- Now, you can remove the protective films from the transparent panels on the printer.
- The protective film is located on the top, left, and right sides of the printer.
- We are almost there! Let's go to the last chapter: **4. Calibration & First run**

4. Calibration & First run



STEP 1 Attaching the print sheet



i This chapter will guide you through calibrating and preparing the printer for its first run.

⚠ **Make sure there is nothing on the heatbed.** The heatbed must be clean. Any dirt can damage the surface of both the heatbed and the print sheet.

🟡 **Attach the sheet by first aligning the rear cutout with the locking pins on the back of the heated bed.** Hold the sheet by the front two corners and slowly lay it down onto the heated bed - **watch your fingers!**

🟢 Keep the **print sheet** clean for optimum performance.

🟢 #1 cause of prints detaching from the print surface is a greasy print sheet. **Use IPA (Isopropyl alcohol) to degrease it** if you have touched its surface before.

STEP 2 Turning it ON



🟡 Insert the USB drive included in your kit into your printer.

i The included USB drive contains the latest firmware file.

🟡 Connect the power cable and plug the printer into a wall outlet.

🟢 Turn the printer on using the switch on the back.

i The printer will now detect if a new firmware file is available on the USB drive.

🟡 If the "New firmware available" screen appears, hit **FLASH** by pressing the rotary knob to upgrade to the latest firmware.

🟢 If no such message appears, the printer is running the latest firmware already. Proceed to the next step.

STEP 3 Setting up the printer: Intro



- ✦ The printer displays on the screen a prompt to select your language. Use the control knob or touchscreen to set your preference.
- ✦ After selecting your language, the printer will display the welcome screen. Hit **OK** to continue through the setup process.
- ✦ The next screen will prompt you to select your printer model. Since the assembled Prusa CORE One is fully tested in our facility, it has been pre-selected to COREONE during these tests. Hit **Done** to continue.

STEP 4 Setting up the printer: Network setup



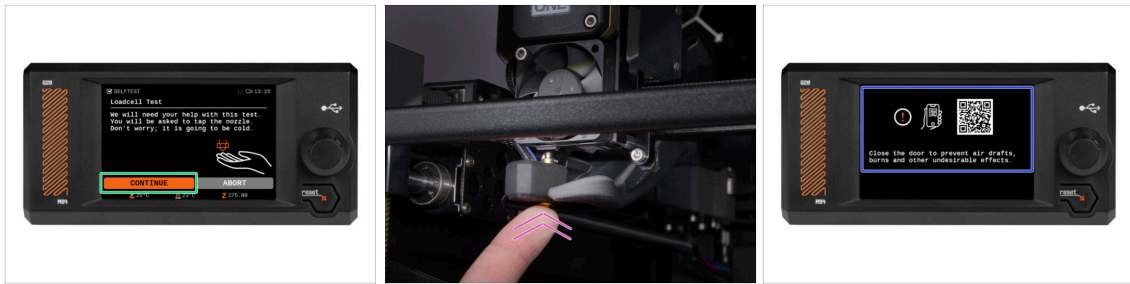
- ✦ The Network Setup screen will ask you to connect to a Wi-Fi network using our official Prusa mobile app.
 - ❗ Read more on prusa.io/app.
- ✦ If you select **No**, the printer will show alternative ways to connect to Wi-Fi. This step is optional and can be done later.
- ❗ You can skip this screen and set up the network connection later.

STEP 5 Wizard: Intro



- i** The printer will prompt you to run self-tests and calibrations for all important components. The entire process takes a few minutes, with some parts requiring direct user interaction.
- ◆** Although the printer was thoroughly tested at our facility, we highly recommend running the self-test again. Hit **YES** to start the self-test.
- ⚠** **Warning:** During the self-test, **keep the door closed** until you are prompted. Opening the door will interrupt the process.
- There are **HOT** and moving parts inside during the self-test.
- ⚠** **Caution:** Some parts of the Wizard, such as fan testing and axis calibration, **may be loud**.
- ◆** The printer will begin by testing all the fans. **Be aware—it will be quite noisy for a while!**

STEP 6 Wizard: Loadcell Test



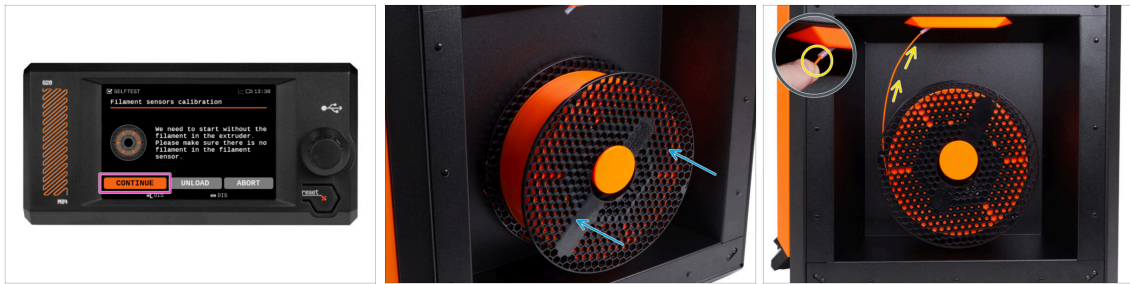
- The next step of the wizard will prompt you to touch the nozzle to test and calibrate the Loadcell. During this procedure, the **parts of the printer are not heated up** so that you can touch them. Hit **Continue**.
- i Loadcell calibration requires the door to be open, as you must interact directly inside the printer.
- Do not touch the nozzle yet, wait until prompted by the **Tap nozzle NOW** message.
- Tap the nozzle from below. In case the Loadcell does not detect the touch, you will be prompted to repeat the step. Otherwise, you will see **Loadcell test passed OK** when it succeeds.
- To allow the printer to continue with the Wizard, **close the door**.

STEP 7 Wizard: Gearbox Alignment



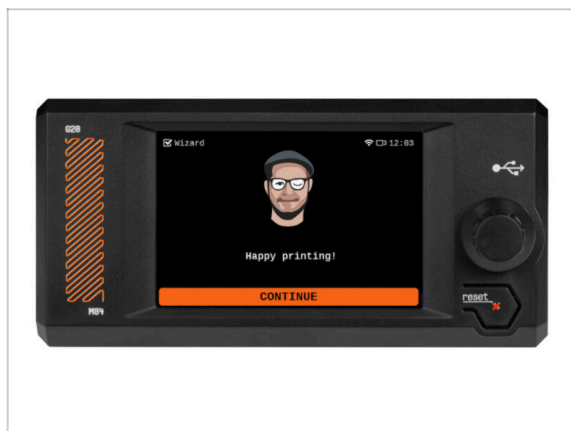
- The next screen will prompt you to perform gearbox calibration. This step is not necessary for pre-assembled printers from our company.
- Hit Skip to continue.

STEP 8 Wizard - Filament Sensor Calibration



- ◆ During the filament sensor calibration, you will need to use a short piece of filament. Prepare the filament and select **Continue**.
- ❗ There should be no filament inside the extruder before the calibration process starts.
- ◆ Place a spool of filament onto the spool holder on the right side of the printer.
- ◆ When prompted, begin inserting the filament into the PTFE tube located beneath the right handle.
- ◆ Remove the filament after the calibration finishes.

STEP 9 Wizard complete



- ◆ Congratulations! The Wizard is complete. Now it's time to test some prints.

STEP 10 Handbook

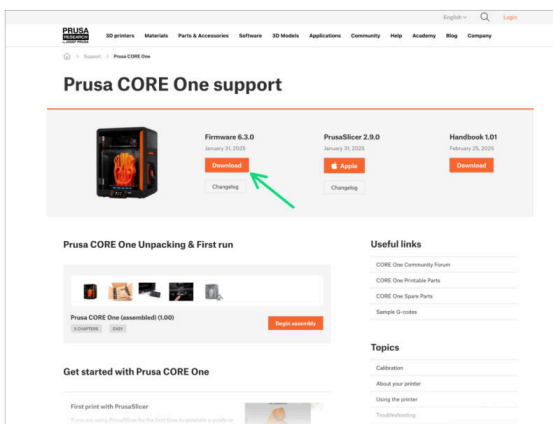
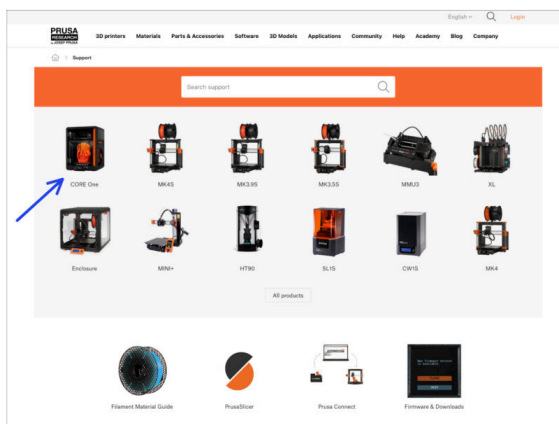


- Read the **3D Printing Handbook** dedicated to your printer and follow the instructions to set up the printer and prepare it for your first print.

The latest version is always available at help.prusa3d.com.

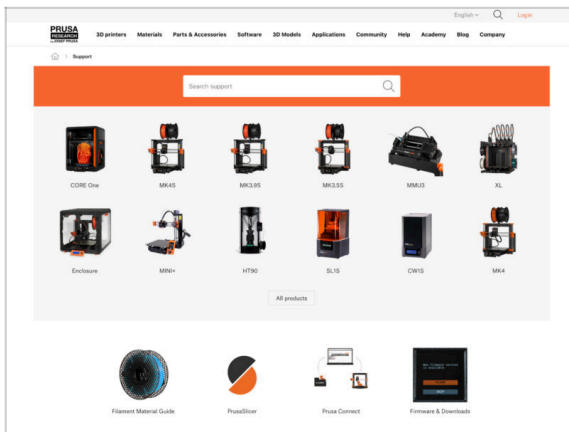
Read the Disclaimer and Safety instructions chapters.

STEP 11 Firmware update



- i** All shipped printer packages include a USB drive with the latest firmware. However, it is recommended to check and possibly upgrade the firmware version.
- Visit the help.prusa3d.com page.
- Navigate to the Prusa CORE One page.
- Save the firmware file (*.bbf*) onto the *bundled USB drive*.
- i** Pro tip: To access Prusa CORE One homepage you can use the URL: prusa.io/coreone

STEP 12 Prusa knowledge base

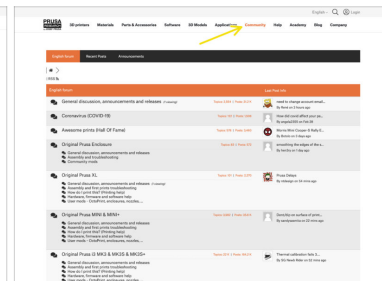
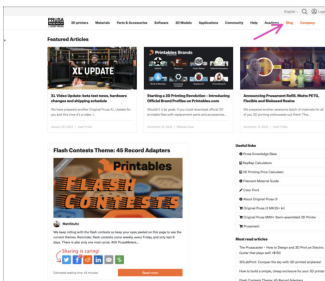
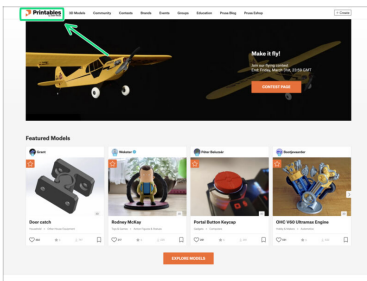






If you encounter any problems at all, don't forget you can always check out our knowledge base at help.prusa3d.com



We're adding new topics every day!

STEP 13 Join Printables!



-  Don't forget to join the biggest Prusa community! Download the latest models in STL or G-code tailored for your printer. Register at [Printables.com](https://printables.com)
-  Looking for inspiration on new projects? Check our blog for weekly updates.
-  If you need help with the build, check out our forum with a great community :-)
-  All Prusa services share one user account.

Manual changelog



STEP 1 Version history



- **Versions of the Prusa CORE One (assembled) manual:**
- 01/2025 - Initial version 1.00

[illegible]

[illegible]

Notes: