

Table of Contents

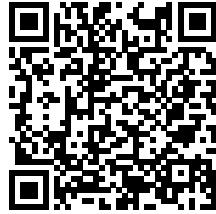
How to update PrusaLink (MK2.5/S MK3/S/+)	3
.....	
Step 1 - Introduction	5
Step 2 - Version compatibility	6
Step 3 - OTA PrusaLink Update (in PrusaLink)	
.....	7
Step 4 - Update complete (in PrusaLink)	7
Step 5 - OTA PrusaLink Update (in Prusa	
Connect)	8

How to update PrusaLink (MK2.5/S MK3/S/+)

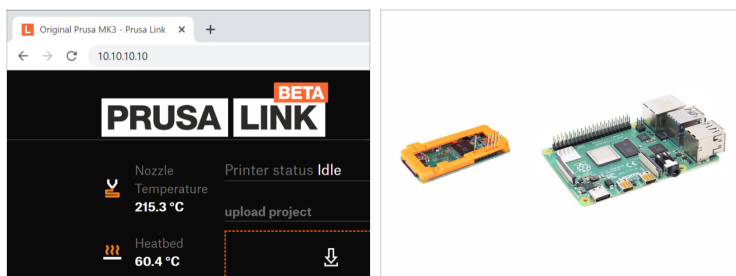


help.prusa3d.com/g650837

**Scan the QR code to
display the latest
version of this
chapter.**



STEP 1 Introduction

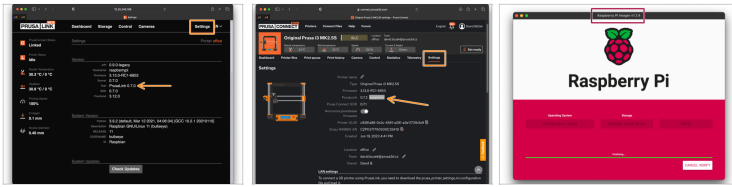


- In this guide, we will **update PrusaLink** software running on your Raspberry Pi 0/3/4 board connected to **MK2.5/S or MK3/S/+** printer.

📌 The latest software versions and release notes are always available at:
[Github.com/prusa3d/Prusa-Link/releases](https://github.com/prusa3d/Prusa-Link/releases)
However, when doing an OTA (over the air) update, you don't need to download anything.

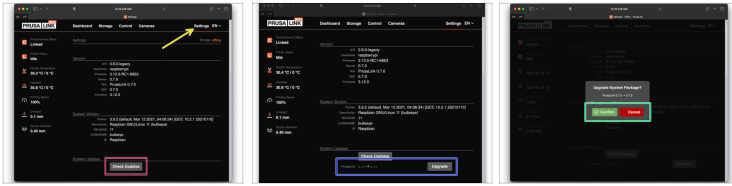
- ① For more info, visit the Prusa Connect and PrusaLink explained article.

STEP 2 Version compatibility



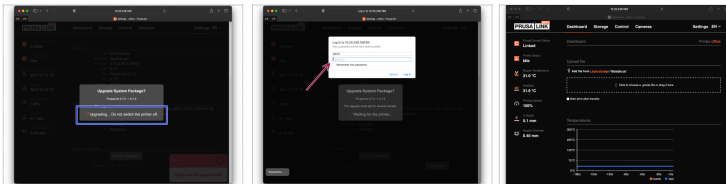
- 🟡 OTA updates require PrusaLink **version 0.7 or newer** running on your RPi 3 / 4 connected over USB, or RPi Zero connected via GPIO.
- 📌 You can easily check the version in the **Settings** tab in PrusaLink or in Prusa Connect.
- 🟡 If you are running PrusaLink version **0.7RC3 or older**, You have to manually flash a newer PrusaLink image onto the SD card using Raspberry Pi imager; essentially making a **fresh PrusaLink installation**.
- 📄 This way, you can also update PrusaLink setup with no internet access.

STEP 3 OTA PrusaLink Update (in PrusaLink)



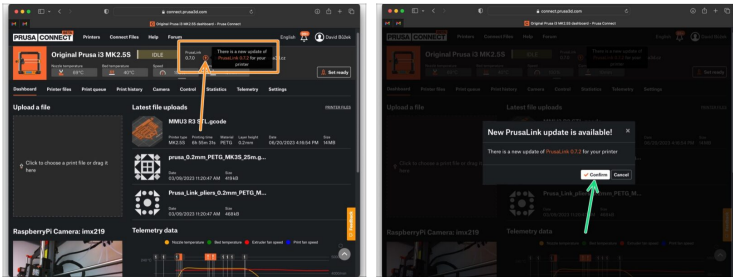
- 🟡 Open up PrusaLink, log in and visit the **Settings** tab.
- 🔴 Click **Check Updates**.
- 📄 Note that this function works only on a network with an internet access.
- 🟠 If there are any updates available, click the **Upgrade** button.
- 🟢 **Confirm** upgrading.

STEP 4 Update complete (in PrusaLink)



- 🟠 Wait until the update is complete. This might take up to a minute or two in case of the RPi Zero.
- 🔴 After the update finishes, you need to log in again.
- ⬛ Congratulations, your updated PrusaLink is ready.

STEP 5 OTA PrusaLink Update (in Prusa Connect)



- Similarly, you can update PrusaLink from Prusa Connect.
- If there are any updates available, the arrow icon shows up on the printer details page. Click the icon.
- Confirm updating and wait until the process completes.
- ① This process can take up to a few minutes to finish.
