

# Table of Contents

**How to assemble the PRUSA PRO face shield**  
..... 3

    Step 1 - Introduction ..... 5

    Step 2 - Preparing the face shield parts ..... 6

    Step 3 - Assembling the headband (upper part)  
            on the shield ..... 7

    Step 4 - Assembling the chin (lower part) on the  
            shield ..... 8

    Step 5 - Assembling the elastic band and final  
            check ..... 8

    Step 6 - Video guide - the face shield assembly  
            ..... 9

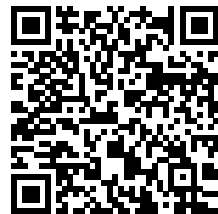


# How to assemble the PRUSA PRO face shield



[help.prusa3d.com/g136169](https://help.prusa3d.com/g136169)

Scan the QR code to  
display the latest  
version of this  
chapter.



## How to assemble the PRUSA PRO face shield

## STEP 1 Introduction



- ◆ This guide will take you through the assembly for the PRUSA PRO face shield designed by Prusa Research, which serves as personal protection.
- ◆ A shorter PDF version of the assembly is available [here](#).
- ◆ The PRUSA PRO face shield is certified according to the: ČSN EN 166:2002/OPR.1:2010 (EN 166:2001) 1 S 3.
- ◆ Recommended for a single-use. However, several disinfection methods were tested and approved in certified laboratories. More in the disinfection article.
- ◆ The printable files including the description of the changes are available at [prusaprinters.org](https://prusaprinters.org)

## STEP 2 Preparing the face shield parts

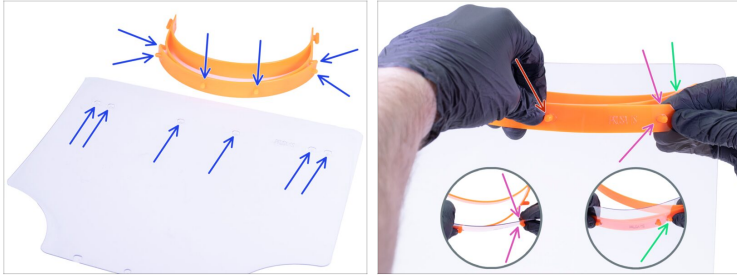


- ⚠ **WARNING: Wash your hands and your surroundings first**, before you start to assemble the face shield. Use the following steps or jump to the last step for a video guide.
- ⚠ **Please prepare the following:**
  - 🔴 Upper part - headband (1x)
  - 🟡 Lower part - chin (1x)
  - 🟢 Buttonhole elastic band (1x)
  - 🟠 Shield from plexiglass (1x)
- 🔵 It is recommended to use gloves during the assembly.
- 🟡 **The plexiglass is covered with a protective film from both sides**, peel it off carefully. You can use a knife or your fingernail to lift the film up.

---

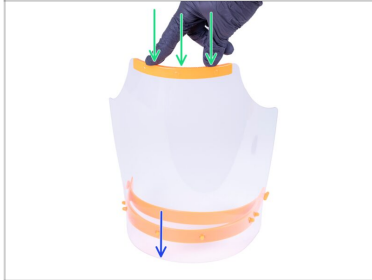
## STEP 3 Assembling the headband (upper part) on the shield

## How to assemble the PRUSA PRO face shield



- ◆ Place the plexiglass in front of you, turn the wider side with six holes up. Place the headband near the top edge, see the six pins (protrusions). We will use them to assemble the plexiglass, starting in the middle.
- ⓘ For easier assembly, it is recommended to push your hand through the headband.
- ◆ Mount the plexiglass on the headband using the third hole from the right. Hold it with your thumb.
- ◆ Carefully straighten the right side of the headband along the plexiglass and insert the pin. As soon as the pin is through, you can release the thumb.
- ◆ Straighten the right edge again and insert the marked pin.
- ⓘ Continue on the other side of the headband, apply the same approach. Straighten the headband, avoid bending the plexiglass.

## STEP 4 Assembling the chin (lower part) on the shield



- ◆ Place the shield on a solid surface.
- ◆ Assemble the chin on the edge with three holes and push it gently. Both parts should "click".

## STEP 5 Assembling the elastic band and final check



- ◆ Take either end of the elastic band and hook it around the protrusion on the end of the headband.
- ◆ Place the other end of the elastic band on the opposite side of the headband. Adjust the length if needed.
- ◆ **The face shield is ready!!! Disinfect the shield before the use.**
- ⓘ To disinfect the shield you can use Prusa Face Shield disinfection
- ⓘ In case you have an idea for any improvement, please contact us using [covid@prusa3d.com](mailto:covid@prusa3d.com). Thank you ;)

## STEP 6 Video guide - the face shield assembly



- Use this video guide to assemble the face shield.
- **Disinfect the shield before the use.**
- **To disinfect the shield** you can use Prusa Face Shield disinfection
- In case you have an idea for any improvement, please contact us using **covid@prusa3d.com**. Thank you ;)



---

---

---

---

---

---

---

---

---

---



---

---

---

---

---

---

---

---

---

---



---

---

---

---

---

---

---

---

---

---

