

Tabla de Contenido

Como reemplazar las tuercas trapezoidales

(XL)	3
Paso 1 - Introduction	5
Paso 2 - Tools necessary for this guide	6
Paso 3 - Heatbed assembly versions	7
Paso 4 - Detaching the bed frame mounts	8
Paso 5 - Retirando el alojamiento del rodamiento del eje Z	9
Paso 6 - Detaching the heatbed	10
Paso 7 - Removing the heatbed	11
Paso 8 - Removing the trapezoid nuts	12
Paso 9 - Preparing the trapezoid nuts and screws	13
Paso 10 - Installing the new trapezoid nuts	13
Paso 11 - Re-attaching the heatbed	14
Paso 12 - Installing the heatbed	14
Paso 13 - Preparación del alojamiento del rodamiento del eje Z	15
Paso 14 - Instalando la carcasa de los rodamientos del eje Z	15
Paso 15 - Preparing the heatbed screws	16
Paso 16 - Fixing the bed frame mounts in place	16
Paso 17 - Testing the printer	17
Paso 18 - Good job!	17

Como reemplazar las tuercas trapezoidales (XL)



help.prusa3d.com/g973767

**Escanea el código
QR para ver la última
versión de este
capítulo.**



PASO 1 Introduction



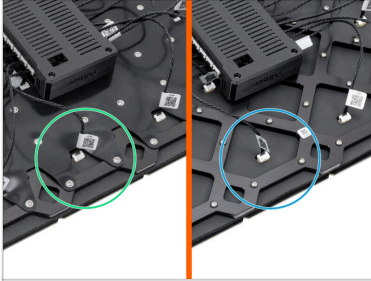
- This guide will show you how to exchange the trapezoid nuts on the modular bed on your Original Prusa XL printer.
- This guide is suitable for all XL printer versions.
- All necessary parts are available in our eshop prusa3d.com
- Preparing the printer:
 - Desde la parte trasera, apaga el interruptor de encendido (símbolo "O").
 - Desenchufa el cable de alimentación.

PASO 2 Tools necessary for this guide



- For this guide, please prepare:
- 2.5mm Allen key
- Torx screwdriver T10

PASO 3 Heatbed assembly versions



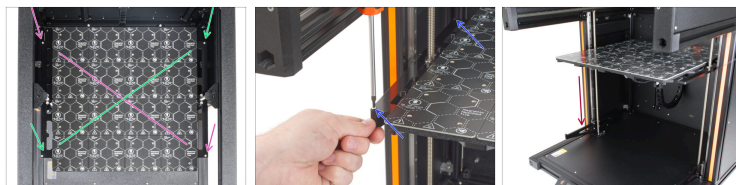
i Starting from April 2025, you may receive a new heatbed. The only difference is the black rubber band on a back side of the heatbed.

i **The replacement process remains the same for both versions.**

- ◆** New heatbed version with a rubber band.
- ◆** Old heatbed version without a rubber band. The assembly is the same as the new one.

⚠ **Do not disconnect any of these heatbed cables yet. Photos are for illustrative purposes only.**

PASO 4 Detaching the bed frame mounts



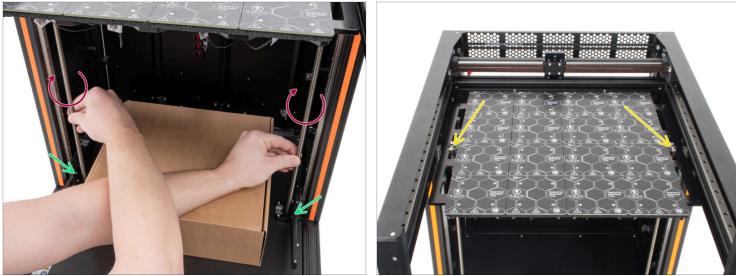
- Comience aflojando ligeramente en forma cruz los cuatro tornillos M3x12rT utilizando el destornillador T10. **No los afloje del todo todavía.**
- En primer lugar, afloja ligeramente los tornillos delantero derecho y trasero izquierdo.
- A continuación, afloja ligeramente los tornillos delantero izquierdo y trasero derecho.
- Hold the bed frame mount fixed (left) in place and completely loosen both M3x12rT screws.
- As you completely loosen both left M3x12rT screws, slowly slide the bed frame mount fixed (left) down.
- Loosen the bed frame mount rotary (right) from the heatbed frame using the same technique.
- ⓘ **Make sure that you detach both bed frame mounts before removing the heatbed in the further steps.**
- ⚠ **Removing the bed frame mounts from the threaded rods would lead to the bearings falling out!**
- ⓘ Set the four M3x12rT screws aside; we will need them later.

PASO 5 Retirando el alojamiento del rodamiento del eje Z



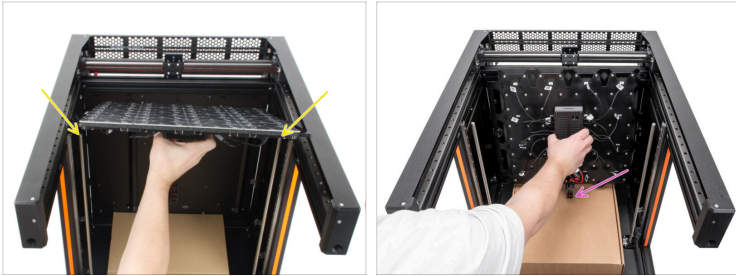
- ◆ Para desmontar el alojamiento del rodamiento, afloja los dos tornillos M3x10 con la llave Allen de 2.5 mm.
- ◆ Aleja las tuercas HB M3nEs de la guía lineal.
- ◆ Repite el mismo proceso para retirar el alojamiento del rodamiento del otro lado.
- ⓘ Aparta los cuatro tornillos M3x10, los necesitaremos más tarde.

PASO 6 Detaching the heatbed



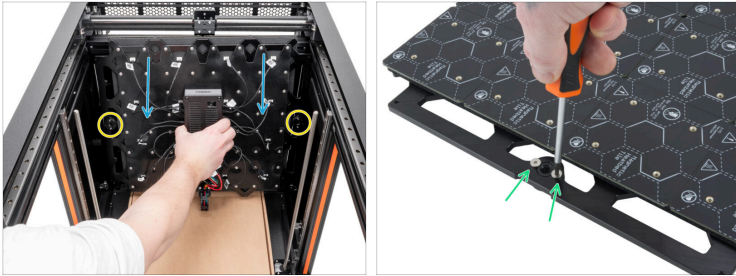
- i** Place a piece of cardboard below the heatbed to prevent any scratches or damage to the heatbed and the XL printer.
- ◆** By rotating the threaded rods clockwise on both sides, move the heatbed just below the top of the threaded rods.
- ◆** Double-check that the **bed frame mounts are not connected to the heatbed** and are resting at the bottom of the threaded rods.
- ⚠** **Make sure that the heatbed is always as leveled as possible while you are raising it by rotating the threaded rods with your hands.**
- ◆** The heatbed is now barely holding at the end of the threaded rods.
Hold the heatbed in place so it does not fall off.

PASO 7 Removing the heatbed



- Levanta la base calefactable de la parte superior de las varillas roscadas. Las dos tuercas trapezoidales laterales deben desengancharse de una varilla roscada.
- Carefully place the heatbed on the cardboard at the center of the printer, with the terminals facing down. Keep the heatbed in an upright position.
- Pay attention to the connected heatbed cables. Once you lower the heatbed, make sure not to damage or clamp the cables.

PASO 8 Removing the trapezoid nuts



- ◆ Lean the heatbed towards you slightly.
- ◆ You now have access to the two M4x12rT screws that hold the trapezoid nuts in place on the other side.
 - ⓘ Do not remove the heatbed completely. The heatbed in the photo is apart from the printer for illustrative purposes only.
- ◆ Detach the trapezoid nuts from the heatbed frame by removing the two M4x12rT screws using the T10 Torx screwdriver.
- ◆ Remove the two M4x12rT screws on the other side as well.
 - 📌 Put the four M4x12rT screws aside; you will need them in a moment.

PASO 9 Preparing the trapezoid nuts and screws



● Para los siguientes pasos, por favor prepara:

● New trapezoid nuts (2x)

● M4x12rT screws (4x)

PASO 10 Installing the new trapezoid nuts



● Lean the heatbed towards you slightly again to gain access to the other side of the heatbed.

● Attach the new trapezoid nuts to the heatbed frame by gently tightening the two M4x12rT screws using the T10 Torx screwdriver.

PASO 11 Re-attaching the heatbed



- ◆ Attach the heatbed to the top of the threaded rods. Both of the trapezoid nuts on the sides must engage with a threaded rod.
- ⚠ **Pay attention to the connected cables while you are attaching the heatbed!**
- ◆ Using your hand, slightly rotate the threaded rods counter-clockwise until both of the rods engage with the nut on the side of the heatbed.

PASO 12 Installing the heatbed



- ◆ The heatbed is now placed on top, holding onto the threaded rods.
- ◆ By rotating the threaded rods by hand counter-clockwise on both sides, move the heatbed approximately 5 cm / 1,9 inch below the top of the threaded rods.
- ⚠ **Make sure the heatbed is always as leveled as possible while you are moving it by rotating the threaded rods with your hands.**

PASO 13 Preparación del alojamiento del rodamiento del eje Z



● Para los siguientes pasos, por favor prepara:

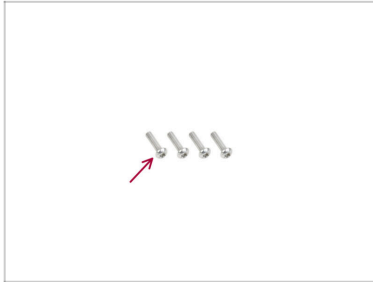
- Soporte de rodamiento Eje Z (2x)

PASO 14 Instalando la carcasa de los rodamientos del eje Z



- Mueve las tuercas HB M3nEs hacia el raíl lineal a ambos lados de la impresora.
- Instala el alojamiento del rodamiento del eje Z en las tuercas M3nEs.
- Fijalo en su sitio con dos tornillos M3x10 utilizando la llave Allen de 2.5mm.
- ⓘ Repite este procedimiento en el otro lado también.

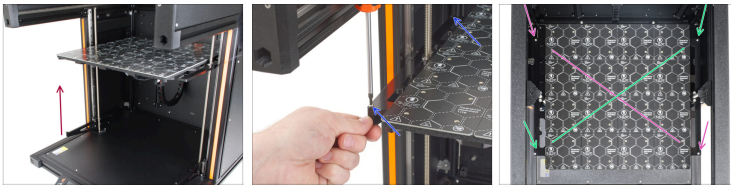
PASO 15 Preparing the heatbed screws



● Para los siguientes pasos, por favor prepara:

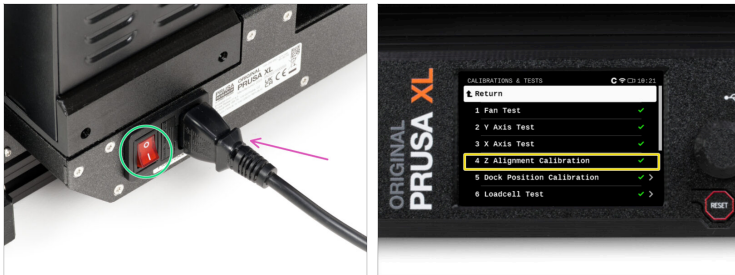
- M3x12rT screw (4x)

PASO 16 Fixing the bed frame mounts in place



- Take the bed frame mount fixed (left) and slide it up to the heatbed frame.
- Fix it to the heatbed frame with two M3x12rT screws using the T10 screwdriver. Do not tighten the screws all the way yet!
- Continue by fixing the bed frame mount rotary (right) to the heatbed frame using the same technique.
- Once the screws are in place, tighten them in a cross pattern:
 - Tighten the front right and rear left screws first.
 - Continue by tightening the front left and rear right screws.

PASO 17 Testing the printer



- ◆ Desde la parte posterior, enchufa el cable de alimentación.
- ◆ Enciende el interruptor (símbolo "I").
- ◆ Run the Z alignment calibration from the menu. *Control -> Calibrations & tests -> Z alignment calibration.*

PASO 18 Good job!



- ◆ Well done! You have just successfully replaced the trapezoid nuts on your Original Prusa XL.
