

Tabla de Contenido

How to replace the Belt Tensioner Right (CORE One)	3
Paso 1 - Introduction	4
Paso 2 - Tools necessary for this guide	5
Paso 3 - Printer Preparation	5
Paso 4 - Tensioner Pulley Info	6
Paso 5 - Tensioner Pulley Removal	6
Paso 6 - Pulley Assembly Disassembly	7
Paso 7 - Belt-Tensioner-Right Removal	7
Paso 8 - Belt-Tensioner-Right Preparation	8
Paso 9 - Belt-Tensioner-Right Installation	8
Paso 10 - Belt-Tensioner-Pulley Preparation	9
Paso 11 - Tensioner Preparation	9
Paso 12 - Pulley Assembly	10
Paso 13 - Tensioning Bolt Lubrication	11
Paso 14 - Pulley Assembly Installation	12
Paso 15 - Belt Tensioning	12
Paso 16 - Finish	13

How to replace the Belt Tensioner Right (CORE One)



help.prusa3d.com/g948794

Escanea el código
QR para ver la última
versión de este
capítulo.



PASO 1 Introduction



- This guide will take you through the **Belt-tensioner-right** and the **Belt-tensioner-pulley** assemblies replacement on your Prusa **CORE One**.
- Todas las piezas necesarias están disponibles en nuestra tienda prusa3d.com.
- 📌 Ten en cuenta que debes iniciar sesión para tener acceso a la sección de repuestos.
- ⚠️ **Advertencia: En esta guía manipularás chapas metálicas. ¡¡Ten cuidado!!**

PASO 2 Tools necessary for this guide



- Por favor prepara las herramientas para este guía:
 - 2.5mm Allen key
 - Prusa lubricant or another suitable grease (available in e-shop)

PASO 3 Printer Preparation



- En la impresora, ve al menú **Control** y selecciona **Auto Home**.
- Apaga la impresora mediante el interruptor situado en la parte posterior.
- Desconecta la impresora de la corriente.

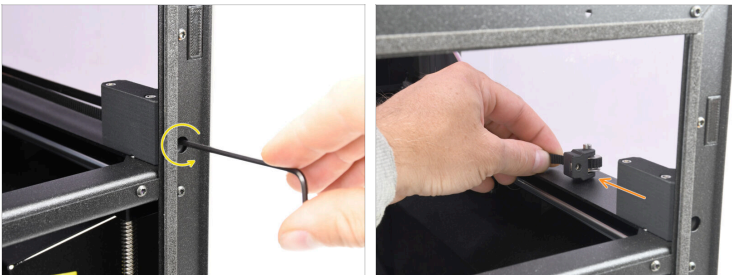
PASO 4 Tensioner Pulley Info



- Two belt-tensioner assemblies are located on each side of the printer.

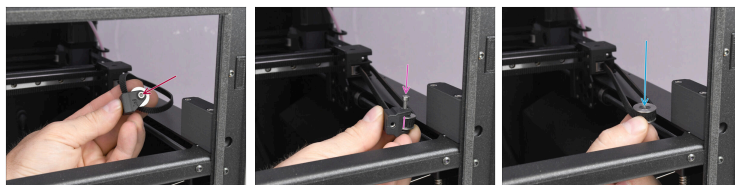
i In this guide, we will be replacing the assembly on the **right side** only.

PASO 5 Tensioner Pulley Removal



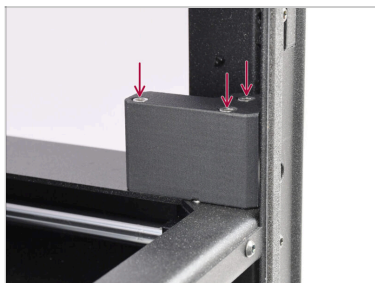
- Fully loosen the belt tensioning screw.
 - On the inside of the printer, pull by the belt to disengage the belt-tensioner-pulley assembly.
- i** If the pulley assembly can't be removed this way, skip this step and disassemble it after removing the entire tensioner assembly.

PASO 6 Pulley Assembly Disassembly



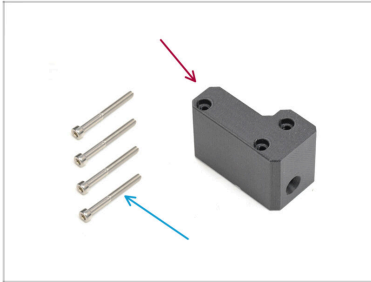
- On the pulley assembly, remove the M3x18 screw.
- The plastic part and the GT2-20 Idler Pulley will separate.
- Remove the GT2-20 Idler Pulley from the belt.

PASO 7 Belt-Tensioner-Right Removal



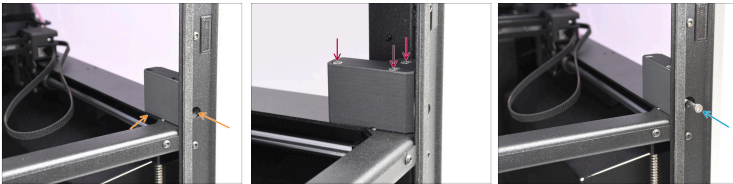
- On the inside of the printer, remove the three screws holding the belt-tensioner-right part and remove the component.

PASO 8 Belt-Tensioner-Right Preparation



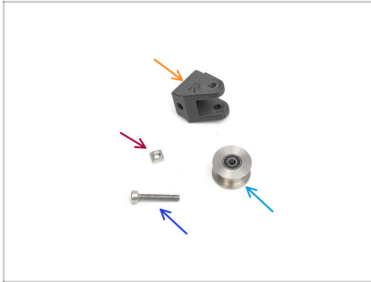
- Para los siguientes pasos, prepara:
- Belt-tensioner-right (1x)
- M3x30 screw (4x)

PASO 9 Belt-Tensioner-Right Installation



- Add the new belt-tensioner-right part into the printer. Align it with the Core-XY assembly as well as with the tensioning opening at the front.
 - Fix the part in place on the CoreXY assembly using the three M3x30 screws.
 - Insert the M3x30 tensioning screw into the front opening.
- (i)** Do not tighten the screw yet, as there are no threads in the part to engage with. It will be installed later.

PASO 10 Belt-Tensioner-Pulley Preparation



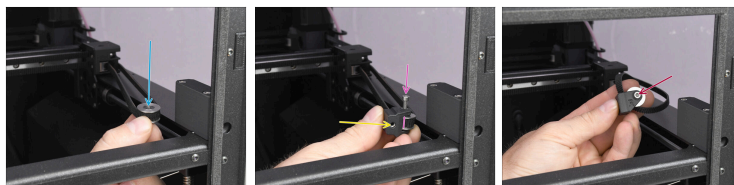
- **Para los siguientes pasos, prepara:**
- Belt-tensioner-pulley plastic part (1x)
- M3nS nut (1x)
- M3x18 screw (1x)
- GT2-20 Idler Pulley (1x)

PASO 11 Tensioner Preparation



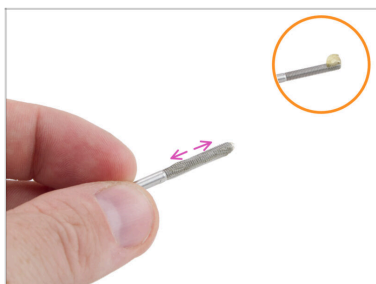
- Note that the Belt-tensioner-pulley part has "R" and "L" markings; for use on the right side, ensure the "R" is facing up.
- Insert the M3nS nut into the corresponding opening in the plastic part and push it all the way in.

PASO 12 Pulley Assembly



- Hook the GT2-20 Idler Pulley by the belt on the inside of the printer.
- ⚠ **Make sure the belt is straight and not twisted!**
- Attach the Belt-tensioner-pulley plastic part onto the pulley itself.
- ⚠ **Make sure the part with the nut is pointing towards the center of the printer!!**
- Align both parts and fix them together using the M3x18 screw.
- Tighten the screw.
- ⓘ The "R" marking should be visible on top.

PASO 13 Tensioning Bolt Lubrication



- Before re-installing the M3x30 **belt tensioning bolt**, it should be lubricated to ensure smooth belt adjustment and to prevent the tensioner from seizing.
- Apply a small amount of Prusa lubricant to the tip of the M3x30 screw.
- Extiende el lubricante uniformemente por toda la rosca.

PASO 14 Pulley Assembly Installation



- Push the assembly towards the inside of the belt-tensioner plastic part inside the printer.
- The opening with the nut on the pulley assembly must align with the tensioning bolt.
- Tighten the M3x30 tensioning bolt to fix the assembly in place.



Do not tighten the screw fully yet.

PASO 15 Belt Tensioning



- Conecta la impresora a la corriente.
- Enciende la impresora mediante el interruptor situado en la parte posterior.
- Visit the Adjusting belt tension article and tighten both the belts to the correct tension.

PASO 16 Finish



- ◆ To finish the repair, we recommend to visit the menu ***Control -> Calibrations & Tests*** and run the Selftest.
- ◆ Congratulations. Your printer is ready for use again.
