

How to replace the Belt Tensioner Pulley (CORE One)



help.prusa3d.com/g948770

Escanea el código
QR para ver la última
versión de este
capítulo.



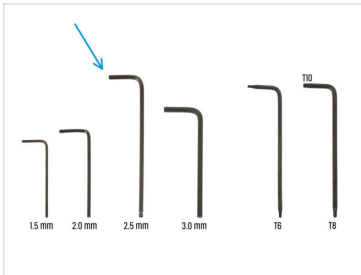
PASO 1 Introduction



- ◆ This guide will take you through the **Belt-tensioner-pulley** assembly replacement on your Prusa **CORE One**.
- ◆ Todas las piezas necesarias están disponibles en nuestra tienda prusa3d.com.
- 📌 Ten en cuenta que debes iniciar sesión para tener acceso a la sección de repuestos.
- ⚠️ **Advertencia: En esta guía manipularás chapas metálicas. ¡¡Ten cuidado!!**

How to replace the Belt Tensioner Pulley (CORE One)

PASO 2 Tools necessary for this guide



- **Por favor prepara las herramientas para este guía:**
 - 2.5mm Allen key
 - Prusa lubricant or another suitable grease (available in e-shop)

PASO 3 Printer Preparation



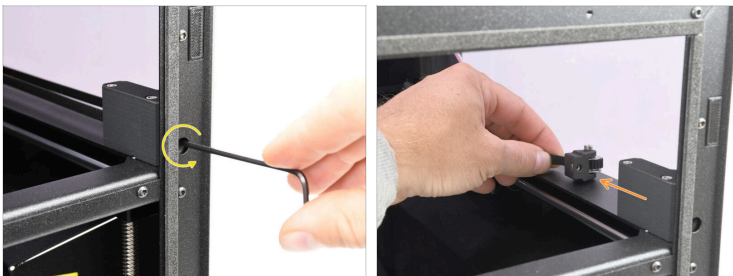
- En la impresora, ve al menú **Control** y selecciona **Auto Home**.
- Apaga la impresora mediante el interruptor situado en la parte posterior.
- Desconecta la impresora de la corriente.

PASO 4 Tensioner Pulley Info



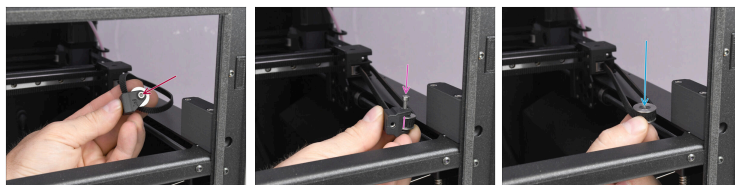
- ◆ There are two belt tensioner pulleys on each side.
- ⓘ In this guide, we demonstrate the replacement of the component on the right side of the printer, but the process is the same for the left side as well.

PASO 5 Tensioner Pulley Removal



- ◆ Fully loosen the belt tensioning screw.
- ◆ On the inside of the printer, pull by the belt to disengage the belt-tensioner-pulley assembly.

PASO 6 Pulley Assembly Disassembly



- On the pulley assembly, remove the M3x18 screw.
- The plastic part and the GT2-20 Idler Pulley will separate.
- Remove the GT2-20 Idler Pulley from the belt.

PASO 7 Belt-Tensioner-Pulley Preparation



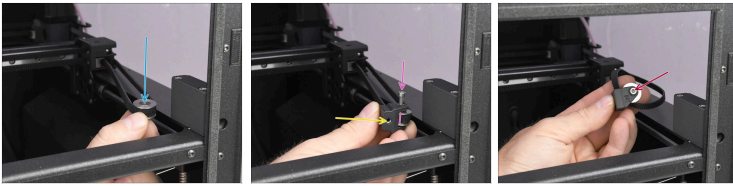
- **Para los siguientes pasos, prepara:**
- Belt-tensioner-pulley plastic part (1x)
- M3nS nut (1x)
- M3x18 screw (1x)
- GT2-20 Idler Pulley (1x)

PASO 8 Tensioner Preparation



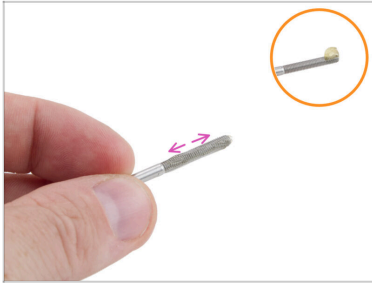
- ⬢ Note that the Belt-tensioner-pulley part has "R" and "L" markings; for use on the right side, ensure the "R" is facing up, and for the left side, the "L" should face up.
- ⬢ Insert the M3nS nut into the corresponding opening in the plastic part and push it all the way in.

PASO 9 Pulley Assembly



- ◆ Hook the Idler Pulley by the belt on the inside of the printer.
 - ⚠ **Make sure the belt is straight and not twisted!**
- ◆ Attach the Belt-tensioner-pulley plastic part onto the pulley itself.
 - ⚠ **Make sure the part with the nut is pointing towards the center of the printer!!**
- ◆ Align both parts and fix them together using the M3x18 screw.
 - ◆ Tighten the screw.
 - ⓘ There should be either the "R" or "L" marking visible on top, depending on the side you are working on.

PASO 10 Tensioning Bolt Lubrication




- Before re-installing the M3x30 **belt tensioning bolt**, it should be lubricated to ensure smooth belt adjustment and to prevent the tensioner from seizing.
- Apply a small amount of Prusa lubricant to the tip of the M3x30 screw.
- Extiende el lubricante uniformemente por toda la rosca.

PASO 11 Tensioner Installation



- Push the assembly into the belt-tensioner plastic part in the printer.
- The opening with the nut on the pulley assembly must align with the tensioning bolt.
- Tighten the M3x30 tensioning bolt to fix the assembly in place.

 Do not tighten the screw fully yet.

PASO 12 Belt Tensioning



- Conecta la impresora a la corriente.
- Enciende la impresora mediante el interruptor situado en la parte posterior.
- Visit the Adjusting belt tension article and tighten both the belts to the correct tension.

PASO 13 Finish



- ◆ To finish the repair, we recommend to visit the menu ***Control -> Calibrations & Tests*** and run the Selftest.
- ◆ Congratulations. Your printer is ready for use again.
