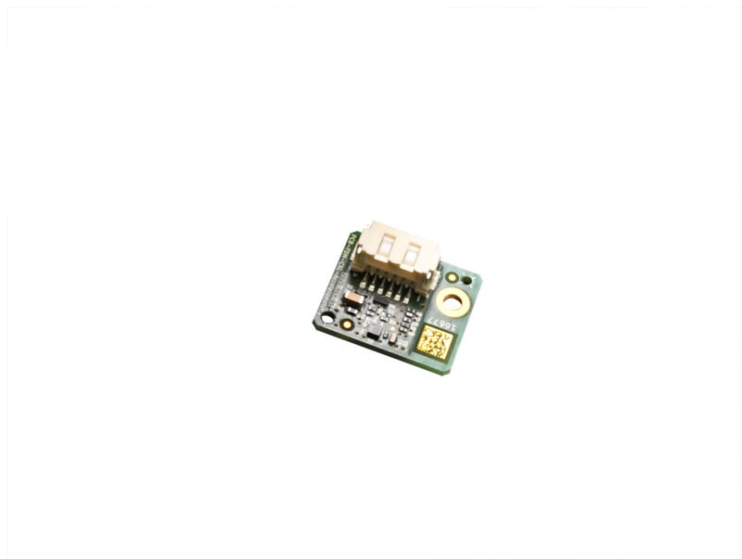


# Tabla de Contenido

|  |    |
|--|----|
| <b>How to replace the Accelerometer (CORE One L)</b> ..... | 3  |
| Paso 1 - Introduction .....                                | 4  |
| Paso 2 - Tools Required .....                              | 4  |
| Paso 3 - Printer Preparation .....                         | 5  |
| Paso 4 - Printer Preparation 2 .....                       | 5  |
| Paso 5 - Top Cover Removal .....                           | 6  |
| Paso 6 - Heatbed Protection .....                          | 7  |
| Paso 7 - PTFE Disconnection .....                          | 7  |
| Paso 8 - Left Cover Removal .....                          | 8  |
| Paso 9 - Print Head Preparation .....                      | 8  |
| Paso 10 - Print Head Preparation 2 .....                   | 9  |
| Paso 11 - Accelerometer Removal .....                      | 10 |
| Paso 12 - Accelerometer Preparation .....                  | 10 |
| Paso 13 - Accelerometer Installation .....                 | 11 |
| Paso 14 - Cable Guidance .....                             | 11 |
| Paso 15 - Rear Cover Installation .....                    | 12 |
| Paso 16 - Print Head Covering .....                        | 12 |
| Paso 17 - Top Cover Attachment .....                       | 13 |
| Paso 18 - Power Up .....                                   | 14 |
| Paso 19 - Final check .....                                | 15 |



# How to replace the Accelerometer (CORE One L)

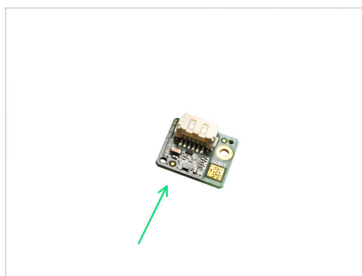


[help.prusa3d.com/g947942](https://help.prusa3d.com/g947942)

Escanea el código  
QR para ver la última  
versión de este  
capítulo.

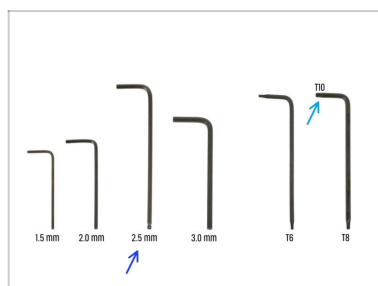


## PASO 1 Introduction



- ◆ This guide will take you through the **Accelerometer replacement** on your Original Prusa **CORE One L**.
- ◆ Todas las piezas necesarias están disponibles en nuestra tienda [prusa3d.com](https://prusa3d.com).
- 📌 Ten en cuenta que debes iniciar sesión para tener acceso a la sección de repuestos.

## PASO 2 Tools Required



- ◆ **Prepara las herramientas para este guía:**
  - ◆ 2.5mm Allen key
  - ◆ Llave / Destornillador T10

## PASO 3 Printer Preparation



- 🟠 Close the door.
- 🟢 Navigate to menu **Filament** -> **Unload filament**
- 🟡 Pull out the filament.
- ⬛ Retira la bobina de filamento de la impresora.
- ⚠️ **Ensure that the printer has cooled down.**
  - ⬛ Navigate to **Preheat** -> **Cooldown** and wait for the temperatures to drop. This may take several minutes.

## PASO 4 Printer Preparation 2



- 🟢 Abre el menú **Control** -> **Mover Eje** -> **Mover Z** y baja completamente la base calefactable.
- 🟠 Espera hasta que la base calefactable se mueva hacia abajo.
- 🟢 Turn off the printer using the switch on the back.
- 🟡 Unplug the mains cable.

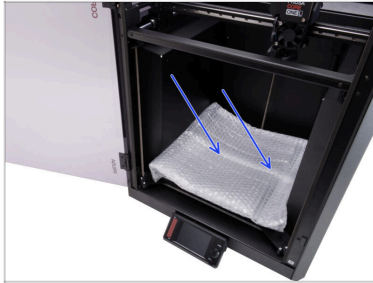
## PASO 5 Top Cover Removal



- ◆ Open the door and reach in to the bottom side of the top cover.
- ⓘ The cover is held in place by a set of plastic latches.
- ◆ Locate two of the latches at the bottom front. Squeeze them together simultaneously.
- ◆ Lift the cover to unhook it. Pull the cover to the front.
- ◆ Retira la cubierta superior.

---

## PASO 6 Heatbed Protection

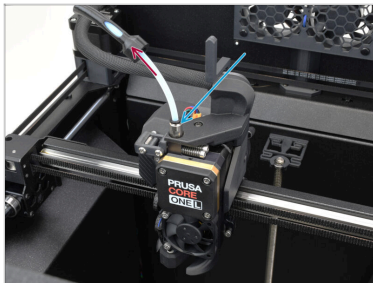


**⚠** Before proceeding, it is recommended to protect the heatbed!

- Use a piece of fabric, cardboard, bubble wrap, or another suitable material to cover the heatbed to prevent any damage.

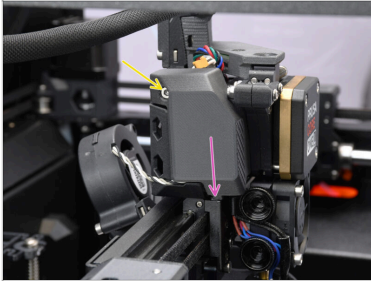
---

## PASO 7 PTFE Disconnection



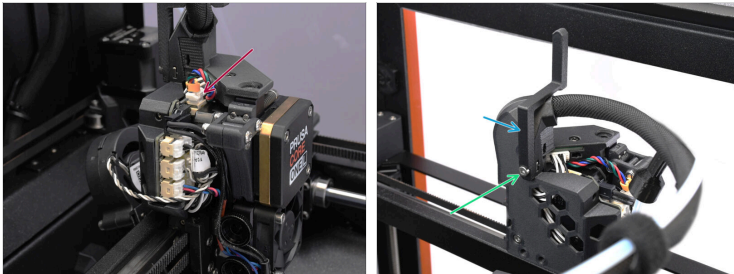
- Pull up the fitting cover on the extruder PTFE tube.
- Unscrew the PTFE fitting from the extruder and set the tube aside.

## PASO 8 Left Cover Removal



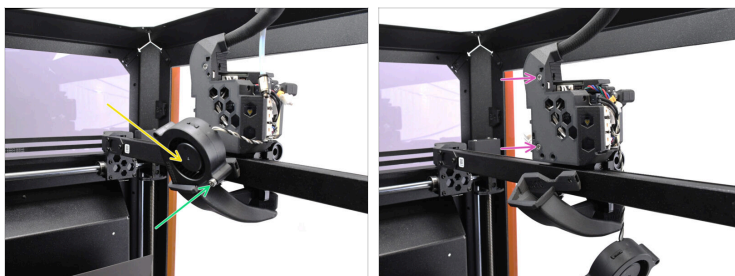
- Using the 2.5mm Allen key, remove the M3x10 screw on top of the Printhead-cover-left (cover).
- Unhook the cover from the bottom and remove it.

## PASO 9 Print Head Preparation



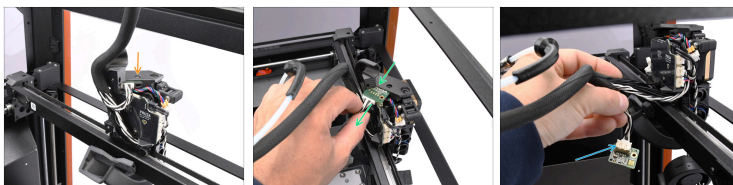
- On top of the print head, disconnect the E-motor cable from the Loveboard.
  - ⚠ Note that each connector has a safety latch that must be pressed when disconnecting the cable; failing to do so may damage the connector.
- On the back of the print head, remove the M3x10 screw holding the lever.
- Remove the lever and set it aside.

## PASO 10 Print Head Preparation 2



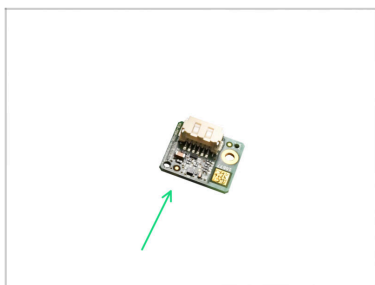
- On the back, remove the M3x20 screw holding the print fan.
- Retira el ventildor de capa.
  - ⚠ You may leave the print fan hanging by the cable temporarily, but handle it carefully to avoid damaging the connector.
- Remove the two M3x10 screws holding the rear cover. Then, remove the cover.

## PASO 11 Accelerometer Removal



- Using the T10 key, remove the M3x10bT screw on top of the print head, holding the Accelerometer in place.
  - Gently pull by the accelerometer cable to remove its PCB from the print head.
  - Disconnect the accelerometer from the cable and set it aside.
- i** Note that each connector has a safety latch that must be pressed when disconnecting the cable; failing to do so may damage the connector.

## PASO 12 Accelerometer Preparation



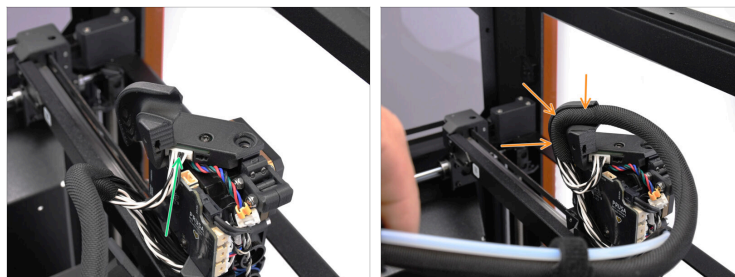
- **Para los siguientes pasos, prepara:**
- Core One L Accelerometer (1x)

## PASO 13 Accelerometer Installation



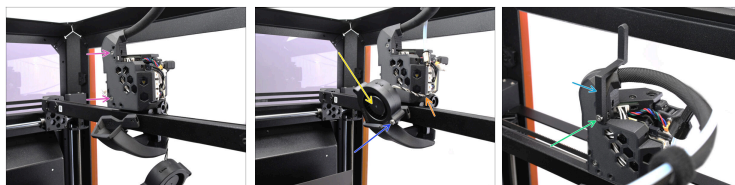
- Insert the new accelerometer PCB into the dedicated opening on the top of the print head.
- Once fully inserted, verify the screw opening aligns with the hole on top of the plastic part.
- Fix the accelerometer in place using the previously removed M3x10bT screw.

## PASO 14 Cable Guidance



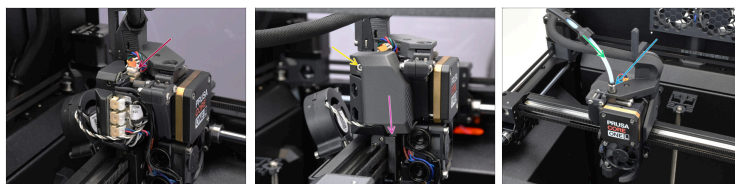
- Connect the Accelerometer cable.
- Guide the extruder main cable bundle through the groove on the back of the print head.

## PASO 15 Rear Cover Installation



- ◆ Reinstall the rear cover onto the print head and fix it in place using the two M3x10 screws.
- ◆ Reinstall the print fan into the holder at the back.
- ◆ Guide the print fan cable through the groove on the side of the print head.
- ◆ Reinstall the ventilation control lever.
  - ◆ Fijala en su sitio con el tornillo M3x10.

## PASO 16 Print Head Covering



- ◆ Connect the E-motor cable into the top of the LoveBoard.
- ◆ Install the side cover onto the print head. First, hook it up at the bottom.
  - ◆ Then, fix it in place using the M3x10 screw.
- ◆ Install the PTFE tube fitting to the extruder.
- ◆ Slide the cover down, to protect the fitting.


## PASO 17 Top Cover Attachment







- ◆ Place the back of the cover onto the printer, with the ventilation grille facing you.
- ◆ Slide the cover backward until the rear part hooks into place.
- ◆ Once the back is secured, lower the front of the cover and gently push it down until the front latches snap into place.

## PASO 18 Power Up



 Ensure the printer is placed on a stable surface where ambient vibrations, such as those from other printers, are minimized.

-  Remove the heatbed protection material.
-  Close the door.
-  On the back of the printer, plug in the mains cable.
-  Turn the power switch ON.

## PASO 19 Final check



Visit the menu  
**Control ->  
Calibrations &  
Tests**

and run the Selftest.



Follow the on-screen instructions, and once all tests pass with a green check mark, you may continue using the printer as usual.



---

---

---

---

---

---

---

---

---

---



---

---

---

---

---

---

---

---

---

---

