

# Tabla de Contenido

## How to replace the side filament sensor (CORE

<b>One L)</b> .....	3
Paso 1 - Introduction .....	5
Paso 2 - Tools necessary for this guide .....	6
Paso 3 - Preparing the printer (part 1) .....	7
Paso 4 - Preparing the printer (part 2) .....	8
Paso 5 - Protecting the heatbed .....	9
Paso 6 - Removing the side panel .....	10
Paso 7 - Disassembling the filament sensor .....	11
Paso 8 - Retirar el sensor de filamento .....	12
Paso 9 - Parts preparation: IR filament sensor .....	12
Paso 10 - Connecting the IR filament sensor .....	13
Paso 11 - Installing the IR filament sensor .....	14
Paso 12 - Mounting the filament sensor .....	15
Paso 13 - Recolocando la tapa lateral .....	16
Paso 14 - Testing the filament sensor (Part 1) .....	17
Paso 15 - Testing the filament sensor (Part 2) .....	17
Paso 16 - Well done! .....	18



# How to replace the side filament sensor (CORE One L)



[help.prusa3d.com/g942495](https://help.prusa3d.com/g942495)

**Escanea el código  
QR para ver la última  
versión de este  
capítulo.**

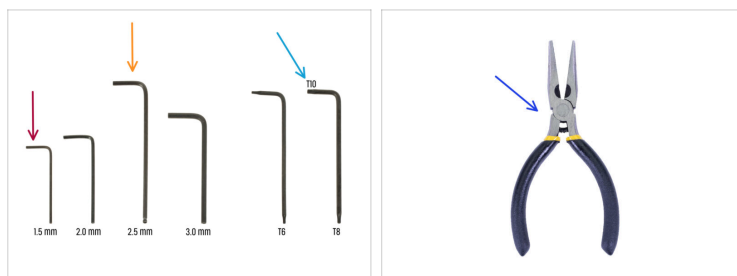


## PASO 1 Introduction



- This guide will take you through the **Side Filament Sensor** replacement on your **Prusa CORE One L**.
- Todas las piezas necesarias están disponibles en nuestra tienda [prusa3d.com](https://prusa3d.com).
- 📌 Ten en cuenta que debes iniciar sesión para tener acceso a la sección de repuestos.

## PASO 2 Tools necessary for this guide



● **Por favor prepara las herramientas para este guía:**

- 2.5mm Allen key
- 1.5mm Allen key
- T10 Torx key
- Needle-nose pliers are recommended as an optional tool.

## PASO 3 Preparing the printer (part 1)



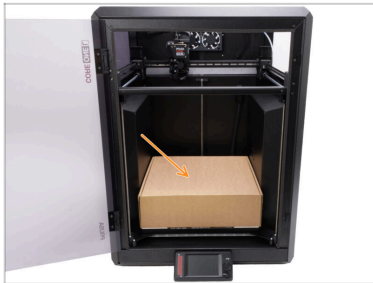
- ◆ Turn the filament sensor off by sliding the Filament-sensor-switch towards you. The "X" on the sensor has to be orange.
- ◆ Close the door.
- ◆ Navigate the screen to **Filament -> Unload filament**
- ◆ Descarga el filamento de la impresora.
- ◆ Retira la bobina de filamento de la impresora.
- ⚠ **Asegúrate de que la impresora se ha enfriado completamente.**
- ◆ On the printer screen, navigate to **Preheat -> Cooldown** and wait for the temperatures to drop to ambient levels. This may take several minutes.

## PASO 4 Preparing the printer (part 2)



- ◆ Open the menu **Control -> Move Axis -> Move Z** and move the heatbed all the way down.
- ◆ Espera hasta que la base calefactable se mueva hacia abajo.
- ◆ Desde la parte posterior de la impresora, desenchufa el cable de la fuente de alimentación.
- ◆ Apaga el interruptor (símbolo "O").

## PASO 5 Protecting the heatbed



**⚠** ¡Antes de continuar, te recomendamos proteger primero la base calefactable!

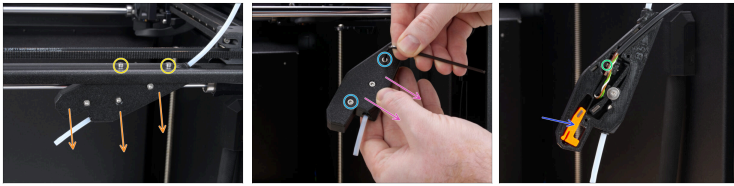
- Use a cardboard box, bubble wrap, or any soft material to cover the heatbed. This will prevent damaging the heatbed/print sheet during the process.

## PASO 6 Removing the side panel



- ◆ Retira los once remaches de nylon que sujetan el panel lateral.
- ◆ Recomendamos utilizar unos alicates de punta fina.
  - ⚠ **Proceed carefully to avoid scratching the side panel.**
- ◆ Aprieta suavemente el remache y tira de la parte superior del remache para sacarlo del panel lateral.
- ◆ Para evitar rayar el panel lateral, recomendamos retirar la parte inferior del remache con la mano.
- 📌 Utiliza los alicates solo si no puedes retirar la parte inferior del remache de nylon con la mano.
- ◆ Retira con cuidado el panel lateral de la impresora.
- ◆ Al retirar el panel, procede con cuidado para evitar dañar el tubo de PTFE.
- ⓘ Has recibido una bolsa con remaches de nylon de repuesto. En caso de que se rompa algún remache al retirarlo, utiliza los de repuesto más adelante cuando vuelvas a colocar el panel lateral.

## PASO 7 Disassembling the filament sensor



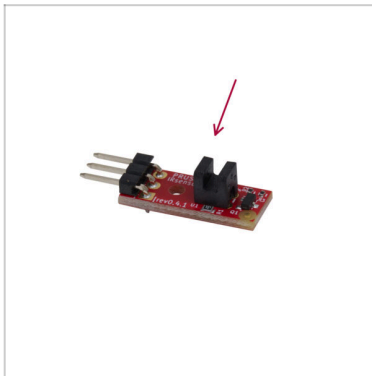
- ✦ Using the 2.5mm Allen key, remove the two M3x8 screws that keep the Filament-sensor attached to the printer frame.
- ✦ Hold the Filament-sensor and lower it so it hangs on the PTFE tube and the IR filament sensor cable.
- ✦ Using the 2.5mm Allen key, remove the two M3x10 screws on the sides.
- ⚠ **Do not remove the middle screw.**
- ✦ Remove the Filament-sensor cover.
- ✦ Note the M2x8 screw that is keeping the IR filament sensor in place.
- ✦ The Filament-sensor-switch is securely lodged in the Filament-sensor. Be careful when moving the part to prevent it from falling out.

## PASO 8 Retirar el sensor de filamento



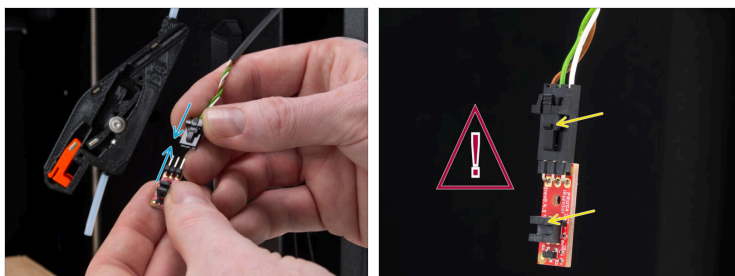
- Using the 1.5mm Allen key, remove the M2x8 screw holding the IR filament sensor in place.
- Once the M2x8 screw is removed, slide the IR filament sensor out of the *Filament-sensor*.
- Disconnect the IR filament sensor from the filament sensor cable connector.

## PASO 9 Parts preparation: IR filament sensor



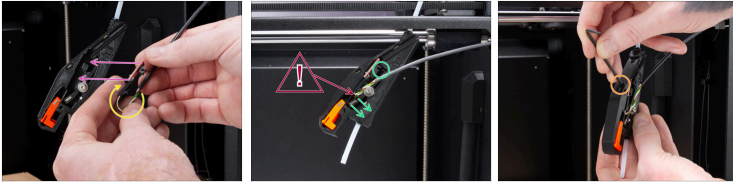
- **Para los siguientes pasos, por favor prepara:**
  - New IR filament sensor (1x)

## PASO 10 Connecting the IR filament sensor



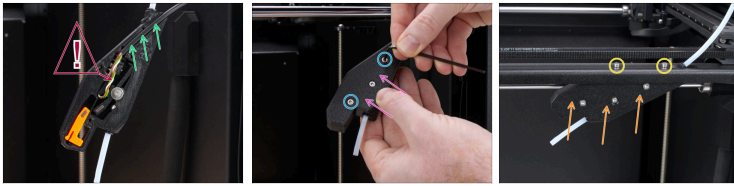
- Plug the new IR filament sensor into the connector as shown in the picture.
  - The safety latch on the connector should face the same direction as the optical gate on the IR filament sensor.
- ⚠ Ensure the connector is correctly oriented and properly plugged in before moving on to the next step!**

## PASO 11 Installing the IR filament sensor



- ◆ Gently bend the IR filament sensor cable so that the optical gate part of the sensor points toward the cable.
- ◆ Insert the IR filament sensor.
  - ⚠ Ensure that the bent filament sensor cable is not blocking the sensor lever! The lever has to be able to move all the way up and down.
- ◆ Move the sensor lever to test that it moves freely and properly fits into the optical gate part of the IR filament sensor.
- ◆ With the IR filament sensor in place, insert the M2x8 screw and use the 1.5mm Allen key to **gently tighten the screw**.

## PASO 12 Mounting the filament sensor



- Guide the cable through the groove in the Filament-sensor and hold it in position when attaching the cover.
- ⚠ **Ensure that no wires from the filament sensor cable will be pinched when attaching the Filament-sensor-cover.**
- Place the Filament-sensor-cover on the Filament-sensor.
- Secure the Filament-sensor-cover in place with the two M3x10 screws.
- Mount the Filament-sensor onto the printer frame.
- Using the 2.5mm Allen key, attach the filament sensor to the printer frame with the two M3x18 screws.

## PASO 13 Recolocando la tapa lateral



- Coloca la cubierta lateral en la impresora.
- Carefully insert the short PTFE tube from the filament sensor through the opening in the side cover handle.
- Fija la cubierta lateral en su lugar utilizando 11 remaches de nylon. Introduce uno en cada orificio indicado y el remache mantendrá la cubierta lateral en su lugar.
- ⓘ **You received a bag with spare nylon rivets.** In case you destroyed any rivets while removing them, use the spare ones when re-attaching the side panel.
- Comienza por la parte superior de la cubierta lateral. Recomendamos sujetar el panel lateral con una mano mientras instala los primeros remaches.
- **Turn the filament sensor on** by sliding the Filament-sensor-switch towards the back of the printer. The "X" on the sensor has to be empty.
- Close the door

## PASO 14 Testing the filament sensor (Part 1)



- Plug in the PSU cable.
- Enciende el interruptor (símbolo "I").
- Close the door.
- On the LCD, navigate to **Info** -> **Sensor Info** and find the **Side Filament Sensor** option.

## PASO 15 Testing the filament sensor (Part 2)



- When **no filament** is inserted, the **Side Filament sensor** will indicate: **NINS / 1**.
- Mount the filament spool on the spool holder
- Insert the filament into the PTFE tube. Ensure it goes through the side filament sensor.
- After a **filament is inserted**, the **Side Filament sensor** will indicate: **INS / 2**
  - **i** **INS** stands for **Inserted**.
  - **i** **NINS** stands for **Not Inserted**.

## How to replace the side filament sensor (CORE One L)

---

### PASO 16 Well done!



- ◆ Congratulations. Your printer is ready to roll!
- ◆ Happy printing.



---

---

---

---

---

---

---

---

---

---



---

---

---

---

---

---

---

---

---

---



---

---

---

---

---

---

---

---

---

---