

# Table of Contents

|  |    |
|--|----|
| <b>How to replace a hotend assembly (CORE One L)</b> ..... | 3  |
| Step 1 - Introduction .....                                | 5  |
| Step 2 - Tools necessary for this guide .....              | 6  |
| Step 3 - Printer preparation (part 1) .....                | 6  |
| Step 4 - Printer preparation (part 2) .....                | 7  |
| Step 5 - Removing the printer top cover .....              | 7  |
| Step 6 - Protecting the heatbed .....                      | 8  |
| Step 7 - Accessing the hotend cables .....                 | 8  |
| Step 8 - Disconnecting the hotend cables .....             | 9  |
| Step 9 - Removing the hotend assembly .....                | 10 |
| Step 10 - Hotend assembly parts preparation .....          | 11 |
| Step 11 - Inserting the new hotend assembly .....          | 12 |
| Step 12 - Checking the nozzle .....                        | 13 |
| Step 13 - Connecting the hotend cables .....               | 14 |
| Step 14 - Guiding the hotend cables .....                  | 14 |
| Step 15 - Attaching the Printhead-cover-left .....         | 15 |
| Step 16 - Attaching the printer top cover .....            | 16 |
| Step 17 - Turning the printer on .....                     | 17 |
| Step 18 - Nozzle set up .....                              | 18 |
| Step 19 - Final check .....                                | 19 |



# How to replace a hotend assembly (CORE One L)



[help.prusa3d.com/g934741](https://help.prusa3d.com/g934741)

**Scan the QR code to  
display the latest  
version of this  
chapter.**

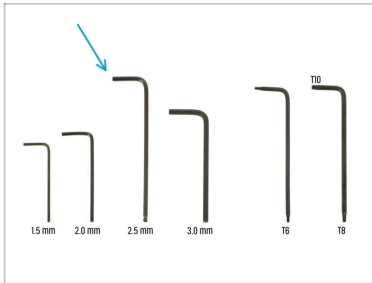


## STEP 1 Introduction



- ◆ This guide will take you through the **hotend assembly replacement** on your Prusa **CORE One L**.
- ⓘ The following instructions are compatible with all Prusa nozzle diameters.
- ◆ All necessary parts are available in our eshop [prusa3d.com](https://prusa3d.com).
- 📌 Note that you have to be logged in to have access to the spare parts section.
- ⓘ Keep all the fasteners that you remove from the printer during the replacement process at hand; they will be reused.

## STEP 2 Tools necessary for this guide



● Prepare these tools for this guide:

● 2.5mm Allen key

## STEP 3 Printer preparation (part 1)



- Close the door.
- Navigate the screen to **Filament** -> **Unload filament**
- Unload the filament from the printer.
- Remove the filament spool from the printer.
- ⚠ **Ensure that the printer has completely cooled down.**
  - On the printer screen, navigate to **Preheat** -> **Cooldown** and wait for the temperatures to drop to ambient levels. This may take several minutes.

## STEP 4 Printer preparation (part 2)



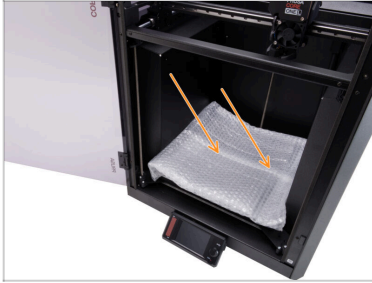
- ◆ Open the menu **Control -> Move Axis -> Move Z** and move the heatbed all the way down.
- ◆ Wait until the heatbed moves down.
- ◆ From the rear side of the printer, unplug the PSU cable.
- ◆ Flip the power switch OFF (symbol "O").

## STEP 5 Removing the printer top cover



- ◆ Open the door and reach in to the front of the top cover.
- ◆ **i** The cover is held in place by a set of plastic security latches.
- ◆ Locate two of the plastic latches at the bottom front of the cover. Squeeze them together simultaneously.
- ◆ Lift the front of the cover just enough to unhook it from the printer and pull the cover 2 cm / 0.8 inch towards you.
- ◆ Remove the top cover from the outside.

## STEP 6 Protecting the heatbed



**⚠** Before proceeding any further, it is recommended to protect the heatbed first!

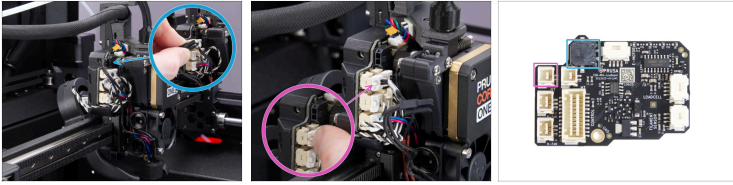
- Use a piece of fabric, cardboard, bubble wrap, or any soft material to cover the heatbed. This will prevent damaging the heatbed/print sheet during the process.

## STEP 7 Accessing the hotend cables





- Adjust the printer so you have access to the left side of the Nextruder.
- Using the 2.5mm Allen key, remove the M3x10 screw on top of the Printhead-cover-left (cover).
- Unhook the cover from the bottom slot and remove the cover.

## STEP 8 Disconnecting the hotend cables



 Each connector has a safety latch. **It is necessary to press the latch before disconnecting.** Otherwise, the connector may get damaged.

-  Press the safety latch to disconnect the hotend heater cable.
-  Press the safety latch to disconnect the hotend thermistor cable.

## STEP 9 Removing the hotend assembly



- ✦ Unhook the hotend cables from the plastic cable guide behind the two thumb screws.
  - ✦ Hold the hotend with your hand to prevent it from falling down.
  - ✦ Use your other hand to loosen the two thumb screws with a few turns. **Do not remove them completely.**
  - ✦ Pull the hotend assembly down from the heatsink.
- ⓘ We recommend discarding the old hotend immediately to avoid confusing it with the new one.

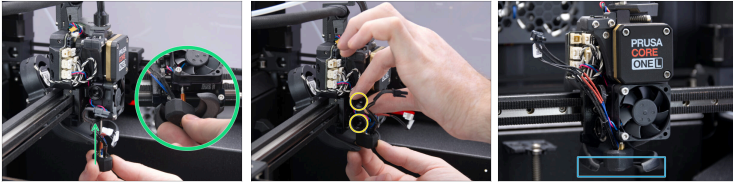
## STEP 10 Hotend assembly parts preparation



- ◆ **For the following steps, prepare:**
- ◆ Hotend assembly (1x)
- ⓘ The CORE One L hotend assembly has a nextruder silicone sock installed by default. It is optional, and you can remove it at any time.
- ◆ For more information about the silicone sock, read this article: [Nextruder silicone sock](#).

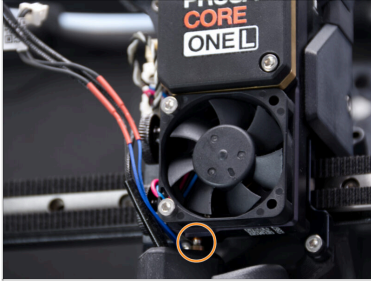
📌 The default nozzle on the CORE One L is the 0.4mm HF, (High Flow version) labeled CHT

## STEP 11 Inserting the new hotend assembly



- ◆ Locate the hole on the bottom of the extruder heatsink and insert the hotend assembly.
- ⓘ Ensure that there is enough free space between the new hotend assembly and the fan shroud.
- ◆ Once the new hotend assembly is completely inserted into the nexttruder, tighten both thumbscrews.
- ◆ Double-check that the hotend is fully inserted into the heatsink. It has to align with the fan shroud.

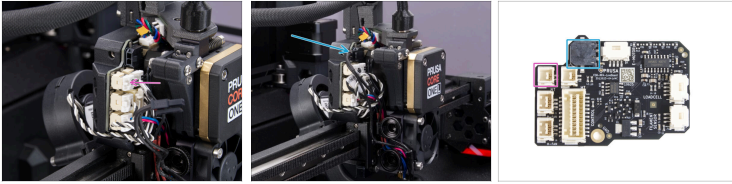
## STEP 12 Checking the nozzle



- ✦ **Verify that the nozzle is fully inserted** into the heatsink. The copper ring on the nozzle has to be barely visible.
- ⚠ **If not inserted properly, the nozzle can cause poor heat transfer and potentially lead to nozzle clogs.**
- ⓘ To adjust the nozzle position, loosen the thumbscrews and push the hotend assembly up. Then tighten the thumbscrews again.

---

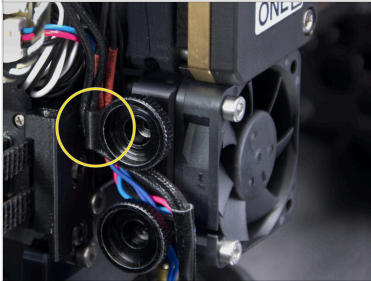
## STEP 13 Connecting the hotend cables



- ◆ Connect the hotend thermistor cable to the top left slot on the love board.
- ◆ Connect the hotend heater to the black slot on the upper part of the love board.

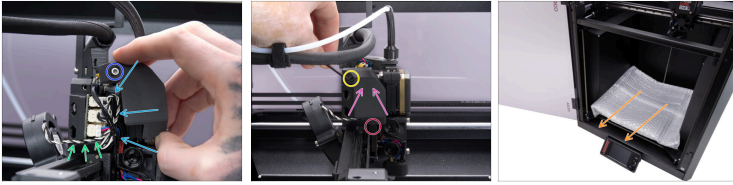
---

## STEP 14 Guiding the hotend cables



- ◆ Insert the hotend cables behind the plastic cable guide hook. Guide the thermistor cable first, then the hotend heater cable.

## STEP 15 Attaching the Printhead-cover-left



- ◆ Organize the cables to ensure they are not sticking out to prevent pinching them once you attach the Printhead-cover-left (cover).
- ◆ Ensure that the print fan cable is led through the ridge in the Printhead-cover-rear.
- ◆ Tip: Prepare the M3x10 screw and set it up in the cover before attaching the cover.
- ◆ Insert the cover into the bottom slot in the Printhead-cover-rear first.
- ◆ Place the cover onto the nextruder.
- ◆ Fix the cover in place using the M3x10 screw.
- ◆ Remove the protective material from the heatbed.


## STEP 16 Attaching the printer top cover






- Place the cover on the printer with the ventilation grille in the front and slide the cover towards the back.
- Align the cover so that the two plastic latches at the rear of the cover slide in and lock the cover in place.
- Once the back is secured in place, lower the front of the cover and gently push the cover down, so the front latches will snap in place.

## STEP 17 Turning the printer on



 **Make sure that the printer is placed in a stable place where no ambient vibrations are transmitted (for example, where other printers are printing).**

-  Close the door.
-  From the rear side of the printer, plug in the PSU cable.
-  Turn the power switch ON (symbol "I").

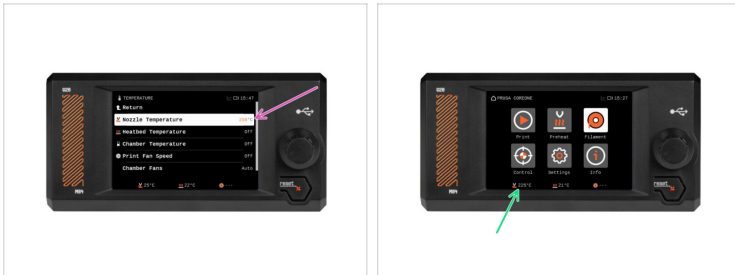
## STEP 18 Nozzle set up



**⚠** This step only applies if you changed your nozzle diameter or type. If you did not, continue to the next step.

- Navigate the screen to **Settings -> Hardware -> Printhead**.
- Select the **nozzle diameter** you are using (e.g. 0.25 / 0.3 / 0.4 / 0.5 / 0.6 / 0.8)
  - ① On CORE One L, the 0.40 mm is the default nozzle.
- Turn on the **silicone sock** option if applicable.
- Select the **nozzle type**.
  - ① On CORE One L, the high flow nozzle is the default version.

## STEP 19 Final check



- ◆ To verify the correct connection of the cables, navigate the screen to **Control -> Temperature -> Nozzle Temperature** and set it to above 200°C.
- ◆ Return to the main screen and check the bottom bar to ensure the temperature is rising as expected.



**Great job!** You just replaced the hotend assembly on your PRUSA CORE One L.



---

---

---

---

---

---

---

---

---

---



---

---

---

---

---

---

---

---

---

---

