

Obsah

How to tension the belts (HT90)	3
Krok 1 - Úvod	4
Krok 2 - Nářadí potřebné k této kapitole	5
Krok 3 - Příprava tiskárny	6
Krok 4 - Positioning the belt tension meter	7
Krok 5 - Napnutí řemenů	8
Krok 6 - Hotovo!	9

How to tension the belts (HT90)

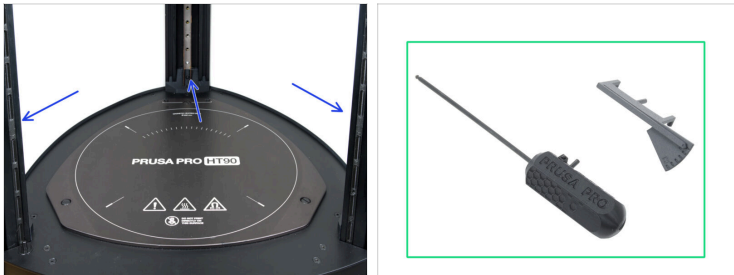


help.prusa3d.com/g901158

Naskenujte QR kód
pro nejnovější verzi
kapitoly.



KROK 1 Úvod



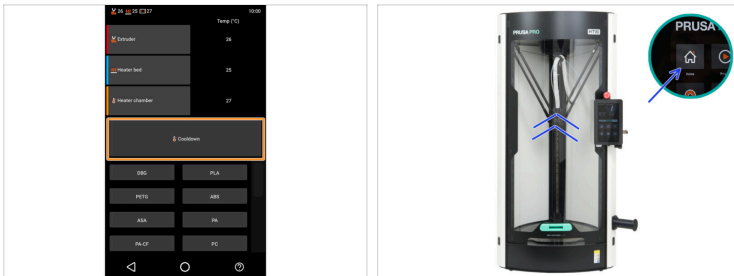
- ◆ This guide will take you through the process of **tensioning all belts** on the **Prusa Pro HT90**.
- ◆ This procedure requires specific tools provided in the **Prusa Pro HT90 Maintenance Kit**, available in our e-shop on prusa3d.com.
- ⓘ Pro přístup do sekce náhradních dílů musíte být přihlášení.

KROK 2 Nářadí potřebné k této kapitole



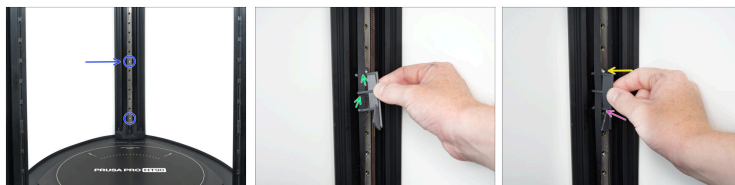
- **Pro následující kroky si prosím připravte:**
 - ◆ 2.5mm Allen key *included in the maintenance kit*
 - ◆ Belt tension meter *included in the maintenance kit*
 - ◆ Bílý popisovač (volitelný)
- ⓘ You can use it later to mark a more visible reference point for the ideal position on the belt tension meter.

KROK 3 Příprava tiskárny



- 🟠 **Cool down the printer.** Go to *More* -> *Temperature* -> *Cooldown*. Wait till the printer is cooled down!
- ⚠️ **Do not open the printer until the printer is fully cooled down to ambient temperature.**
- 🟠 **Move the print head to the home position.** On the printer's main screen, hit *Home* and wait until all axes are fully homed.
- ⚠️ **Do not open the door during this process.**

KROK 4 Positioning the belt tension meter



- i** The process is shown on the rear belt for best access but applies to all three belts.
- Locate the second silver screw from the bottom on the linear rail.
- Take the belt tension meter and position it so the indicator faces downward.
- Guide the belt under the middle pin and over the upper pin.
- i** It doesn't matter whether you choose the left or right belt guide.
- Make sure the upper pin is aligned with the second silver screw.
- Insert the lower pin under the belt.
- Maintain the belt tension meter's position, aligned with the second silver screw.

KROK 5 Napnutí řemenů

How to tension the belts (HT90)



- Take a close look at the belt tension meter and check the position of the indicator showing the belt tension level.
 - ◆ The **optimal position is centered** between H (too tight) and L (too loose).
- ⓘ Tip: Use a white paint marker to mark the ideal position for better visibility.
- **If the indicator is not in the optimal position:**
 - ◆ Use the 2.5mm Allen key to tighten or loosen the screw.
 - ◆ After every quarter to half turn, check the position of the indicator.
 - Once the indicator reaches the optimal position, leave the screw as it is.
 - **Use the same procedure for the remaining belts.**

KROK 6 Hotovo!



- ◆ **Congratulations!**
You have successfully adjusted the belt tension on the Prusa Pro HT90.
- ◆ You can now use your printer as usual.
