

Tabla de Contenido

How to replace the desiccant in the Prusa Pro Filament Drybox	3
Paso 1 - Introduction	4
Paso 2 - Tools necessary for this guide	4
Paso 3 - Removing the desiccant cartridge	5
Paso 4 - Opening the desiccant cartridge	5
Paso 5 - Removing the desiccant from the cartridge	6
Paso 6 - Desiccant packets: parts preparation	6
Paso 7 - Inserting the desiccant packets into the cartridge	7
Paso 8 - Covering the desiccant cartridge	8
Paso 9 - Installing the desiccant cartridge into the Drybox	9

How to replace the desiccant in the Prusa Pro Filament Drybox



help.prusa3d.com/g889262

Escanea el código
QR para ver la última
versión de este
capítulo.

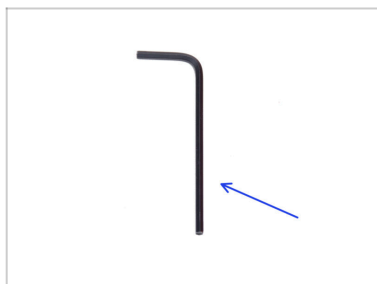


PASO 1 Introduction



- This guide will help you **replace the desiccant in the Prusa Pro Filament Drybox**.
- Todas las piezas necesarias están disponibles en nuestra tienda prusa3d.com.
- ⓘ Ten en cuenta que debes iniciar sesión para tener acceso a la sección de repuestos.
- ⚠ **Do not open the desiccant package for the Prusa Pro Filament Drybox yet. Wait for instructions.**
- Avoid replacing the desiccant in a damp or moist area.

PASO 2 Tools necessary for this guide



- **Para esta guía, prepara:**
- 2.0mm Allen key

PASO 3 Removing the desiccant cartridge



- ◆ Open the Drybox.
- ⓘ If you have a filament spool inside, it is not required to remove it.
- ◆ Pull the desiccant cartridge out of the Drybox.
- ◆ Keep the Drybox aside for a while.

PASO 4 Opening the desiccant cartridge



- ◆ Notice the two M3 screws spaced apart that secure the handle on the desiccant cartridge.
 - ◆ On one side, loosen these two screws using a 2.0mm Allen key.
- ◆ Flip the desiccant cartridge over.
- ◆ Loosen and remove the two adjacent M3 screws.
- ◆ Remove the handle from the desiccant cartridge.

PASO 5 Removing the desiccant from the cartridge



Remove all the desiccant packets from the cartridge.

There are five packets inside by default.

Discard them to avoid confusion with new ones.

PASO 6 Desiccant packets: parts preparation



Para los siguientes pasos, por favor prepara:

Desiccant for Prusa Pro Filament Drybox bag (1x) including desiccant packet

Open the bag by cutting just below the seal to avoid cutting the desiccant packets inside the bag.

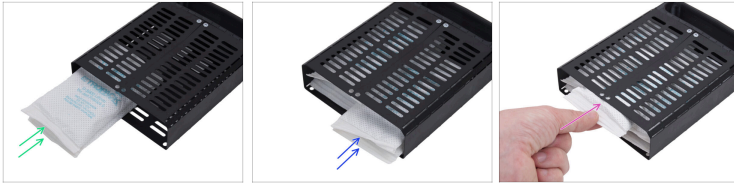
Desiccant packet (5x)

Humidity indicator card (1x)

Check the color of the dots on the humidity indicator card:

If the dots are blue, the desiccant is dry and ready to use.







PASO 7 Inserting the desiccant packets into the cartridge



- Put the two desiccant packets, stacked together, into the cartridge on one side.
- Likewise, insert the other two desiccant packets beside them towards the other side.
- Insert the remaining desiccant packet on top of them.

PASO 8 Covering the desiccant cartridge



-  **Ensure that no desiccant packet is sticking out. Push them further in.**
-  **Put the handle in front of the cartridge, ensuring the correct orientation:**
 -  The pair of adjacent holes in the handle must align with the pair in the cartridge.
 -  Insert the handle into the cartridge and secure it with two M3x10b countersunk screws.
-  Expect more resistance when screwing into plastic.
-  Flip the cartridge over and secure the other side of the handle with two M3x10b countersunk screws.

PASO 9 Installing the desiccant cartridge into the Drybox



- Slide the desiccant cartridge back into the left side of the Prusa Pro Drybox. Ensure correct orientation:
 - The side of the desiccant cartridge with the more widely spaced screws must face inside the Drybox.
- That's it!** Congratulations, you just successfully replaced the desiccant in your Drybox.
