

# Table of Contents

<b>How to change the xLCD (XL)</b> .....	3
Step 1 - Introduction .....	4
Step 2 - Tools necessary for this chapter .....	4
Step 3 - Printer preparing .....	5
Step 4 - Removing the xLCD .....	5
Step 5 - xLCD assembly versions .....	6
Step 6 - Version A: xLCD cables .....	6
Step 7 - Version B: xLCD cables .....	7
Step 8 - Version C: xLCD cables .....	7
Step 9 - xLCD: parts preparation .....	8
Step 10 - Version A & B: xLCD preparation .....	8
Step 11 - Version A & B: xLCD cables .....	9
Step 12 - Version C: xLCD cables .....	10
Step 13 - xLCD mounting: parts preparation .....	10
Step 14 - Mounting the xLCD .....	11
Step 15 - Final check .....	11



# How to change the xLCD (XL)



[help.prusa3d.com/g793755](https://help.prusa3d.com/g793755)

Scan the QR code to display the latest version of this chapter.

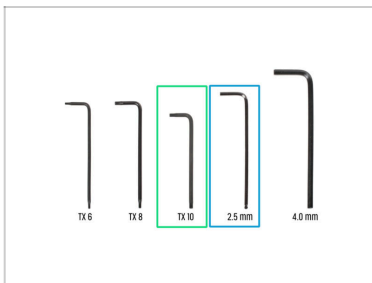


## STEP 1 Introduction



- ◆ This guide will take you through the replacement of the **xLCD assembly** on the **Original Prusa XL**.
- ⓘ The following instructions are compatible with all Prusa XL printers.
- ◆ All necessary parts are available in our eshop [prusa3d.com](https://prusa3d.com).
- ⓘ Note that you have to be logged in to have access to the spare parts section.

## STEP 2 Tools necessary for this chapter



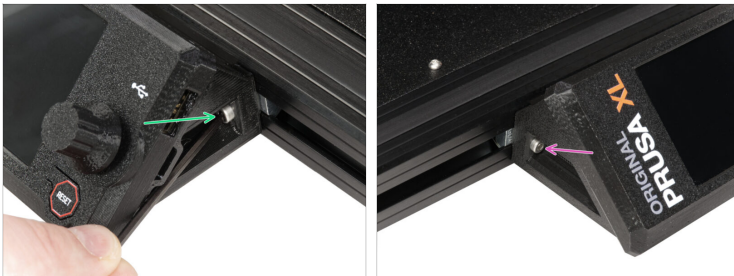
- ◆ **For this chapter, please prepare:**
- ◆ T10 Torx key
- ◆ 2.5mm Allen key

### STEP 3 Printer preparing



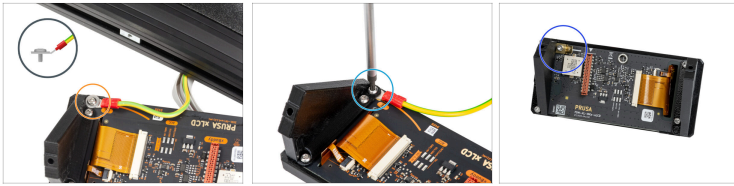
- On the back of your printer. Turn the power switch OFF (symbol "O").

### STEP 4 Removing the xLCD







- From the front of the printer:
- Remove the M3x10 (M3x16) screw from the right side of the xLCD.
- Remove the M3x10 (M3x16) screw from the left side of the xLCD.

## STEP 5 xLCD assembly versions






 Take a look at the xLCD, there are three variants:

-  **Version A:** with an M3 washer under the screw
  -  **Version B:** without the washer under the screw
  -  **Version C:** faston on the top left (injection molded xLCD)
-  Scroll to your version.

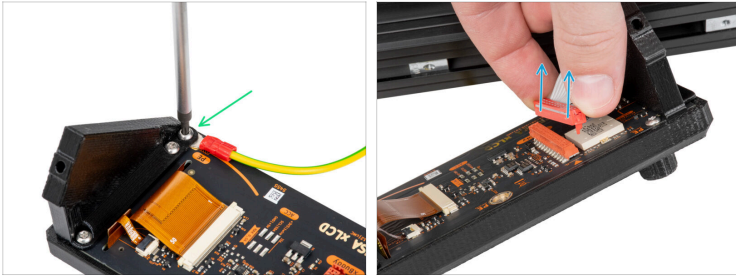
## STEP 6 Version A: xLCD cables



 If you have a different version, skip to the next step.

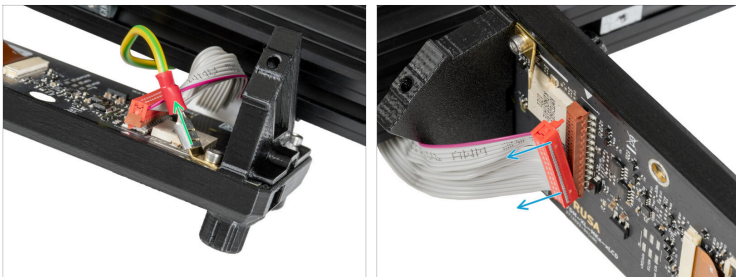
-  Disconnect the xLCD cable from the slot on the xLCD board.
-  Remove the M3x8rT screw and the M3 washer using a T10 Torx key.

## STEP 7 Version B: xLCD cables



- ① If you have a different version, skip to the next step.
- Remove the M3x8rT screw.
- Disconnect the xLCD cable from the slot on the xLCD board.

## STEP 8 Version C: xLCD cables



- ① If you have an injection molded xLCD, use this procedure to remove the cables.
- Remove the earthing connector fully from the PE faston.
- Disconnect the xLCD cable from the slot on the xLCD board.

## STEP 9 xLCD: parts preparation



- ◆ **For the following steps, please prepare:**
- ◆ xLCD assembly (1x)
- ⓘ **Version A & B:** continue to the next step.
- ⓘ **Version C:** continue to the **Version C: xLCD cables**

---

## STEP 10 Version A & B: xLCD preparation



- ◆ From the back side of the xLCD assembly:
- ◆ Using a T10 Torx key, remove the 3x8sT and the PE faston from the xLCD. **Keep the screw for the next steps.**

## STEP 11 Version A & B: xLCD cables



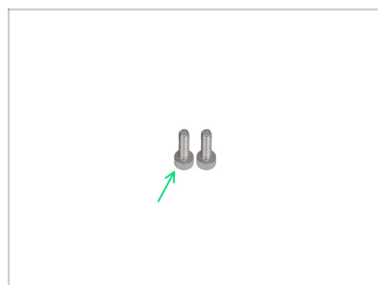
- ◆ From the front of the printer, place the xLCD assembly close to the lower front aluminum extrusion where are the xLCD cables.
- ◆ Using the 3x8sT screw, connect the PE cable to the PE hole on the xLCD board. See the detail showing the correct position of the cable connector.
  - ⓘ The connector will bend slightly when tightened. Don't worry, it's fine.
- ◆ Connect the xLCD cable to the slot on the xLCD board.
  - ⓘ There is a latch on the xLCD cable connector, which must be facing the triangle symbol on the board. See the detail.
- ◆ Push the xLCD cable connector to fully connect to the xLCD.

## STEP 12 Version C: xLCD cables



- From the front of the printer, place the xLCD assembly close to the lower front aluminum extrusion where are the xLCD cables.
- Connect the xLCD cable to the slot on the xLCD board.
- ⓘ There is a latch on the xLCD cable connector, which must be facing the triangle symbol on the board. See the picture.
- Push the xLCD cable connector to fully connect to the xLCD. Hold the xLCD cover.
- Push the earthing connector fully into the PE faston.

## STEP 13 xLCD mounting: parts preparation



- **For the following steps, please prepare:**
- M3x10 screw (2x)

## How to change the xLCD (XL)

### STEP 14 Mounting the xLCD



- Align the xLCD assembly with the nuts in the front aluminum extrusion.
- Insert and tighten the M3x10 (M3x16) screw from the left side of the xLCD.
- Insert and tighten the M3x10 (M3x16) screw from the left side of the xLCD.
- Good job! The xLCD is ready.

### STEP 15 Final check



- On the back of your printer. Turn the power switch ON (symbol "I").
- Try the control wheel if everything works.



---

---

---

---

---

---

---

---

---

---



---

---

---

---

---

---

---

---

---

---

