

Tabla de Contenido

Packing the XL Enclosure for return - Original

Packing material	3
Paso 1 - Introduction	4
Paso 2 - Before you get started	5
Paso 3 - Original packing material	6
Paso 4 - Profiles & Steel Sheets box - First part	7
Paso 5 - Profiles & Steel Sheets box - Second part	7
Paso 6 - Bellows set box	8
Paso 7 - Clear Plastic Sheets box - First part	8
Paso 8 - Clear Plastic Sheets box - Second part	9
Paso 9 - Fasteners & Accessories box	9
Paso 10 - Packing layer by layer	10
Paso 11 - Sealing the box	11
Paso 12 - All done!	12

Packing the XL Enclosure for return - Original Packing material



help.prusa3d.com/g701950

Escanea el código
QR para ver la última
versión de este
capítulo.



PASO 1 Introduction



- ◆ This guide will outline how to prepare and pack down your Original Prusa XL Enclosure for return or repair using the packing material we supplied with it.
- ⓘ Be sure to read each step carefully! Colors on the Hexagon bullet points correspond to markers in the photos.

PASO 2 Before you get started



- ◆ Contact us using following channels:
 - ◆ Usa nuestro chat 24/7 en shop.prusa3d.com
 - ◆ Escríbenos un correo a info@prusa3d.com
- ⓘ Before you start packing it down, get out your phone or camera and take pictures of the Enclosure before and during the packing process.
- ◆ Make sure the Serial Number sticker is present in the place indicated. If it is not present, please contact support right away.

PASO 3 Original packing material



● Here we will outline the required packing material:

● Black packing foil

● Fragile sticker - Can be downloaded [here](#).

● Packing tape

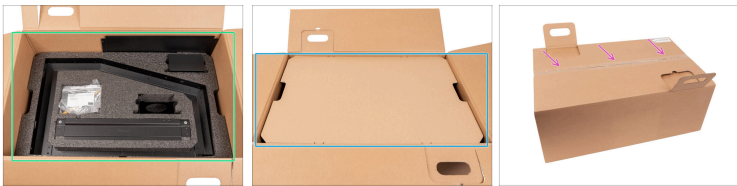
ⓘ You will also need the original boxes and padding.

PASO 4 Profiles & Steel Sheets box - First part



- On the bottom of the Profiles & Steel Sheets box place the back panel on the box padding.
- As the first layer, place the same padding as in the picture, filled with metal sheets.
- Make sure that the top right corner is empty. This space will be filled with the second layer.

PASO 5 Profiles & Steel Sheets box - Second part



- As the second layer, place the same padding as in the picture, filled with metal sheets.
- Place the cardboard & foam padding layer on top of the second layer to prevent movement and damage to the parts during transport.
- Close the Profiles & Steel Sheets box and secure it with the packing tape.
- Leave the box now, let's pack the other parts.

PASO 6 Bellows set box



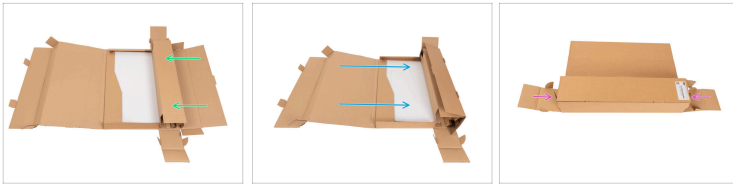
- Place the bellows in the bottom of the Bellows set box.
- Pack the Lower bellows holder and Upper magnet covers on top of the Bellows set box.
- i** You can use the packing tape to secure the box and prevent it from being opened.
- Close the box.

PASO 7 Clear Plastic Sheets box - First part



- Place the front panel on the Clear Plastic Sheets box.
- i** **To prevent the panels from being scratched**, place a few sheets of paper or bubble wrap between the plastic panels.
- Place the remaining panels (both side panels + top panel) on the front panel.
- Secure the sheets with folded cardboard from the left and right sides.

PASO 8 Clear Plastic Sheets ^{material} box - Second part



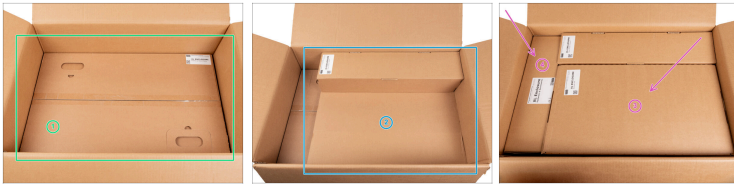
- ◆ Fold the right side of the box.
- ◆ Fold the left side of the box.
- ◆ Fold and close the both sides of the Clear Plastic Sheets box.
- ⓘ You can use the packing tape to secure the box and prevent it from being opened.
- ◆ Leave the box now, let's pack the other parts.

PASO 9 Fasteners & Accessories box



- ◆ Pack all the fasteners and additional parts of the XL Enclosure in a smaller cardboard box named **XL Enclosure Fasteners & Accessories** that will fit within the Enclosure box.
- ⓘ You can use the packing tape to secure the box and prevent it from being opened.
- ◆ Close the box.

PASO 10 Packing layer ^{material} by layer



- ◆ As a first layer, place the **Profiles & Steel Sheets box** into the Original XL Enclosure box.
- ◆ As a second layer, place the **Clear Plastic Sheet box** inside the Original XL Enclosure box. Look at the picture.
- ◆ Now place the **Bellows set box** and the **Fasteners & Accessories box** inside the Original XL Enclosure box. Look at the picture.

PASO 11 Sealing the box



- i** Before sealing the box make sure you have documented the packing process, sent it to our shipping department, and received approval!
- !** **Damage that occurs to unapproved shipments is liable to be covered to the sender.**
- Close the Original Prusa XL Enclosure box and secure it with the packing tape.
- Envuelve la caja con rollo de plástico (film transparente) para hacerla más resistente y protegerla de cualquier daño causado por el agua.
- Coloca la etiqueta "Fragil" en al menos dos lados de la caja.

PASO 12 All done!



- That is all for the packing process! Proceed with emailing our shipping department, providing pictures of the packing process and the service list.
- ⓘ You can contact the shipping department by either replying to their initial email or just emailing info@prusa3d.com.
- Once the packing process has been approved, you will receive a shipping label for the return.
