

# Table of Contents

<b>How replace the CoreXY Cover Rear (Original Prusa XL)</b> .....	3
Step 1 - Introduction .....	4
Step 2 - Tools necessary for this chapter .....	5
Step 3 - CoreXY Cover: parts preparation .....	5
Step 4 - Back cover disassembly .....	6
Step 5 - Core XY cover detaching .....	6
Step 6 - Attaching the CoreXY cover .....	7
Step 7 - New CoreXY cover securing .....	7
Step 8 - Well done! .....	8



# How replace the CoreXY Cover Rear (Original Prusa XL)



[help.prusa3d.com/g656907](https://help.prusa3d.com/g656907)

Scan the QR code to  
display the latest  
version of this  
chapter.

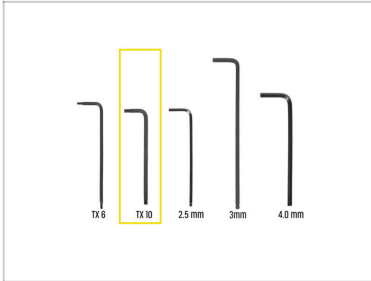


## STEP 1 Introduction



- ◆ This guide will take you through the **replacement of the CoreXY Cover** on the **Original Prusa XL**.
- ⓘ The following instructions are compatible with all Original Prusa XL.
- ◆ **Check out the images and descriptions to identify which version your printer has:**
  - ◆ **OLD XY Core cover:** a full metal sheet with five holes on its bottom edge. If you have this version of the part, **follow the instructions in the manual**.
  - ◆ **NEW XY Core cover:** metal sheet with a perforated pattern of hexagonal holes. If your printer has this version, you already have the latest version and there is no need to continue with the guide.
- ◆ All necessary parts are available in our eshop [prusa3d.com](https://prusa3d.com).
- ⓘ Note that you have to be logged in to have access to the spare parts section.
- ⚠ **Do not throw away any of the removed fasteners. You will need them again.**

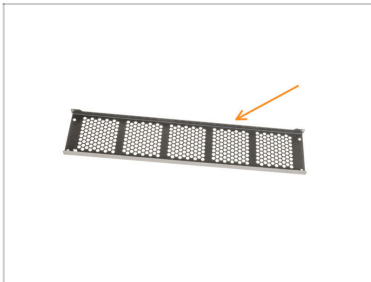
## STEP 2 Tools necessary for this chapter



- **For the next steps, please prepare:**
- T10 Torx key or T10 Torx screwdriver

---

## STEP 3 CoreXY Cover: parts preparation



- **For the following steps, please prepare:**
- New CoreXY Cover Rear (1x)

## STEP 4 Back cover disassembly



- Using a T10 Torx key, loosen four M3x8bT screws.
- Using a T10 Torx key, loosen two M3x8bT screws from the upper side of the cover.
- Unplug the PE cable from the cover.

---

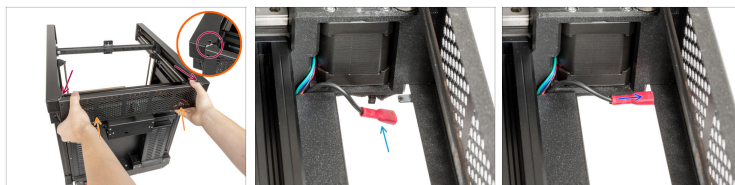
## STEP 5 Core XY cover detaching




**⚠ Caution: The sheet metal part's edges may be sharp, so handle with care.**

- Using both hands, carefully remove the CoreXY cover from the printer.

## STEP 6 Attaching the CoreXY cover



Using both hands, attach the new CoreXY cover.

 **The CoreXY cover must fit under the side metal sheets on both sides.**

Locate the PE cable near the right CoreXY motor (from the back of the printer).

Connect the PE cable all the way to the faston.

---

## STEP 7 New CoreXY cover securing



Using the T10 Torx key, tighten four M3x8bT screws to secure the cover.

From the upper side of the CoreXY cover, tighten two M3x8bT screws.

## How replace the CoreXY Cover Rear (Original Prusa XL)

---

### STEP 8 Well done!



- ◆ Good job! The CoreXY Cover Rear is replaced.



---

---

---

---

---

---

---

---

---

---



---

---

---

---

---

---

---

---

---

---



---

---

---

---

---

---

---

---

---

---



---

---

---

---

---

---

---

---

---

---