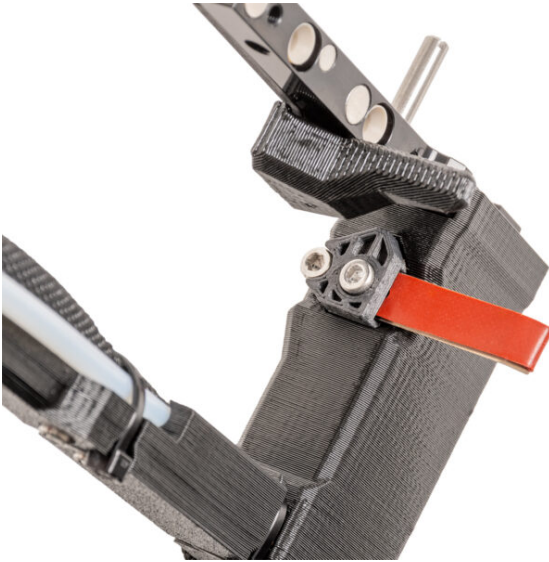


Table of Contents

How to replace the rubber band on Original

Prusa XL (Multi-tool)	3
Step 1 - Introduction	4
Step 2 - Tools necessary for this chapter	5
Step 3 - Preparing the printer	6
Step 4 - Nextruder nozzle seal	7
Step 5 - Nozzle seal disassembly	8
Step 6 - Removing the rubber band	8
Step 7 - New rubber band: parts preparation	9
Step 8 - Rubber band attaching	10
Step 9 - Nozzle seal assembly	10
Step 10 - Nozzle seal attaching	11
Step 11 - Nozzle seal heigh calibration	12
Step 12 - Well done!	12

How to replace the rubber band on Original Prusa XL (Multi-tool)

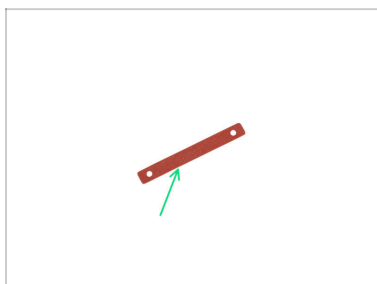


help.prusa3d.com/g655235

Scan the QR code to
display the latest
version of this
chapter.

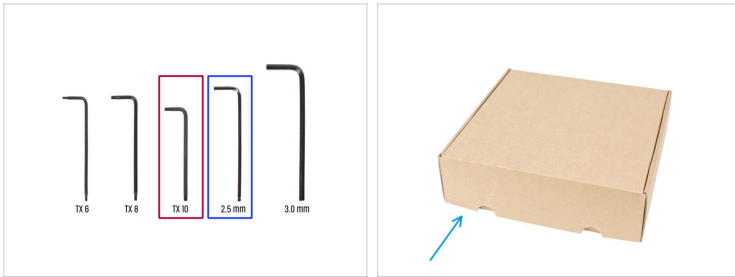


STEP 1 Introduction



- ◆ This guide will take you through the replacing of the **Nozzle seal rubber band** on the **Original Prusa XL**.
- ⓘ These instructions can also be used for an older version of the nozzle seal. The plastic parts are slightly different in shape, but the screws and procedure are the same.
- ◆ Nozzle seal rubber band is available in our eshop prusa3d.com.
- ⓘ The following instructions are compatible with the **Original Prusa XL Dual-head** and **Original Prusa XL Five-head**.
- ◆ The nozzle seal rubber band is shipped with the Original Prusa XL. And it is available in our e-shop prusa3d.com.
- ⓘ Note that you have to be logged in to have access to the spare parts section.

STEP 2 Tools necessary for this chapter



● **For this chapter, please prepare:**

● TX 10 Torx key (screwdriver)

● 2.5mm Allen key

● A cardboard box for use as a heatbed protection during the assembly. *Hint: use the Prusament box.*

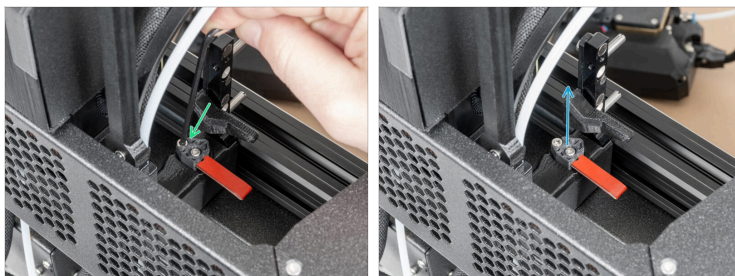
How to replace the rubber band on Original Prusa XL (Multi-tool)

STEP 3 Preparing the printer



- Before you proceed, it is recommended to protect the heatbed.
- Make sure the heatbed is cooled down to ambient temperature. Place the empty cardboard box approximately to the front center part of the heatbed.

STEP 4 Nextruder nozzle seal



- ① These instructions can also be used for an older version of the nozzle seal. The plastic parts are slightly different in shape, but the screws and procedure are the same.
- ◆ Detach the Nextruder and place it on a cardboard heatbed protection.
- ① Any Nextruder where replacement of the nozzle sealing band is required.
- ◆ Unscrew the M3x30 screw holding the Nozzle seal using a 2.5 mm Allen key.
- ◆ Remove the Nozzle seal with the spring.

(Multi-tool)

STEP 5 Nozzle seal disassembly



- Remove the spring from the nozzle seal assembly. **Do not throw it away!**
- Remove the M3x30 screw from the Nozzle seal assembly. **Do not throw it away!**
- Untighten the M3x8rT screw.
- Leave the M3x8rT screw in the xl-dock-cable-router-parking-plate-cap.

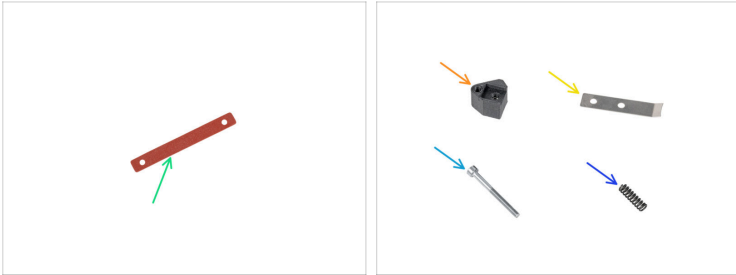
STEP 6 Removing the rubber band



- Pull out the second layer of the rubber band from the M3x8rT screw.
- Pull out the TC-parking-plate. **Do not throw it away!**
- Pull out the second layer of the rubber band from the M3x8rT screw. Throw away the damaged rubber band.

(Multi-tool)

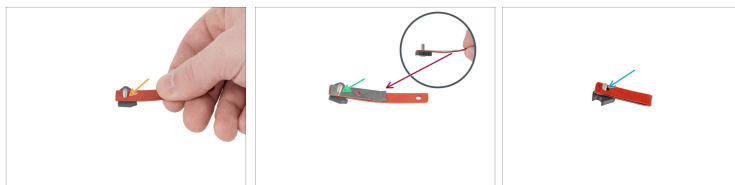
STEP 7 New rubber band: parts preparation



⬛ **For the next steps, please prepare:**

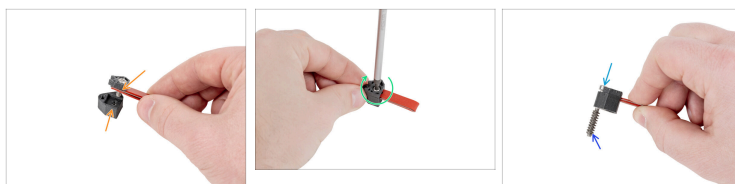
- 🟢 New rubber band (1x)
- 🟠 xl-dock-cable-router-parking-plate-support (1x)
- 🟡 TC-parking-plate (1x)
- 🟡 M3x30 screw (1x)
- 🟢 Spring (1x)

(Multi-tool)
STEP 8 Rubber band attaching



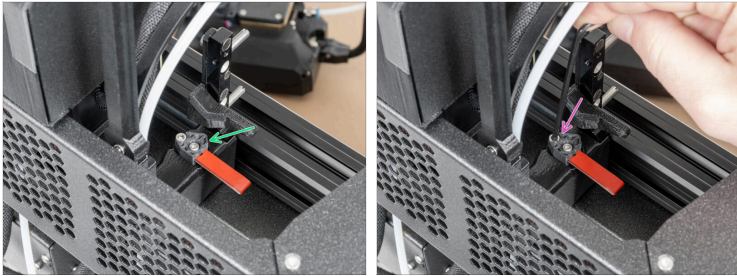
- 🟠 Slide one end of the rubber band onto the M3x8rT screw.
- 🟢 Slide the TC-parking-plate onto an M3x8rT screw.
- ⚠️ **The TC-parking-plate has to face up with the bent part. See the picture.**
- 🟢 Slide the second end of the rubber band onto the M3x8rT screw.

STEP 9 Nozzle seal assembly



- 🟠 Attach the xl-dock-cable-router-parking-plate-cap with the new rubber band onto the xl-dock-cable-router-parking-plate-support.
- 🟢 Tighten the M3x8rT screw using a T10 Torx screwdriver.
- 🟢 Insert the M3x30 screw through the xl-dock-cable-router-parking-plate-support.
- 🟢 Attach the spring onto the M3x30 screw.
- ⬛ Well done, the assembly is ready to be installed.

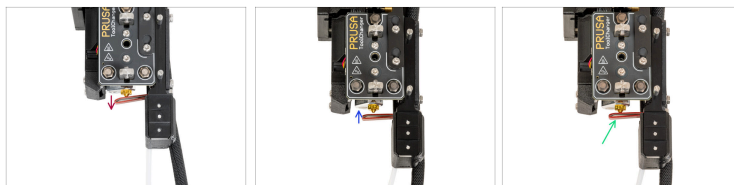
STEP 10 Nozzle seal attaching



- ◆ Insert the nozzle seal (with the spring) into the dock.
- ◆ Using a 2.5 mm Allen key, tighten the screw so that the head of the screw is 1 mm above the dock.
- ⓘ The current nozzle seal position is temporary, the exact height will be set in the next steps.

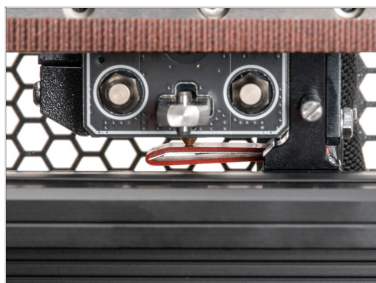
(Multi-tool)

STEP 11 Nozzle seal height calibration



- If the Nozzle seal is too low or too high, we need to reposition its height.
- Using a 2.5 mm Allen key:
 - Turn the M3x30 screw clockwise to set the Nozzle seal lower.
 - Turn the M3x30 screw counterclockwise to set the Nozzle seal higher.
- The correct position of the Nozzle seal is that the Nozzle seal isn't bent and it is touching the nozzle.

STEP 12 Well done!



- The rubber band on the Nozzle seal is replaced. Happy printing!
