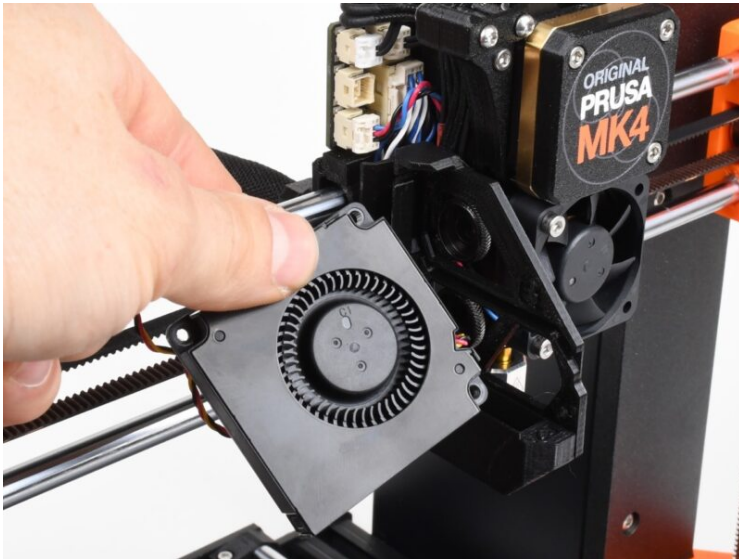


Tabla de Contenido

Cómo reemplazar un ventilador de impresión

(MK4 / MK3.9)	3
Paso 1 - Introducción	4
Paso 2 - Herramientas necesarias para este capitulo	4
Paso 3 - Preparation	5
Paso 4 - Loveboard cover removal	5
Paso 5 - Extracción del ventilador	6
Paso 6 - Parts preparation: Print fan	6
Paso 7 - Print fan cable management	7
Paso 8 - Print fan installation	8
Paso 9 - Finishing the fan installation	8
Paso 10 - Hecho	9

Cómo reemplazar un ventilador de impresión (MK4 / MK3.9)



help.prusa3d.com/g641196

Escanea el código QR para ver la última versión de este capítulo.

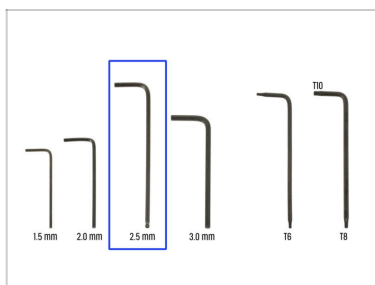


PASO 1 Introducción



- ◆ This guide will take you through the **Print fan** replacement on your Original Prusa MK4 or MK3.9.
- ◆ Todas las piezas necesarias están disponibles en nuestra tienda prusa3d.com.
- ⓘ Ten en cuenta que debes iniciar sesión para tener acceso a la sección de repuestos.

PASO 2 Herramientas necesarias para este capítulo



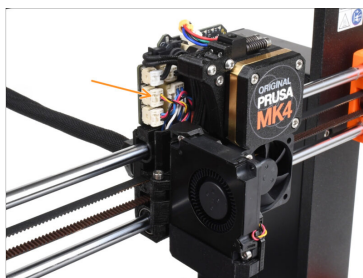
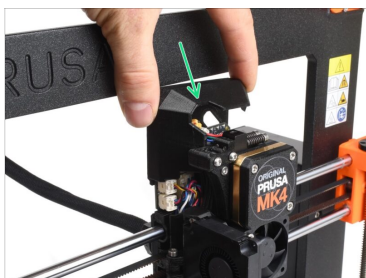
- ◆ **Para este capítulo, prepara por favor:**
- ◆ Llave Allen de 2.5mm

PASO 3 Preparation



- ◆ Before you start, make sure the extruder on your printer is in the middle of both the X and Z axes.
- ◆ Power off your printer and disconnect it from the power.

PASO 4 Loveboard cover removal



- ◆ Remove the loveboard cover on the extruder by lifting it up.
- ◆ Disconnect the print fan from the Loveboard.
 - ⚠ Note there is a small safety latch on the connector, which must be pushed in, while you pull the connector out, in order to disconnect it.

PASO 5 Extracción del ventilador



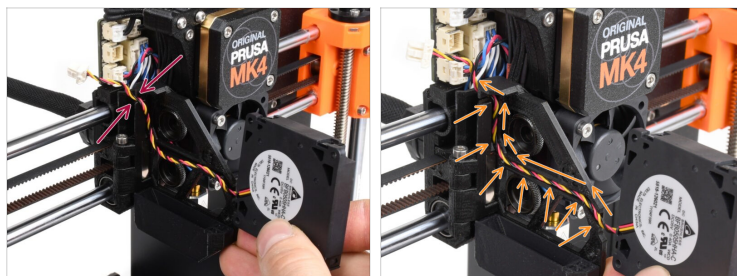
- Using the 2.5mm Allen key, remove the two M3x6 screws holding the print fan.
- Retira el ventilador de capa.

PASO 6 Parts preparation: Print fan



- Para los siguientes pasos, por favor prepara:
- Ventilador de capa (1x)
- i** Can be obtained on Prusa E-shop

PASO 7 Print fan cable management



- Take the replacement print fan and guide its cable through the opening in the print fan holder.
- Tuck the cable into the dedicated channel in the print fan holder. The cable must not protrude out of the channel, otherwise, it won't be able to insert the fan later on.

PASO 8 Print fan installation



- ◆ Cover the cable with the print fan, as seen in the picture. First, insert the bottom of the fan into the fan shroud (printed part below the fan). Then, press the fan towards the print fan holder behind it.



¡No aprietes el cable!

- ◆ Make sure there is no gap between the print fan and the print fan holder behind it - meaning, the cable fits properly into the dedicated channel.
- ◆ Make sure the fan has been inserted properly into the fan shroud.

PASO 9 Finishing the fan installation



- ◆ Fix the fan in place using two M3x6 screws.
- ◆ Connect the fan cable into the corresponding connector on the Loveboard.
- ◆ Cover the extruder with the Loveboard cover on top. Make sure none of the cables gets pinched.

Cómo reemplazar un ventilador de impresión (MK4 / MK3.9)

PASO 10 Hecho



- La sustitución del ventilador ha terminado. Comprueba que el extrusor está montado como se ve en la imagen.
- To test out the fan functionality, visit the menu **Control > Calibrations & Tests > Fan test**.
