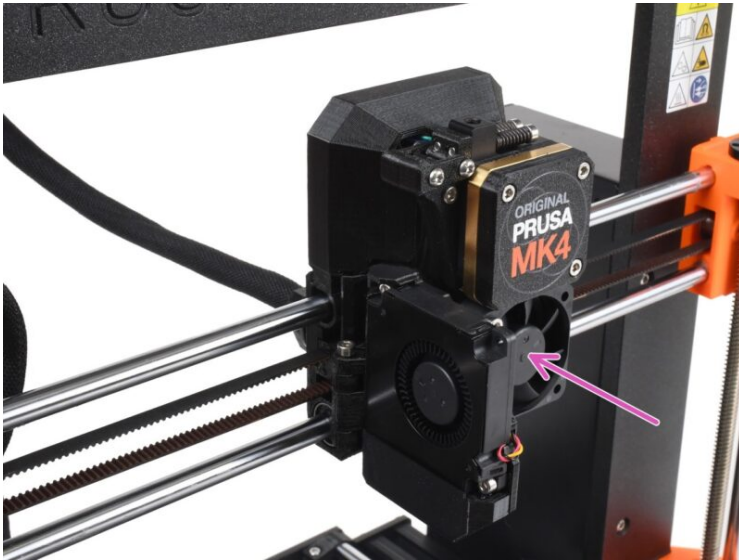


# Tabla de Contenido

<b>Como reemplazar un ventilador del fusor (MK4 / MK3.9)</b> .....	3
Paso 1 - Introducción .....	4
Paso 2 - Herramientas necesarias para este capitulo .....	4
Paso 3 - Preparation .....	5
Paso 4 - Disconnecting the cables .....	5
Paso 5 - Removing the cables .....	6
Paso 6 - Preparación de las piezas del ventilador del hotend .....	6
Paso 7 - Attaching the hotend fan .....	7
Paso 8 - Connecting the cables .....	8
Paso 9 - Finishing the fan installation .....	9



# Como reemplazar un ventilador del fusor (MK4 / MK3.9)

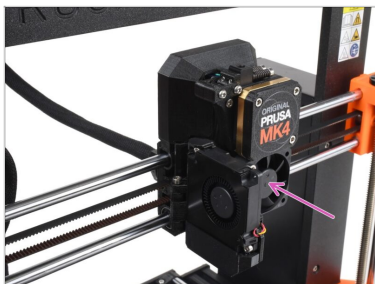


[help.prusa3d.com/g637583](https://help.prusa3d.com/g637583)

Escanea el código QR para ver la última versión de este capítulo.

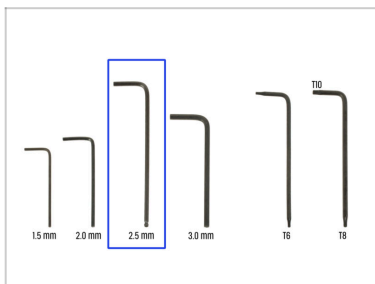


## PASO 1 Introducción



- ◆ This guide will take you through the Hotend fan replacement on your Original Prusa MK4 or MK3.9.
- ◆ Todas las piezas necesarias están disponibles en nuestra tienda [prusa3d.com](https://prusa3d.com).
- ⓘ Ten en cuenta que debes iniciar sesión para tener acceso a la sección de repuestos.

## PASO 2 Herramientas necesarias para este capítulo



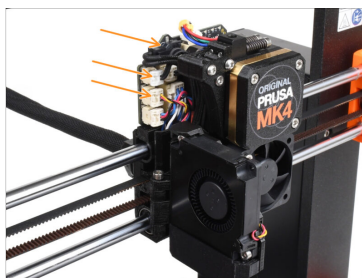
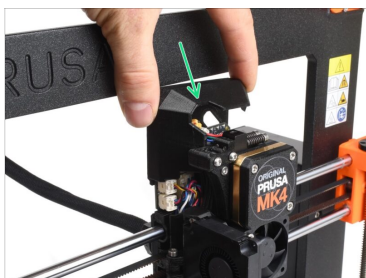
- ◆ Para este capítulo, prepara por favor:
- ◆ Llave Allen de 2.5mm

## PASO 3 Preparation



- ◆ Before you start, make sure the extruder on your printer is in the middle of both the X and Z axes.
- ◆ Power off your printer and disconnect it from the power.

## PASO 4 Disconnecting the cables



- ◆ Remove the loveboard cover on the extruder by lifting it up.
  - ◆ Disconnect the print fan, heater thermistor and heater cables.
- ⚠ Note there is a small safety latch on each connector, which must be pushed in, while you pull the connector out, in order to disconnect it.**

## PASO 5 Removing the cables



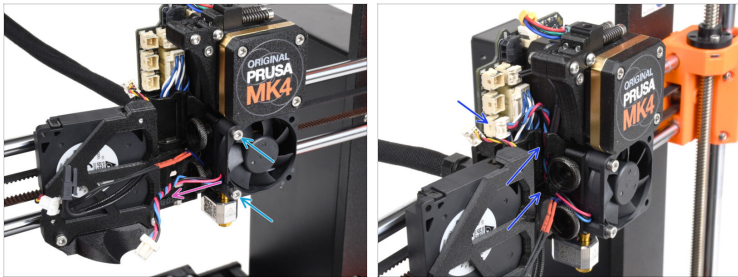
- 🟠 Open up the print fan.
- 🟡 Remove the hotend thermistor and heater cables from the cable groove in the x-carriage.
- 🟣 Disconnect the hotend fan cable and pull it out of the cable groove.
- 🟢 Remove the two M3x18 screws holding the hotend fan and remove the fan.

## PASO 6 Preparación de las piezas del ventilador del hotend



- ⬛ **Para los siguientes pasos, por favor prepara:**
- 🟢 Ventilador del fusor (1x)
- 📘 **i** Can be obtained on Prusa E-shop

## PASO 7 Attaching the hotend fan



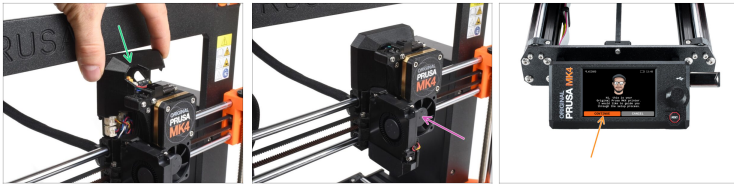
- Attach the hotend fan to the heatsink using two M3x18 screws.
- Make sure the cable is pointing to the left.
- Guide the **hotend fan** cable through the groove in the x-carriage and plug it to the corresponding connector on the **lower left** part of the Loveboard.

## PASO 8 Connecting the cables



- ◆ Guide the heater thermistor cable through the channel in the x-carriage and plug it to the corresponding connector on the Loveboard.
- ◆ Guide the heater cable through the channel in the x-carriage and plug it to the corresponding connector on the Loveboard.
- ⚠ **Make sure none of the cables is protruding out of the cable groove in the X-carriage. Otherwise, the print fan won't close. You can use the Allen key to gently push the cables in.**
- ◆ Close the print fan and plug it to the corresponding connector on the Loveboard.

## PASO 9 Finishing the fan installation



- ◆ Cover the extruder with the Loveboard cover on top. Make sure none of the cables gets pinched.
- ◆ La sustitución del ventilador ha terminado. Comprueba que el extrusor está montado como se ve en la imagen.
- ◆ Para probar la funcionalidad del ventilador, visita el menú *Control -> Calibración y Tests > Test Ventiladores..*



---

---

---

---

---

---

---

---

---

---



---

---

---

---

---

---

---

---

---

---



---

---

---

---

---

---

---

---

---

---

