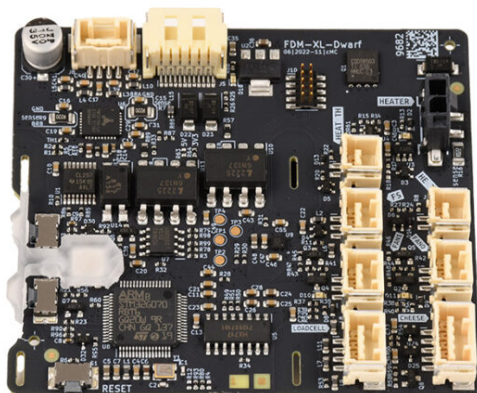


Tabla de Contenido

Cómo reemplazar la placa Dwarf (XL monocabezal)	3
Paso 1 - Introduction	4
Paso 2 - Herramientas necesarias	5
Paso 3 - Descargando el filamento	6
Paso 4 - Protegiendo la base calefactable	7
Paso 5 - Retirando las tapas	7
Paso 6 - Desconectando los cables	8
Paso 7 - Retirando la placa Dwarf	8
Paso 8 - Assembling the new Dwarf board	9
Paso 9 - Conectando los cables	9
Paso 10 - Conectando los cables	10
Paso 11 - Connecting the main cable	10
Paso 12 - Re-assembling covers	11
Paso 13 - Comprobación final	11
Paso 14 - ¡Ya está!	12

Cómo reemplazar la placa Dwarf (XL monocabezal)

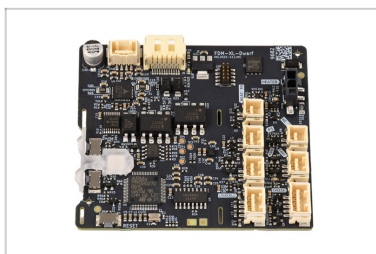


help.prusa3d.com/g565594

Escanea el código
QR para ver la última
versión de este
capítulo.



PASO 1 Introduction



- ◆ This guide will take you through the replacement of a Dwarf board on the **single-tool version of the Original Prusa XL**.
- ◆ Todas las piezas necesarias están disponibles en nuestra tienda prusa3d.com.
- ⓘ Ten en cuenta que debes iniciar sesión para tener acceso a la sección de repuestos.

PASO 2 Herramientas necesarias



- **For the following guide, please prepare:**
- Llave Torx TX8
 - Allen key 2.5mm
 - Needle-nose pliers
 - A cardboard box to use as a heatbed protection during the procedure. *Hint: use the Prusament box.*

PASO 3 Descargando el filamento



- i** The following step is necessary only if you have filament loaded.
- 🔴** Unload the filament from the hotend. On the screen, navigate to *Filament* -> *Unload Filament*.
- 🔵** Cool down the printer to room temperature. On the screen, navigate to *Preheat* -> *Cooldown*.
- ⚠️** Wait for the printer to fully cool down to room temperature before proceeding further.

PASO 4 Protegiendo la base calefactable



- Antes de continuar, te recomendamos que protejas la base calefactable.
- Asegúrate de que la base calefactable se enfría a temperatura ambiente. Coloca la caja de cartón vacía aproximadamente en la parte delantera central de la base calefactable.

PASO 5 Retirando las tapas



- Using the 2.5mm Allen key, loosen the M3x12 screw to open the dwarf-cover-door.
- Using the TX 8 key, remove the M3x8bT and open the dwarf-cover-back.

PASO 6 Desconectando los cables



⚠ Cada conector tiene una pestaña de seguridad. Es necesario presionar la pestaña antes de desconectar. De lo contrario, el conector podría dañarse.

- 🟠 Disconnect the main cable.
- 🟡 Carefully slide up the dwarf-cover-base.
- 🟢 Disconnect all the remaining connectors from the Dwarf board.

PASO 7 Retirando la placa Dwarf



⚠ Avoid scratching the board with the divots and with the needle-nose pliers.

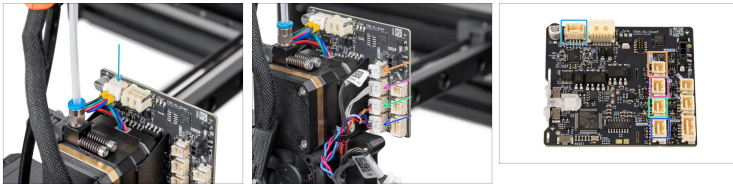
- 🟠 Using needle-nose pliers, rotate the divots so that they are positioned vertically, and aligned with the holes.
- 🟢 Carefully slide the Dwarf board out.

PASO 8 Assembling the new Dwarf board



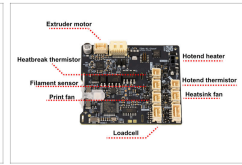
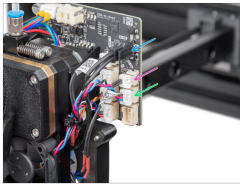
- ⚠️ **Avoid scratching the board with the divots and with the needle-nose pliers.**
- 🟪 Carefully insert the Dwarf board through the divots.
- 🟩 Twist the divots using needle-nose pliers.

PASO 9 Conectando los cables



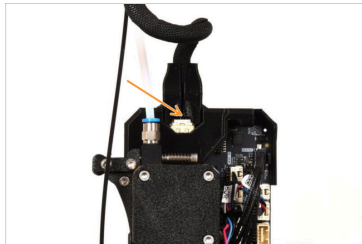
- 🟦 Connect the E-axis motor
- ⓘ The main cable will be connected at a later step.
- ⬛ The right-side area connectors have indications
- ⬛ Connect the following cables on the first column from the left, starting from the uppermost connector:
 - 🟧 HEAT TH: heatbreak thermistor
 - 🟪 FS: filament sensor
 - 🟩 FAN1: print fan
 - 🟦 Célula de carga

PASO 10 Conectando los cables



- Connect the hotend heater cable.
- Connect the following cables on the rightmost column, starting from the uppermost connector:
 - HE TH: hotend thermistor
 - FAN0: heatsink fan
- Double-check that all cables are connected and in the correct position, apart from the main cable.

PASO 11 Connecting the main cable



- Carefully slide the dwarf-cover-base onto the Dwarf board.
 - ⚠ **Avoid scratching or damaging the Dwarf board.**
- Connect the main cable from the top.
- Double-check that all cables are connected and in the correct position.

PASO 12 Re-assembling covers



- Using the TX 8 key, tighten the M3x8bT to attach the dwarf-cover-back.
- Aprieta el tornillo M3x12 y cierra la dwarf-cover-door.
- ⚠ **Avoid pinching any cables.**
- Retira la caja de cartón de la base calefactable.

PASO 13 Comprobación final



- To check if everything is connected correctly, navigate to *LCD Menu -> Control -> Calibrations & Tests*. From that menu, test the following:
 - Test Ventiladores
 - Loadcell Test
 - Nozzle Heaters Test

PASO 14 ¡Ya está!



- ◆ That's it! You successfully replaced the **Dwarf board** on your **single-tool Original Prusa XL**.
