

Table of Contents

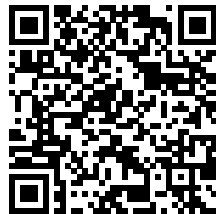
How to use Prusament Refill 900g	3
Step 1 - Introduction	4
Step 2 - Removing the rubber bends	5
Step 3 - Prusament Spool Opener: Parts preparation	6
Step 4 - Spool Preparation	6
Step 5 - Tool Insertion	7
Step 6 - Tool Engagement	8
Step 7 - Spool Disassembly	9
Step 8 - Refill Preparation	9
Step 9 - Refill	10
Step 10 - Spool Assembly	10
Step 11 - Finish	11

How to use Prusament Refill 900g



help.prusa3d.com/g440297

Scan the QR code to
display the latest
version of this
chapter.

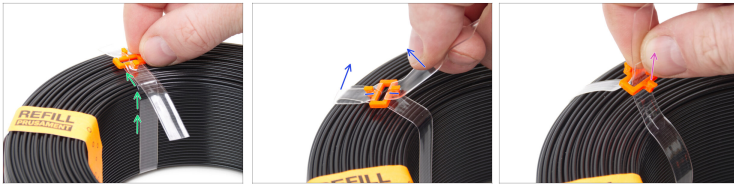


STEP 1 Introduction







- In this guide, we will reload a **Prusament spool** using a filament **Refill**.
- This guide is valid only for the new Prusament spool, with the **plastic center part**.
- 📌 Requires a **900g version** of the Prusament Refill.
 - Since March 2026, new Refill spools are secured with a **rubber band**.
 - Older stock may still use a **paper strap**.
- This guide does not cover the older Prusament spool with the cardboard center.
 - ⚠️ **The older design used a 1000g (1kg) version of the Refill. This refill is not compatible with the newer spool design!**

STEP 2 Removing the rubber bands



If your Refill spool is **secured with rubber bands**, follow these steps to remove them.

-  Slide all three buckles from the inner part of the spool to the side for easier handling. Move the entire rubber band, not just the buckles.
-  Unhook both ends of the rubber band from the tabs to release it.
-  Remove the clips from the rubber band.
-  You won't need the bands anymore.

STEP 3 Prusament Spool Opener: Parts preparation

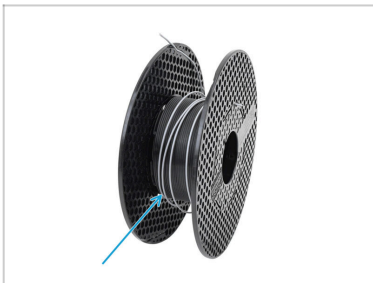


◆ For the following steps, please print:

- ◆ Prusament Spool Opener (1x) *This part needs to be printed.*

① All necessary print files and instructions are available on printables.com.

STEP 4 Spool Preparation



- ◆ Prepare a depleted Prusament spool with the plastic center part.
- ◆ Remove any leftover filament.

STEP 5 Tool Insertion



- ✦ Align the rectangular tab on the tool with the notch in the center of the spool.
- ⓘ The Prusament spool opener can be used **on both sides** of the spool.
- ✦ Fully insert the end of the Prusament spool opener at an angle, into the spool center.
 - ✦ Even the rectangular tab has to be inserted below the surface of the spool side.
- ✦ Push the lever part of the Prusament spool opener onto the spool.
 - ✦ This should engage the tab into the notch.

STEP 6 Tool Engagement



- ◆ Reach to the inside and pull the inner part of the tool up.
- ◆ Lift the end of the tool until it clicks into place.
 - ⚠ You may need to apply moderate force to accomplish this.
- ◆ Once the tool is fully engaged, the area of the spool side around the tab should bulge out slightly.
 - ⓘ This is important because it releases the internal lock.

STEP 7 Spool Disassembly

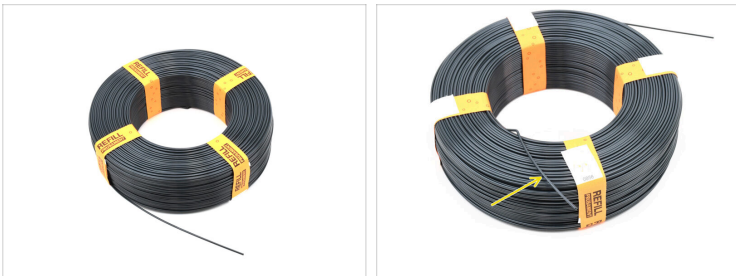


- Grip the disassembly tool and rotate it counterclockwise to unlock the spool side from the center.

 Righty tighty, lefty loosey!

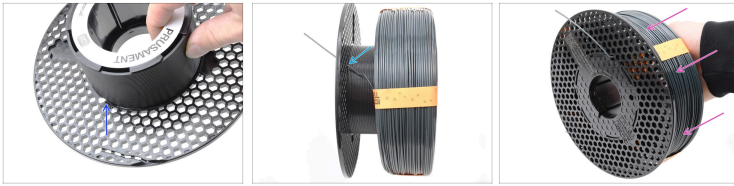
- Remove the top side from the spool.

STEP 8 Refill Preparation



- Prepare the filament refill.
- Locate the side with the inner end of the filament.

STEP 9 Refill



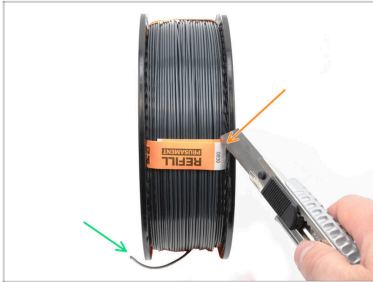
- ◆ Locate the inner filament end opening with the inclined groove.
- ◆ Insert the inner filament end into the dedicated opening.
- ◆ Slide the Refill onto the spool center until it is fully aligned.

STEP 10 Spool Assembly



- ◆ Attach the side part onto the spool and rotate it clockwise, until it clicks into place.
- ◆ Hook the inner end of the filament into one of the openings in the spool.

STEP 11 Finish



- ✦ Carefully cut off the exposed parts of the transport straps.
- ⚠ Hold the filament end, while removing the transport straps, to prevent tangling.
- ✦ Hook the filament end onto the spool side to prevent tangling when it is not loaded into the printer.
