

# Tabla de Contenido

<b>How to lubricate linear bearing rails (XL) .....</b>	<b>3</b>
Paso 1 - Introduction .....	4
Paso 2 - Tools necessary for this manual .....	5
Paso 3 - Printer preparing .....	6
Paso 4 - CAUTION: Lubricant Handling .....	7
Paso 5 - Cartridge filling .....	8
Paso 6 - Needle attaching .....	8
Paso 7 - X-axis rails lubing .....	9
Paso 8 - Front Y-axis rails lubing .....	10
Paso 9 - Rear Y-axis rails lubing .....	11
Paso 10 - Bottom Z-axis rails lubing .....	12
Paso 11 - Z-axis moving .....	13
Paso 12 - Upper Z-axis rails lubing .....	14
Paso 13 - Good job! .....	14



# How to lubricate linear bearing rails (XL)



[help.prusa3d.com/g384279](https://help.prusa3d.com/g384279)

Escanea el código  
QR para ver la última  
versión de este  
capítulo.



### PASO 1 Introduction



- This guide will take you through the lubrication of all **XL linear bearing rails** on the **Original Prusa XL**.
- ⓘ Las siguientes instrucciones son compatibles con todas las versiones de las Original Prusa XL.
- Todas las piezas necesarias están disponibles en nuestra tienda **prusa3d.com**.
- Este manual es compatible con el Original Prusa XL Enclosure.
- ⓘ *The recommended lubrication interval for linear bearings is every 100 km (62.1 miles) or every 3–6 months, whichever comes first.*

## PASO 2 Tools necessary for this manual



- **Para el siguiente manual, por favor prepara:**
- Par de guantes de nitrilo (1x)
- Microlube GL 261 20g (1x)
- Dosing needle (1x)
- Cartridge with manual piston (1x)
- Paper towels for cleaning the lubricant.

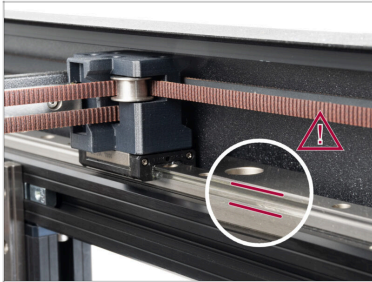
## PASO 3 Printer preparing



### ⚠ Make sure the printer is cold.

- If not, go to *Control > Temperature > Cooldown*. **Wait for the printer to cool down.**
- Auto home the printer. Go to *Control > Auto home*. **Wait for the printer to home. Do not touch the printer.**
- Disable the motors. Go to *Control > Disable Motors*. Now the XY axes can be moved freely by hand.
- ⓘ Upon disabling the motors the heatbed will move down to prevent colliding with the nozzle.
- ⓘ Cover the heatbed with a piece of cardboard or a towel to prevent it from becoming greasy.

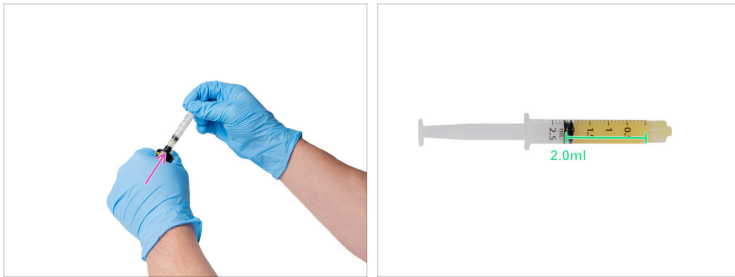
## PASO 4 CAUTION: Lubricant Handling



**⚠ CAUTION: Avoid direct skin contact with the lubricant used for the linear rails in this printer. If contact occurs, wash your hands immediately, especially before eating, drinking, or touching your face.**

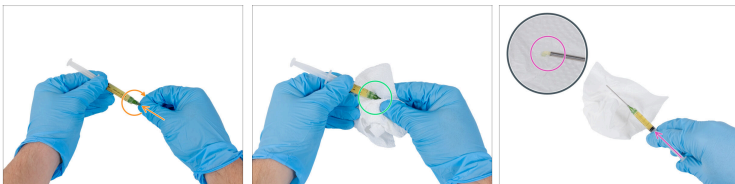
- El lubricante se acumula en los rodamientos de la impresora, principalmente en los canales de las guías lineales.

## PASO 5 Cartridge filling



- Put the gloves on both your hands.
- Attach the Cartridge, gently squeeze the Microlube and fill the Cartridge with a tube of at least 2 ml.
- Check that there is enough Microlube on the Cartridge. Look at the picture.

## PASO 6 Needle attaching



- Coloca y fija la aguja girándola en el sentido de las agujas del reloj.
- Wipe any remaining lubricant from the joint with a paper cloth.
- Squeeze the cartridge to remove the air from the needle as shown in the picture.

## PASO 7 X-axis rails lubing



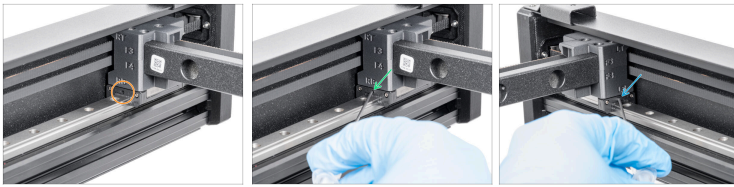
- i The XY-axis can be moved freely.
- Each carriage has a small hole for lubrication highlighted in the picture.
- On the right X-axis rail:
  - Inserte la aguja y apriete el cartucho. **Deposite exactamente 0,1 ml de Microlube.**
- On the left X-axis rail:
  - Inserte la aguja y apriete el cartucho. **Deposite exactamente 0,1 ml de Microlube.**

## PASO 8 Front Y-axis rails lubing



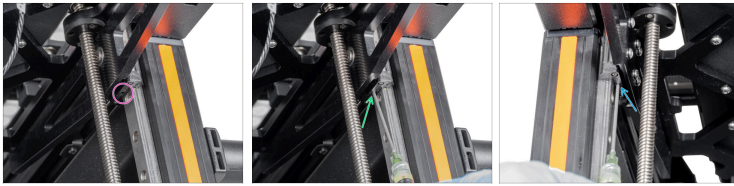
- Each carriage has a small hole for lubrication highlighted in the picture.
- On the right front Y-axis rail:
  - Inserte la aguja y apriete el cartucho. **Deposite exactamente 0,1 ml de Microlube.**
- On the left front Y-axis rail:
  - Inserte la aguja y apriete el cartucho. **Deposite exactamente 0,1 ml de Microlube.**

## PASO 9 Rear Y-axis rails lubing



- Manually move the Y-axis to the front of the printer.
- Each carriage has a small hole for lubrication highlighted in the picture.
- On the right front Y rail:
  - Inserte la aguja y apriete el cartucho. **Deposite exactamente 0,1 ml de Microlube.**
- On the left front Y rail:
  - Inserte la aguja y apriete el cartucho. **Deposite exactamente 0,1 ml de Microlube.**

## PASO 10 Bottom Z-axis rails lubing



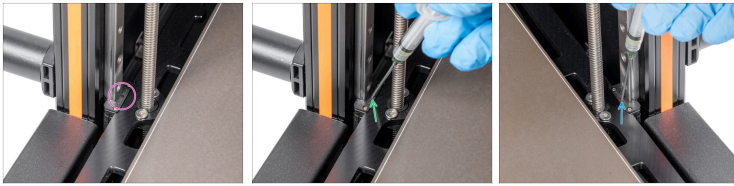
- On the underside of the Z-axis carriage:
- Each carriage has a small hole for lubrication highlighted in the picture.
- On the right Z-axis:
- Inserte la aguja y apriete el cartucho. **Deposite exactamente 0,1 ml de Microlube.**
- On the left Z-axis:
- Inserte la aguja y apriete el cartucho. **Deposite exactamente 0,1 ml de Microlube.**

### PASO 11 Z-axis moving



- Now we have to move the Z-axis down.
- On the xLCD, go to *Control > Move axis > Move Z* and set 350mm.
- Wait until the Z-axis is moved down. Then proceed to the next step.

## PASO 12 Upper Z-axis rails lubing



- On the top of the Z-axis carriage:
- Each carriage has a small hole for lubrication highlighted in the picture.
- On the left Z-axis:
  - Inserte la aguja y apriete el cartucho. **Deposite exactamente 0,1 ml de Microlube.**
- On the right Z-axis:
  - Inserte la aguja y apriete el cartucho. **Deposite exactamente 0,1 ml de Microlube.**

## PASO 13 Good job!



- Nice work! The printer is now ready to print.



---

---

---

---

---

---

---

---

---

---



---

---

---

---

---

---

---

---

---

---



---

---

---

---

---

---

---

---

---

---