

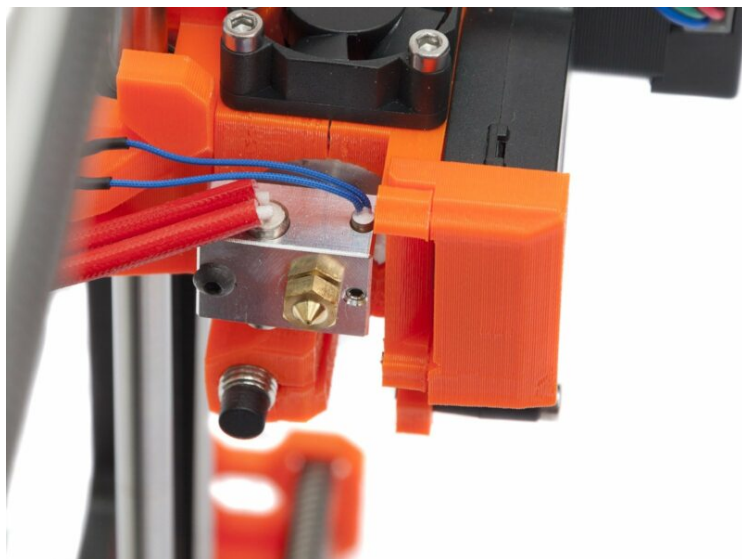
Table of Contents

How to replace a hotend thermistor (MK2S) ..

3

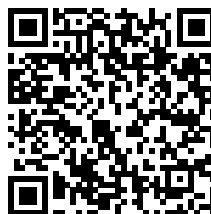
Step 1 - Cut selected zip ties	4
Step 2 - Unwrapping the spiral wrap	5
Step 3 - Unplugging thermistor from RAMBo	5
Step 4 - Removing old thermistor	6
Step 5 - Inserting new thermistor	7
Step 6 - Wrap the cables by spiral wrap	8

How to replace a hotend thermistor (MK2S)

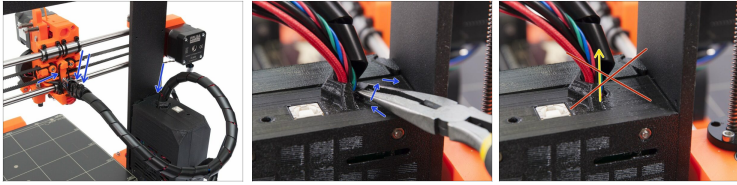






help.prusa3d.com/g22208

Scan the QR code to display the latest version of this chapter.

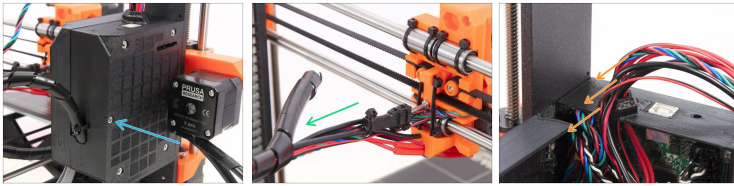


STEP 1 Cut selected zip ties



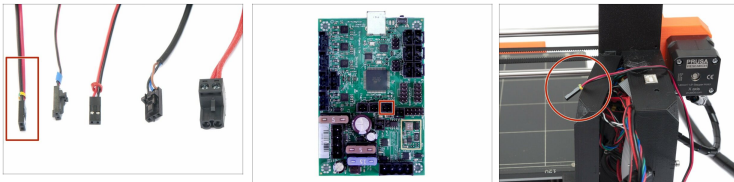
-  **BEFORE YOU START** ensure the printer is turned off and unplugged from the electricity to avoid damage to you and the printer!
-  Turn the back of the printer towards you.
-  Using pliers cut the selected zip ties.
-  **Don't try to remove the spiral wrap yet, it might be wrapped partly inside the cover and you can damage the cables. Wait for the next step!**


STEP 2 Unwrapping the spiral wrap



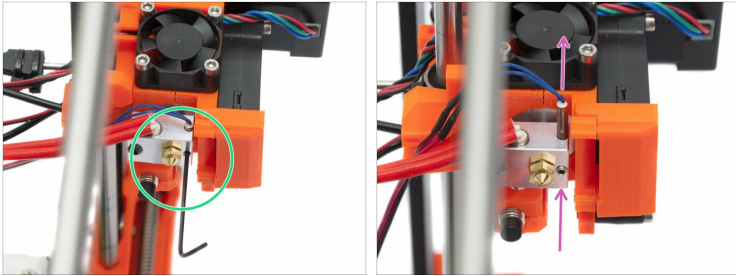
- Using 2.5 mm Allen key release the bolt holding the RAMBO cover door.
- Unwrap the spiral wrap all the way to the Rambo cover.
- Unwrap spiral wrap inside the cover and remove it completely.
- Gently take all the cables away from the top opening. Proceed with caution and don't pull hard on the wires.

STEP 3 Unplugging thermistor from RAMBO



- There are multiple cables coming out from the Extruder, look for the cable with **Yellow/Green heat shrink!**
-  **Unplug this connector, DO NOT PULL the cable!** Leave the remaining cables (connectors) plugged in.

STEP 4 Removing old thermistor



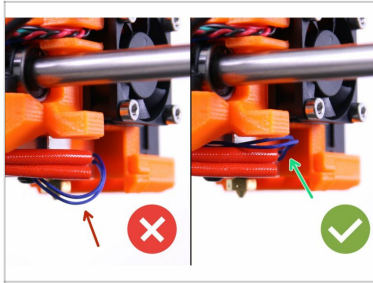
- Lay the printer on the PSU side so you have better access to the thermistor.
- Using 1.5mm Allen key release the screw on the heater block. **BE GENTLE** while unscrewing the screw or you might damage the thread!
- Use the Allen key again and carefully push the thermistor "head" upwards.
- Remove the thermistor completely.

STEP 5 Inserting new thermistor



- ✿ Carefully insert the new thermistor inside the heater block, check it is aligned properly.
- ✿ Using 1.5mm Allen key tighten the screw again. **DO NOT USE** excessive force or you might damage the thread!
- ✿ Take the thermistor connector and connect it to the RAMBo board.

STEP 6 Wrap the cables by spiral wrap



- Now it is time to wrap the cables back to the spiral wrap.
- Use our guide for the kit assembly and skip steps, which are already done.
- Start by setting proper position of the thermistor cables Extruder - Step 28
