

# Table of Contents

## How to replace a print head PTFE tube

- (MINI/MINI+)** ..... 3
  - Step 1 - Introduction ..... 4
  - Step 2 - Tools necessary for this guide ..... 5
  - Step 3 - Removing the old PTFE tube ..... 5
  - Step 4 - New PTFE tube - parts preparation  
..... 6
  - Step 5 - Assembling the new PTFE tube ..... 7
  - Step 6 - Assembling the PTFE tube ..... 8
  - Step 7 - Assembling the PTFE tube ..... 9
  - Step 8 - Assembling the PTFE tube ..... 10
  - Step 9 - Mounting the PTFE tube ..... 11
  - Step 10 - Mounting the long PTFE tube ..... 11



# How to replace a print head PTFE tube (MINI/MINI+)



[help.prusa3d.com/g142572](https://help.prusa3d.com/g142572)

Scan the QR code to  
display the latest  
version of this  
chapter.

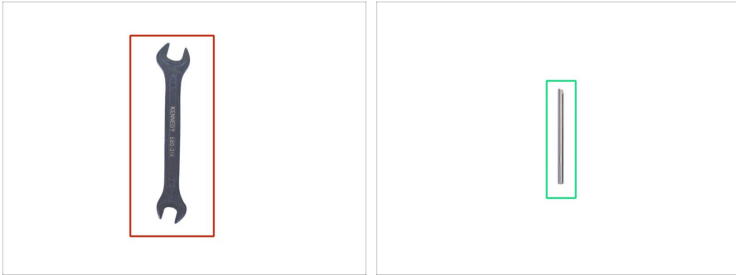


## STEP 1 Introduction



- ① This guide will take you through the replacement of the **Bowden PTFE tube** on the **Original Prusa MINI and MINI+**.
- ◆ **There are two variants of the replacement:**
  - ◆ Buy an assembled Bowden PTFE tube in our eshop [shop.prusa3d.com](http://shop.prusa3d.com) and replace it by simply screwing it on the printer.
  - ◆ Assemble the Bowden PTFE tube yourself using the spare parts supplied with the printer and reused parts. Please continue in the next step of this guide.

## STEP 2 Tools necessary for this guide



- 🔸 Wrench 10 mm (2x)
- 🟢 2mm shaft / 2mm drill bit

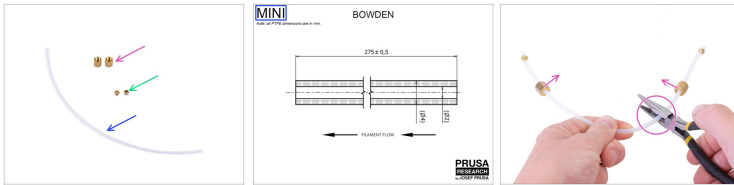
---

## STEP 3 Removing the old PTFE tube



- 🟢 Release the brass nut on the PTFE print head mounting.
- 🟡 Remove the PTFE tube from the fitting.
- 🔵 Release the fitting from the heatsink.
- 🟡 Release the brass nut from the PTFE extruder mounting.
- 🔸 Remove the PTFE tube.
- 📄 (i) Don't throw anything away, wait for the next step. Some parts will be reused.

## STEP 4 New PTFE tube - parts preparation



### For the following steps, please prepare:

#### New Bowden PTFE tube (1x)

**i** To create your own PTFE tube, you can use this guide [How to trim PTFE tube - Original Prusa printers](#)

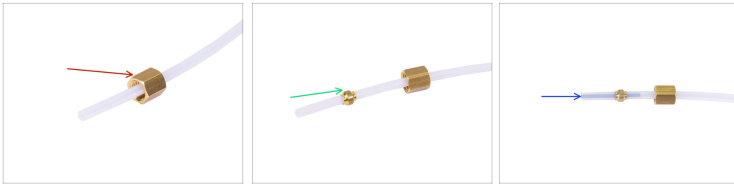
#### Brass olive (2x)

**i** Olives are included in the spare parts package supplied with the printer.  
Do not reuse olives from the old tube.

#### Brass nut (2x)

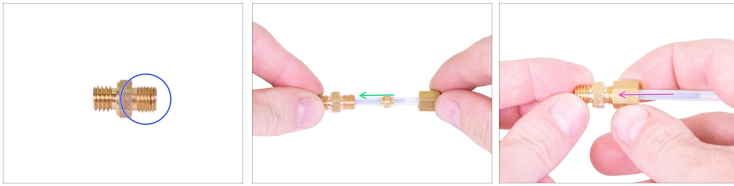
**i** Reuse the brass nuts from the old tube. Cut the tube to get access to the nuts.

## STEP 5 Assembling the new PTFE tube



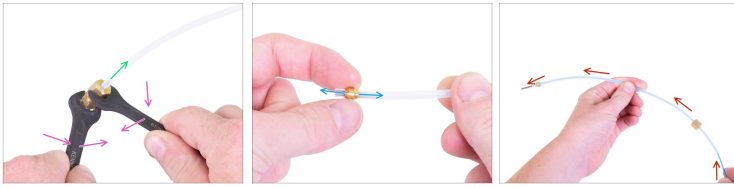
- ◆ Place one brass nut on the PTFE tube. Double-check the orientation, it must be the same as in the picture.
  - ◆ Place the brass olive on the PTFE tube approximately 2 cm (0.79inches) from the end. The orientation of the olive doesn't matter. Both sides are symmetrical.
  - ◆ Insert the 2mm shaft all the way into the PTFE tube. The shaft must be inside the olive during the assembly like in the picture.
- ⓘ If you are using a drill bit, insert it with the blunt end into the tube. The sharp end can damage the tube.

## STEP 6 Assembling the PTFE tube



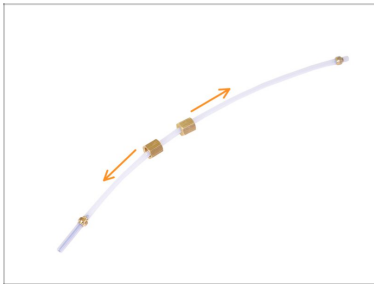
- ◆ Prepare the fitting that you have removed from the heatsink. Take a look closer, there are two types of the thread. We need the **side with the fine thread** for the following steps.
- ◆ Insert the PTFE tube into the fitting all the way in (the side with fine thread). Make sure that the inserted shaft does not fall out of the tube.
- ◆ Slide the brass nut over the olive and screw it onto the fitting.

## STEP 7 Assembling the PTFE tube



- ◆ Using two wrenches tighten the fitting against the nut. *The olive inside will get pressed into the PTFE tube, which is needed for the printer to work correctly.*
  - ◆ Release the nut and remove the PTFE tube from the fitting.
  - ◆ Make sure the olive is pressed correctly and does not move. If it moves, tighten the brass nut against the fitting with more force.
  - ◆ Insert a piece of filament into the PTFE tube from the other end and pass it all the way through in until it pushes the shaft out of the tube.
- ⚠ **The filament must pass through the tube easily and must not get stuck anywhere.**

## STEP 8 Assembling the PTFE tube



- ◆ Use the same procedure to place the second olive on the other end of the tube. You can return to step 5, but first, read this entire step.
- ◆ **Before fixing the position of the second olive**, make sure that both nuts are fitted correctly on the tube. **The openings in both nuts must be facing out** (see the arrows).
- ⚠ **Warning:** Double-check **correct placement and orientation of all parts**. It will not be possible to adjust anything, once the olives are squished (pressed) in the PTFE tube.

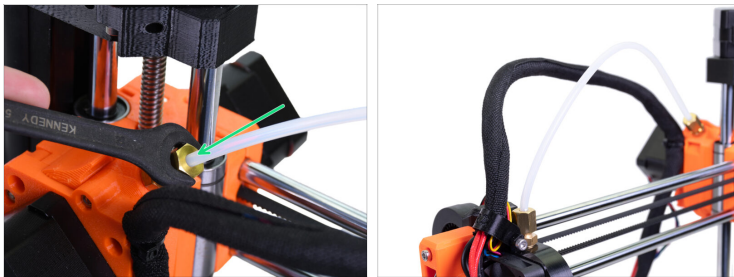
## STEP 9 Mounting the PTFE tube



- Insert the fitting with the coarse thread into the heatsink and carefully tighten it by the wrench. **Do not use excessive force!**
- Insert the PTFE tube into the fitting and tighten the brass nut. The orientation doesn't matter the tube is symmetrical.

---

## STEP 10 Mounting the long PTFE tube



- Insert the second end of the PTFE tube into the fitting on the extruder and carefully tighten the brass nut. **Do not use excessive force!** You can crack plastic parts.
- ... **It's done!** Your printer is ready to print.



---

---

---

---

---

---

---

---

---

---



---

---

---

---

---

---

---

---

---

---

