

Spis treści

Jak wymienić główną wiązkę przewodów

(CORE One/+)	3
Krok 1 - Introduction	5
Krok 2 - Narzędzia niezbędne dla tej instrukcji	6
Krok 3 - Moving the Z-axis	7
Krok 4 - Unloading filament	8
Krok 5 - Preparing the printer	9
Krok 6 - Top Cover Removal	10
Krok 7 - Removing the door	11
Krok 8 - Accessing the LoveBoard	12
Krok 9 - Disconnecting the hotend	12
Krok 10 - Disconnecting the fan cables	13
Krok 11 - Demontaż wentylatora wydruku	14
Krok 12 - Demontaż tylnej pokrywy	14
Krok 13 - Disconnecting the main cable	15
Krok 14 - Releasing the main cable	16
Krok 15 - Accessing the electronics	17
Krok 16 - Accessing the buddy board	17
Krok 17 - Unplugging the main cable	18
Krok 18 - Pushing the main cable inside	19
Krok 19 - Removing the Main-cable-clip	20
Krok 20 - Main cable: parts preparation	20
Krok 21 - Przymocowanie głównej wiązki przewodów	21
Krok 22 - Plugging in the main cable	21
Krok 23 - Attaching the rear cover	22
Krok 24 - Montaż wentylatora wydruku	23
Krok 25 - Podłączenie przewodów Nextrudera	24
Krok 26 - Covering the LoveBoard	25
Krok 27 - Leading the main cable	26
Krok 28 - Podłączenie głównego przewodu	27
Krok 29 - Covering the xBuddy board	28
Krok 30 - Covering the cables	29

Krok 31 - Attaching the cable ties I.	29
Krok 32 - Attaching the cable ties II.	30
Krok 33 - Attaching the main cable clip	31
Krok 34 - Włączenie drukarki	32
Krok 35 - Final check	32

**Zeskanuj kod QR,
aby przejść do
najnowszej wersji
tego rozdziału.**

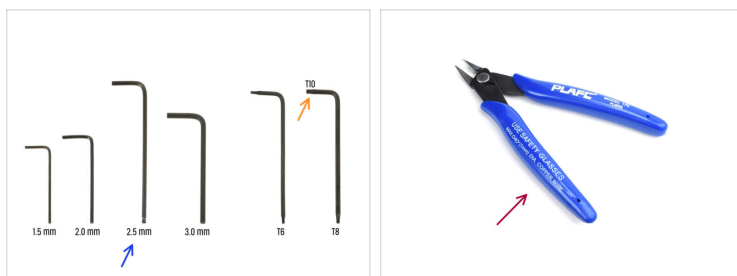


KROK 1 Introduction



- Ten przewodnik poprowadzi Cię przez proces **wymiany głównej wiązki przewodów w Prusa CORE One/CORE One+**.
- Wszystkie potrzebne części są dostępne w naszym sklepie internetowym prusa3d.com
 - 📌 Pamiętaj, że musisz się zalogować, aby mieć dostęp do sekcji części zamiennych.
- ⓘ Note that there are two versions of the main cable. The wires can also be black and white. The replacement process is the same for both versions.

KROK 2 Narzędzia niezbędne dla tej instrukcji



● **Do tego rozdziału przygotuj następujące narzędzia:**

- Klucz imbusowy 2,5 mm
- Wkrętak/klucz Torx T10
- Cążki boczne - opcjonalne narzędzie, zalecane do łatwiejszego przecinania opasek zaciskowych. Można je nabyć w naszym sklepie internetowym prusa3d.com.

KROK 3 Moving the Z-axis



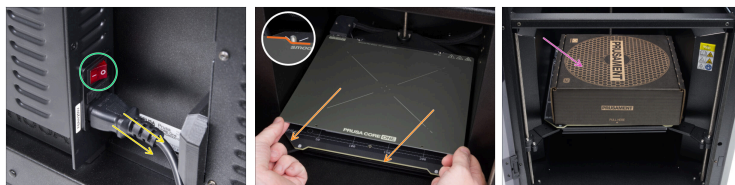
- i** Before you begin, move the heatbed to an accessible position.
- !** During this step, **keep the printer door closed and do not reach inside.**
- In the printer menu, go to **Control -> Auto Home.**
- After Auto Home, move the heatbed down via **Control -> Move Axis -> Move Z** until the highlighted screws and the underside of the heatbed are accessible (minimum 200 mm).
- i** This ensures both areas will be comfortably accessible during the procedure, as they will need to be handled later in the manual.


KROK 4 Unloading filament








- **Make sure no filament is loaded in the printer.**
- To unload the filament, go to the main menu, select **Filament**, and click on **Unload filament**.
- Rozładuj filament z drukarki.
- **Remove the filament spool** from the printer.

KROK 5 Preparing the printer



 Before you begin, make sure the **printer has cooled down**.

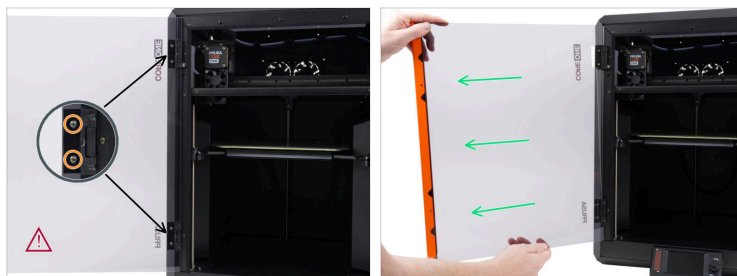
-  Wyłącz drukarkę za pomocą przełącznika z tyłu.
-  Odłącz drukarkę od zasilania.
-  Zdejmij płytę stalową stołu.
-  Place an empty cardboard box (you can use a Prusament box) on the heatbed to protect it from damage.
-  **Remove the USB drive** to prevent damage while handling the printer.

KROK 6 Top Cover Removal



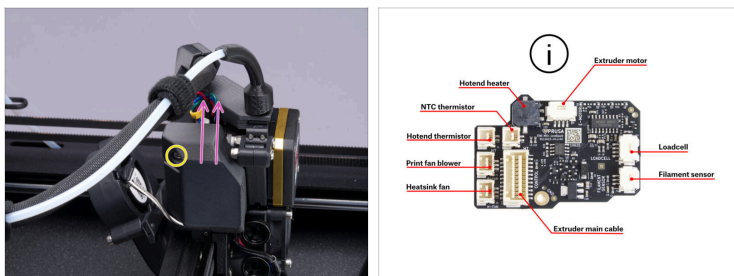
- 🟠 Otwórz drukarkę. Od wewnątrz sięgnij do nylonowego nitu z przodu po prawej stronie górnej pokrywy. Wypchnij go, aby ją odblokować.
- 🟡 Wyciągnij nit od zewnątrz.
- 🟢 Wyciągnij nity nylonowe z górnej pokrywy, stosując tę samą technikę.
- 🟣 Zdejmij górną pokrywę.

KROK 7 Removing the door



- i** We highly recommend that you remove the door. This will make moving and turning the printer a lot easier and safer.
- ◆** Using the T10 key, remove two M3x5rT screws securing the door panel in both hinges.
- ⚠** **Niezbędne jest podtrzymanie panelu drzwi podczas odkręcania śrub, aby zapobiec jego opadnięciu.**
- 📌** Start removing the screws from the lowest.
- ◆** Ostrożnie wysuń panel drzwi z zawiasów.
- Place the door panel and the four screws in a clean and safe area to avoid any damage.

KROK 8 Accessing the LoveBoard



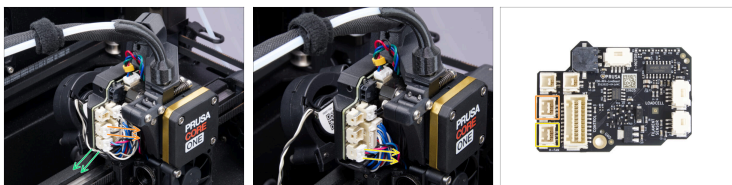
- Wykręć kluczem imbusowym 2,5 mm dwie śruby M3x10 z lewej pokrywy głowicy [Printhead-cover-left].
- Zdemontuj pokrywę.
- ⓘ Note the LoveBoard scheme for future reference.


KROK 9 Disconnecting the hotend






- ⚠ **It is necessary to press the safety latch before disconnecting the cables.** Otherwise, you risk damaging the connector.
- Odłącz przewód grzałki hotendu.
- Odłącz przewód termistora hotendu.

KROK 10 Disconnecting the fan cables



 **Press the safety latch before disconnecting the cables. Otherwise, you risk damaging the connector.**

-  Press the safety latch and disconnect the print fan cable.
-  Pull the cable out of the ridge at the bottom and let it hang on the side.
-  Press the safety latch and disconnect the heatsink fan.

KROK 11 Demontaż wentylatora wydruku



- On the other side of the Nextruder, use the 2.5mm Allen key to remove two M3x6 screws.
- Remove the Printhead-cover-right.
- Use the 2.5mm Allen key to remove the M3x20 screw holding the print fan.
- Zdejmij wentylator wydruku.

KROK 12 Demontaż tylnej pokrywy



- Use the 2.5mm Allen key to remove two M3x10 screws that hold the Printhead-cover-rear.
- Remove the Printhead-cover-rear.
- Dislodge the main cable from the channel on top of the Nextruder.

KROK 13 Disconnecting the main cable



- ◆ Press the safety latch and disconnect the main cable.
- ⓘ Disconnecting the NTC thermistor cable is optional. Only do so if the cable is in the way.
- ◆ Move the main cable around the ridge under the LoveBoard.
- ◆ Leave the main cable hanging for now.

KROK 14 Releasing the main cable



- ◆ Release the five cable straps.
- ◆ Focus on the area behind the Y-axis motor on the right side of the printer.
- ◆ Using a 2.5 mm Allen key, remove the M3x10 screw securing the Main-cable-clip.
- ⓘ Leave the Main-cable-clip attached to the main cable. Only remove the screw, so the inside of the printer does not get scratched.
- ◆ Place the main cable on the cardboard box on the heatbed.

KROK 15 Accessing the electronics



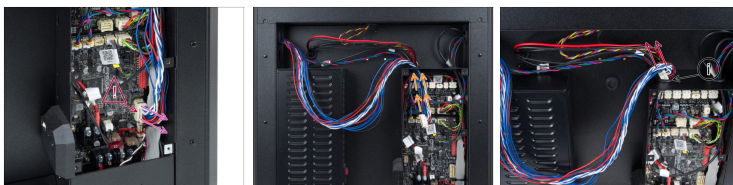
- ◆ Inside, on the back panel of the printer, remove two M3x4rT screws using the T10 Key.
- ◆ Z tyłu drukarki przesunij środkową pokrywę w dół.
- ◆ Make sure that all four pegs are removed from the back panel.
- ◆ Carefully tilt the cover and remove it from the printer.







KROK 16 Accessing the buddy board



- ◆ Use flush cutters to remove all zipties that secure the cables. **Be very careful not to cut any cables.**
- ◆ Using the T10 Key, remove all six M3x4rT screws securing the xBuddy box cover.
- ◆ Pull the xBuddy box cover towards you and remove it from the printer.
- ◆ Use flush cutters to remove three zipties that secure the cables inside the Buddy board case. **Be very careful not to cut any cables.**

KROK 17 Unplugging the main cable



-  **The cable connector has a safety latch. It is necessary to **press the latch before disconnecting** the cable.**
-  Press the safety latch and disconnect the main cable from the xBuddy board.
-  Route the main cable out of the xBuddy box through the opening at the top.
-  The Nextruder main cable may pass through either the right or left opening, depending on when the printer was assembled.
-  Turn the main cable sideways to remove it through the opening.
-  You can temporarily remove the plastic grommet to create more space for the cable to pass through. Be careful not to damage the cable connector.

KROK 18 Pushing the main cable inside



- Route the main cable through the upper oval opening into the printer. Gently pull on the cable on the inside of the printer.
- Turn the main cable connector sideways and carefully push it through the opening.
- On the inside, push the main cable connector through the opening between the CoreXY assembly and the printer.
 - ⓘ It is a tight fit; be patient and careful. Push the connector from the bottom to help it get through.
- Once the main cable is free, remove it from the printer.

KROK 19 Removing the Main-cable-clip



- Very carefully open the Main-cable-clip. The plastic is flexible, however it might break.
- Remove the Main-cable-clip from the main cable and set it aside. We will need it later.

KROK 20 Main cable: parts preparation



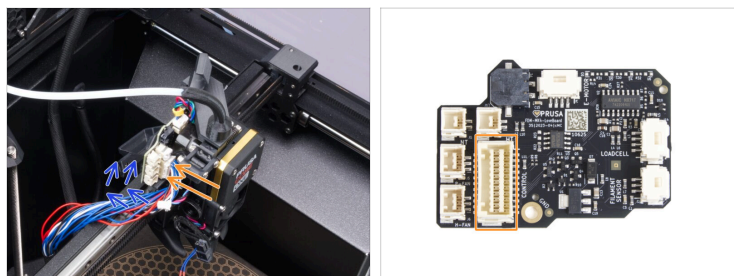
- Do kolejnych etapów przygotuj:
 - New main cable

KROK 21 Przymocowanie głównej wiązki przewodów



- ◆ Note that the cable sleeve is closer to the connector on one end. Use this end in the next step.
- ◆ Turn the main cable connector sideways and gently push it through the opening in the rear of the printer.
- ◆ On the inside, thread the main cable through an opening behind the CoreXY assembly in the right rear corner

KROK 22 Plugging in the main cable



- ◆ Plug the main cable into the LoveBoard. Ensure that the safety latch clicks in place.
- ◆ Move the main cable through the ridge under the Love Board.

KROK 23 Attaching the rear cover



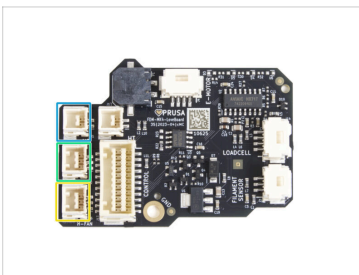
- ◆ Guide the main cable through the cable channel above the LoveBoard.
- ⓘ Twist the cable sleeve slightly to ensure that it will fit into the cable channel.
- ◆ Końcówka owijki tekstylnej musi być zrównana z krawędzią plastikowego elementu.
- ◆ Attach the Printhead-cover-rear.
- ⚠ Ensure that no cables get pinched or damaged when attaching the Printhead-cover-rear.
- ◆ Secure the Printhead-cover-rear in place with two M3x10 screws.

KROK 24 Montaż wentylatora wydruku



- 🟠 Mount the print fan onto the Fan-shroud.
- 🟡 Secure the print fan in place with the M3x20 screw.
- 🟣 Loop the cable tie around the PTFE tube and main cable as shown in the photo.
- ⬛ Zaciśnij opaskę tak mocno, jak to możliwe.
- 🟡 Attach the Printhead-cover-right.
- 🟢 Secure the Printhead-cover-right with two M3x6 screws.

KROK 25 Podłączenie przewodów Nextrudera



- Connect the hotend thermistor cable.
- Connect the print fan cable.
- Connect the hotend fan cable.
- ⚠ **Ensure that the safety latch clicks in place on each connector.**
- Push the print fan cable into the channel in the plastic cover.

KROK 26 Covering the LoveBoard



- ◆ Note the slot on the bottom of the Nextrunder.
- ◆ Insert the protrusion on the underside of the Printhead-cover-left into the slot on the bottom of the Nextrunder.
- ◆ Attach the Printhead-cover-left.
- ◆ Secure the Printhead-cover-left with one M3x10 screw.

KROK 27 Leading the main cable



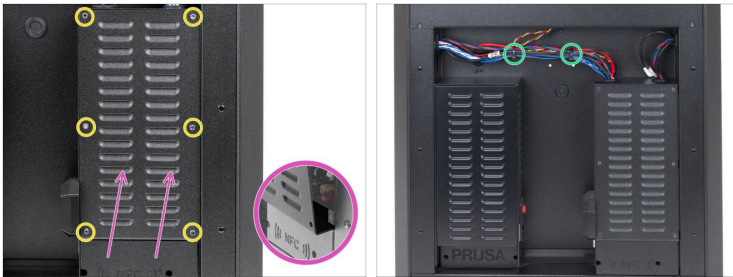
- ◆ You can lead the new main cable through either the right or left opening in the xBuddy case. We will leave this to your preference.
- ◆ Turn the main cable connector sideways to insert it through the opening.
- ⓘ You can temporarily remove the rubber grommet to create more space for the cable to pass through. Be careful not to damage the cable connector.
- ◆ Once the main cable connector is through, pull it in all the way towards the connector in the xBuddy board.

KROK 28 Podłączenie głównego przewodu



- ◆ Connect the main cable to the xBuddy board
- ⚠ Ensure that the safety latch clicks in place to secure the main cable connector to the xBuddy board.
- ◆ Secure the cables with three zip ties. Carefully cut the excess; **avoid cutting the cables.**

KROK 29 Covering the xBuddy board



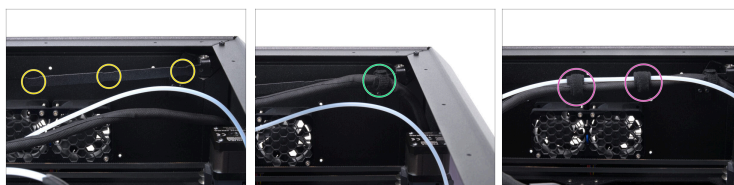
- ◆ Ostrożnie zakryj obudowę xBuddy, wsuwając najpierw wygiętą część pokrywy.
- ◆ Avoid pinching the cables, and make sure the cover is inserted perpendicular to the xBuddyboard.
- ◆ Przymocuj pokrywę obudowy xBuddy sześcioma śrubami M3x4rT.
- ◆ Wrap two zipties around the cable bundle on the top to keep the cables tidy and secured.
- 📌 Carefully cut the excess; avoid cutting the cables.

KROK 30 Covering the cables



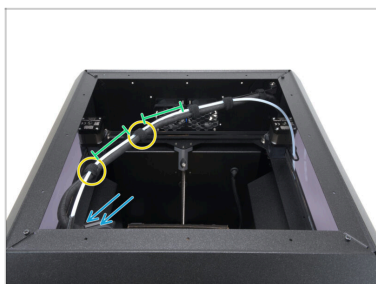
- ◆ Align the rear sheet metal cover so that the cables can run through the platform.
- ◆ Push the rear cable cover toward the printer, then move it upward.
- ◆ Ensure that the cable cover slides into the four openings in the printer rear cover.
- ◆ From the inside of the printer, secure the rear cover in place using two M3x4rT screws from inside the printer.

KROK 31 Attaching the cable ties I.



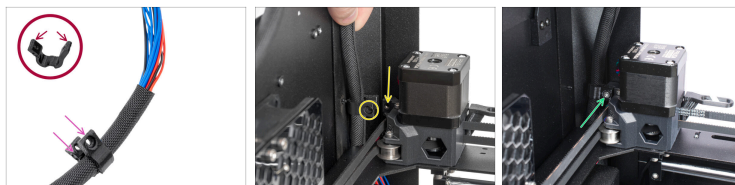
- ◆ Note the three ridges on the swing arm in the top rear right corner.
- ◆ Tightly wrap the cable tie around the furthest ridge. **Do not include the PTFE tube.**
- ◆ Add two more cable ties, ensuring that you **include the PTFE tube** as shown in the pictures.

KROK 32 Attaching the cable ties II.



- Move the Nextruder all the way to the front left corner to make sure that the main cable can reach all over the print area.
- Wrap the two remaining cable ties around the PTFE tube and main cable and tighten them.
- Leave a 10 cm (3.94 in) distance between the last two cable ties.

KROK 33 Attaching the main cable clip



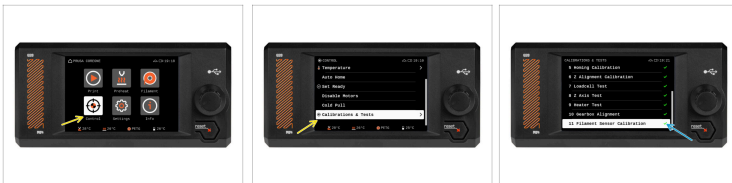
- i** We recommend adding the cable clip only once the new main cable is connected on both sides .
- Red hexagon icon** Carefully open the Main-cable-clip. **Be careful not to snap the part in half.**
- Purple hexagon icon** Wsuń wiązkę przewodów w klips.
- Yellow hexagon icon** Ensure the correct orientation of the Main-cable-clip. The side with the wider opening faces outward so the screw can be inserted.
- Green hexagon icon** Secure the Main-cable-clip in place with the M3x10 screw.

KROK 34 Włączenie drukarki



- ◆ Remove the box that is protecting the heatbed.
- ◆ Place the print sheet onto the heatbed. Align the rear cutout with the locking pins on the back of the heatbed.
- ◆ Connect the power cable and plug the printer into an outlet.
- ◆ Turn the print ON ("I" symbol).

KROK 35 Final check



- ◆ We recommend testing the printer to make sure that the main cable was replaced successfully.
- ◆ In the main menu, select **Control -> Calibrations & Tests** and run the self test.
- ◆ Follow the on-screen instructions until all tests pass with a green check mark.
- ◆ Congratulations, you have successfully replaced the main cable.
