

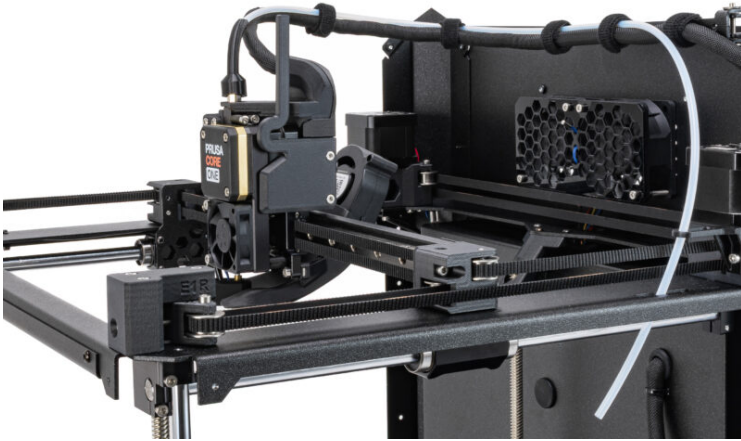
# Table of Contents

## How to replace the heatbed fans (CORE One L)

.....	3
Step 1 - Introduction .....	4
Step 2 - Tools necessary for this guide .....	4
Step 3 - Preparing the printer .....	5
Step 4 - Removing the zipties .....	6
Step 5 - Detaching the rear fan .....	7
Step 6 - Detaching the front fan .....	7
Step 7 - Removing the LED panel .....	8
Step 8 - Disconnecting the fan .....	9
Step 9 - Parts Preparation: Heatbed fan .....	10
Step 10 - Adding the bed fan mount .....	10
Step 11 - Connecting the new fan .....	11
Step 12 - Mounting the LED panel .....	12
Step 13 - Attaching the front fan .....	13
Step 14 - Attaching the rear fan .....	14
Step 15 - Securing the fan cables .....	15
Step 16 - Heatbed fans test .....	15
Step 17 - Well done .....	16
Step 18 - Give us feedback .....	17



# How to replace the heatbed fans (CORE One L)



[help.prusa3d.com/g1034298](https://help.prusa3d.com/g1034298)

Scan the QR code to  
display the latest  
version of this  
chapter.



## STEP 1 Introduction



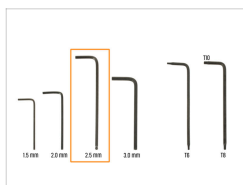
🛠️ This guide will take you through the **heatbed fan replacement** on your **Prusa CORE One L**.

🛒 All necessary parts are available in our eshop [prusa3d.com](https://prusa3d.com).

📌 Note that you have to be logged in to have access to the spare parts section.

---

## STEP 2 Tools necessary for this guide



🛒 **Please prepare tools for this guide:**

🛠️ 2.5mm Allen key

🔪 Flush cutters

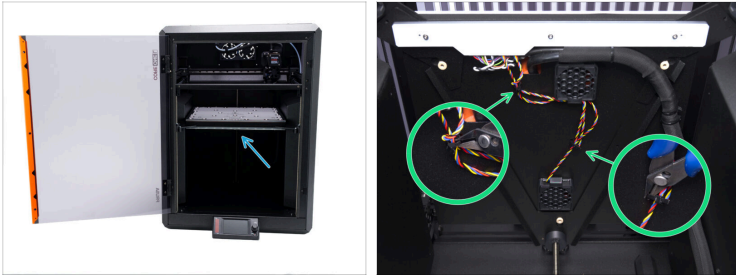
🔪 Zip tie (2x)

## STEP 3 Preparing the printer



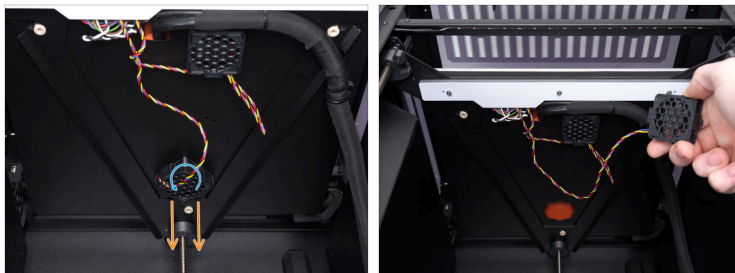
- ◆ Open the menu and select **Control -> Auto Home**.
- ◆ Wait until the heatbed moves into a position where you have good access to the heatbed fans.
- ⓘ Visually check which heatbed fan is not turning. If **both** heatbed fans are inoperational, contact our 24/7 customer support at [help.prusa3d.com](mailto:help.prusa3d.com).
- ◆ In case only one fan is inoperational, continue to the next step in this guide.
- ◆ From the rear side of the printer, unplug the PSU cable.
- ◆ Flip the power switch OFF (symbol "O").

## STEP 4 Removing the zipties



- ◆ Locate the two zip ties at the bottom of the heatbed.
- ◆ Use the flush cutters to cut the zipties.
- ⚠ **Be very careful not to damage any cables when cutting the zipties!**
- ⓘ Both zip ties have to be removed when replacing one of the fans.

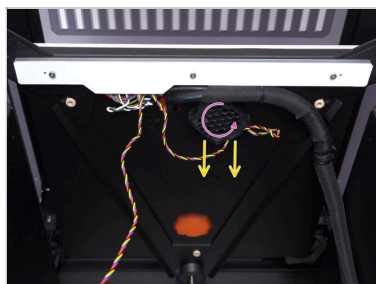
## STEP 5 Detaching the rear fan



- ◆ Carefully, yet firmly, turn the fan counterclockwise to unlock it.
- ◆ Pull the fan down gently to remove it from the heatbed.
- ◆ Leave the fan to hang. Be careful not to damage the fan cables.

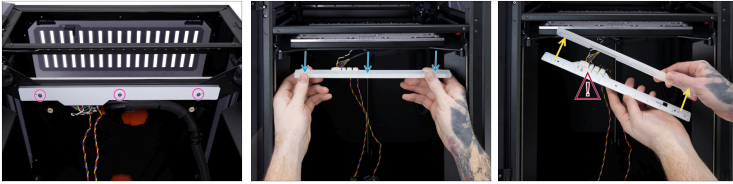
---

## STEP 6 Detaching the front fan



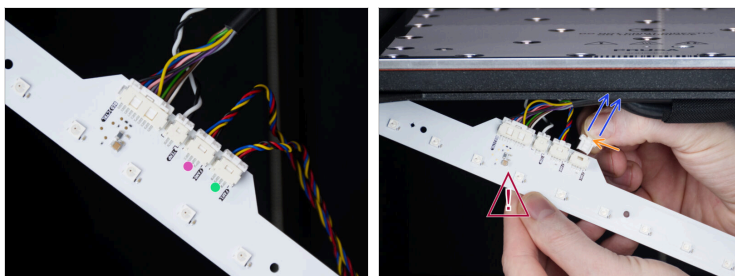
- ◆ Carefully, yet firmly, turn the fan counterclockwise to unlock it.
- ◆ Pull the fan down gently to remove it from the heatbed.
- ◆ Leave the fan to hang. Be careful not to damage the fan cables.

## STEP 7 Removing the LED panel



- ◆ Use the 2.5mm Allen key to remove the three M3x10 screw that hold the LED panel in place.
- ◆ Gently lower the LED panel. Note that the plastic cover is not fixed to the LED panel; hold it in place to prevent it from falling.
- ◆ Remove the cover from the LED panel.
- ⚠ **Do not touch LEDs and resistors on the LED panel!**

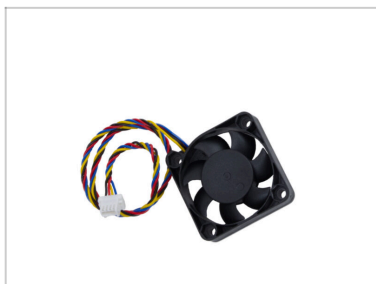
## STEP 8 Disconnecting the fan



- ◆ FAN 0 is in the front fan.
- ◆ FAN 1 is in the rear fan.
- ⚠ **Do not touch LEDs and resistors on the LED panel!**
- ⓘ Note that each connector is secured in place with a safety latch.
- ◆ Press the latch to disconnect the fan cable from the LED board.
- ◆ Pull the fan cable out of the LED board.
- ◆ Leave the LED panel to hang. Ensure that you do not damage or unplug any cables from the LED board.

---

## STEP 9 Parts Preparation: Heatbed fan



◆ For the following steps, please prepare:

- ◆ New heatbed fan (1x)

---

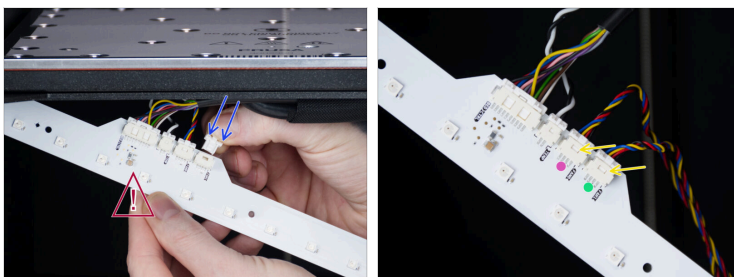
## STEP 10 Adding the bed fan mount







- ◆ Lead the cable through the opening in the Bed-fan-mount.
- ◆ Ensure that the cable is protruding from the opening next to the cable ridge.
- ◆ Push the heatbed fan into the Bed-fan-mount to secure it in place. **The sticker on the fan must face upwards.**

ⓘ If you are changing both fans, repeat this process for the other fan as well.

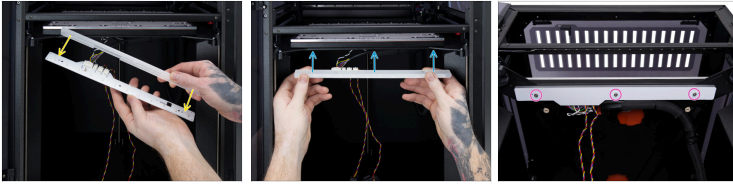
## STEP 11 Connecting the new fan



 **Do not touch LEDs and resistors on the LED panel!**

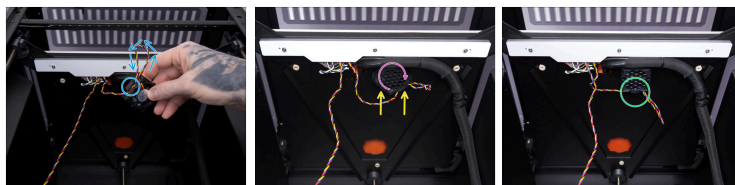
-  Plug the new fan into the connector on the LED board.
-  FAN 1 is in the rear fan.
-  FAN 0 is in the front fan.
-  Ensure that the **safety latch clicks into place** and holds the connector securely in position.

## STEP 12 Mounting the LED panel



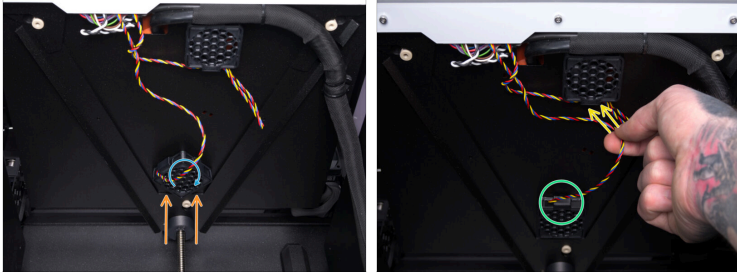
- Place the cover onto the LED panel. Ensure that it is positioned correctly and that the openings for screws align.
- Attach the LED panel with the cover to the heatedbed. Align the screw openings with the heatedbed.
- Insert three M3x10 screws into the LED panel. Use the 2.5mm Allen key to fix the LED panel in place.

## STEP 13 Attaching the front fan



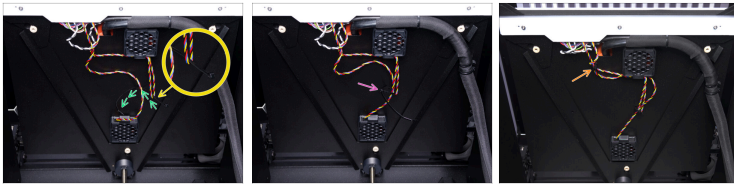
- ◆ Bend the front fan cable and push the cable into the ridge next to the cable opening in the Bed-fan-mount.
- ◆ Flip the fan so the side with the sticker is placed onto the bottom of the heatbed.
- ◆ Insert the Bed-fan-mount sideways into the heatbed. Make sure that the protrusions on the Bed-fan-mount fit into the heatbed.
- ◆ Once inserted, turn the Bed-fan-mount clockwise to secure it in place.
- ◆ The cable opening and the cable ridge on the Bed-fan-mount must be facing towards the back of the printer, as shown in the photo.

## STEP 14 Attaching the rear fan



- ✦ Insert the Bed-fan-mount sideways into the heatbed. Make sure that the protrusions on the Bed-fan-mount fit into the heatbed.
- ✦ Once inserted, turn the Bed-fan-mount clockwise to secure it in place.
- ✦ The cable opening and the cable ridge on the Bed-fan-mount must be facing towards the front of the printer, as shown in the photo.
- ✦ Take the rear fan cable and insert it into the cable ridge in the front Bed-fan-mount.

## STEP 15 Securing the fan cables



- ◆ Bend the tip of one zip tie and insert it through the opening in the middle of the heatbed.
- ◆ Thread the zip tie through the looped front fan cable.
- ◆ Connect both ends of the zip tie and tighten it to secure the cables in place.
- ◆ Add the other zip tie using the same process to secure the two fan cables in the front.

## STEP 16 Heatbed fans test



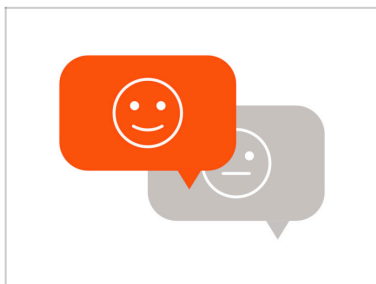
- ◆ Close the door.
- ◆ From the rear side of the printer, plug in the PSU cable.
- ◆ Flip the power switch ON (symbol "I").
- ◆ Open the menu and select **Control -> Calibration & Tests -> Fan Test**. The printer will then run a test of all fans.

## STEP 17 Well done



- ◆ Congratulations. You have successfully replaced the PRUSA CORE One L heatedbed fan!
- ◆ Happy printing.

## STEP 18 Give us feedback



- ◆ We know you are eager to start printing, but we would appreciate it if you could take 3–4 minutes to **share your thoughts** on this manual: how clear it was, how easy it was to follow, and any ideas to improve it.
- ⓘ This feedback is a little different from the usual comments you might leave on individual steps.
- ◆ **Share your feedback here.**
- ◆ Thank you for helping us make our manuals even better!



---

---

---

---

---

---

---

---

---

---



---

---

---

---

---

---

---

---

---

---



---

---

---

---

---

---

---

---

---

---

